

PART	BLOCK	PLAN	PART OF PIN	AREA M ²	PART	BLOCK	PLAN	PART OF PIN	AREA M ²	PART	BLOCK	PLAN	PART OF PIN	AREA M ²	PART	BLOCK	PLAN	PART OF PIN	AREA M ²	PART	BLOCK	PLAN	PART OF PIN	AREA M ²	PART	BLOCK	PLAN	PART OF PIN	AREA M ²	
1	BLOCK "J"	M-230	04700-0686	212.7	10	BLOCK "J"	M-230	04700-0686	102.9	19	BLOCK "J"	M-230	04700-0686	26.5	28	BLOCK "J"	M-230	04700-0686	5.6	37	BLOCK "J"	M-230	04700-0686	15.6	46	BLOCK "J"	M-230	04700-0686	5.6	
2				100.9	11				26.5	29				5.6	38				5.6	47				5.6						
3				100.9	12				2.7	30				11.2	39				16.6	48				5.6						
4				100.9	13				50.3	31				11.2	40				5.6	49				5.6						
5				100.9	14				43.9	32				5.6	41				5.6	50				5.6						
6				100.9	15				5.6	33				5.6	42				5.6	51				5.6						
7				100.9	16				5.6	34				5.6	43				5.6	52				8.7						
8				100.9	17				100.9	26				5.6	44				11.2	53				15.2						
9				102.9	18				204.2	27				5.6	36				5.6	45										

I REQUIRE THIS PLAN TO BE DEPOSITED UNDER THE LAND TITLES ACT.

JUNE 16, 2004

Paul A. Riddell
 PAUL A. RIDDELL
 ONTARIO LAND SURVEYOR

PLAN 4R-19520

RECEIVED AND DEPOSITED
 June 17 2004

L. Gingras
 L. GINGRAS Asst Dep
 LAND REGISTRAR FOR THE
 LAND TITLES DIVISION OF
 OTTAWA - CARLETON NO 4

PARTS 1 TO 53 ARE SUBJECT TO EASEMENT INST. OC257424.
 PARTS 22-53 ARE SUBJECT TO EASEMENT LT161720, LT161721 & LT161726.

PLAN OF SURVEY OF
 PART OF BLOCK "J"
 REGISTERED PLAN M-230
 CITY OF OTTAWA
 PAUL A. RIDDELL
 2004

SCALE 1:250
 0 5 10 15 METERS

METRIC
 DISTANCES SHOWN ON THIS PLAN ARE IN METRES AND CAN BE CONVERTED TO FEET BY DIVIDING BY 0.3048

LEGEND:
 ■ DENOTES FOUND MONUMENTS
 □ DENOTES SET MONUMENTS
 ▣ DENOTES IRON BAR
 SIB DENOTES STANDARD IRON BAR
 SSIB DENOTES SHORT STANDARD IRON BAR
 CC DENOTES CUT CROSS
 PL DENOTES PLAN AR-18830
 ⊕ DENOTES CENTRE LINE
 1236 DENOTES P.A. RIDDELL O.L.S.
 DENOTES R.W. ARNETT O.L.S.

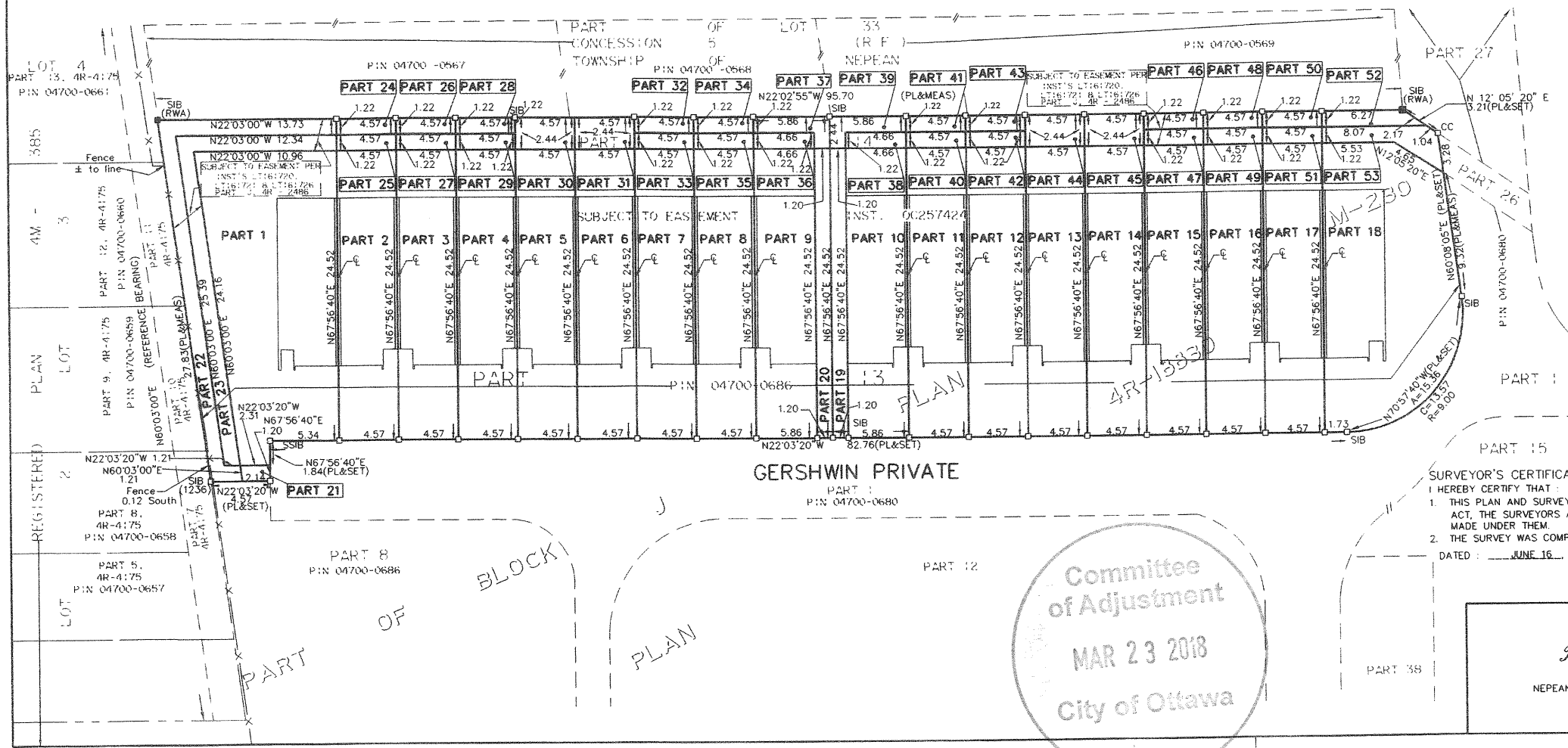
BEARING NOTE:
 BEARINGS ARE ASTRONOMIC AND ARE REFERRED TO THE MOTHERLY LIMIT OF BLOCK "J" AS SHOWN ON REGISTERED PLAN M-230 HAVING A BEARING OF N60°03'00"E.

NOTE:
 ALL SET MONUMENTS ARE IB'S UNLESS OTHERWISE NOTED.
 ALL DISTANCES ARE PLAN AND SET UNLESS OTHERWISE NOTED.

SURVEYOR'S CERTIFICATE:
 I HEREBY CERTIFY THAT:
 1. THIS PLAN AND SURVEY ARE CORRECT AND IN ACCORDANCE WITH THE SURVEYS ACT, THE SURVEYORS ACT AND THE LAND TITLES ACT AND THE REGULATIONS MADE UNDER THEM.
 2. THE SURVEY WAS COMPLETED ON THE 31 DAY OF MAY 2004.
 DATED: JUNE 16, 2004.

Paul A. Riddell
 PAUL A. RIDDELL
 ONTARIO LAND SURVEYOR

Paul A. Riddell Ltd.
 ONTARIO AND CANADA LAND SURVEYORS
 NEPEAN 1-613-225-8513 OTTAWA
 REF No. 03-1025
 email: priddell@magma.ca



Committee of Adjustment
 MAR 23 2018
 City of Ottawa