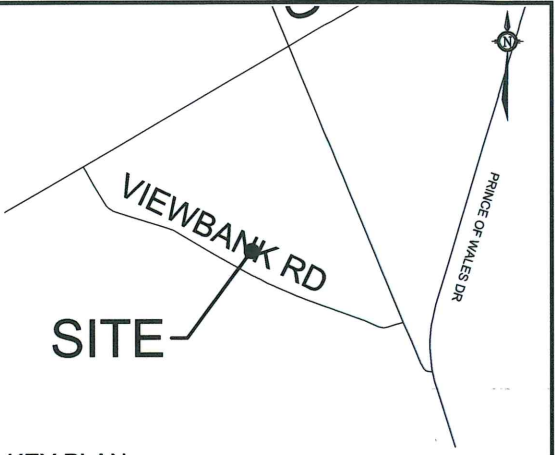
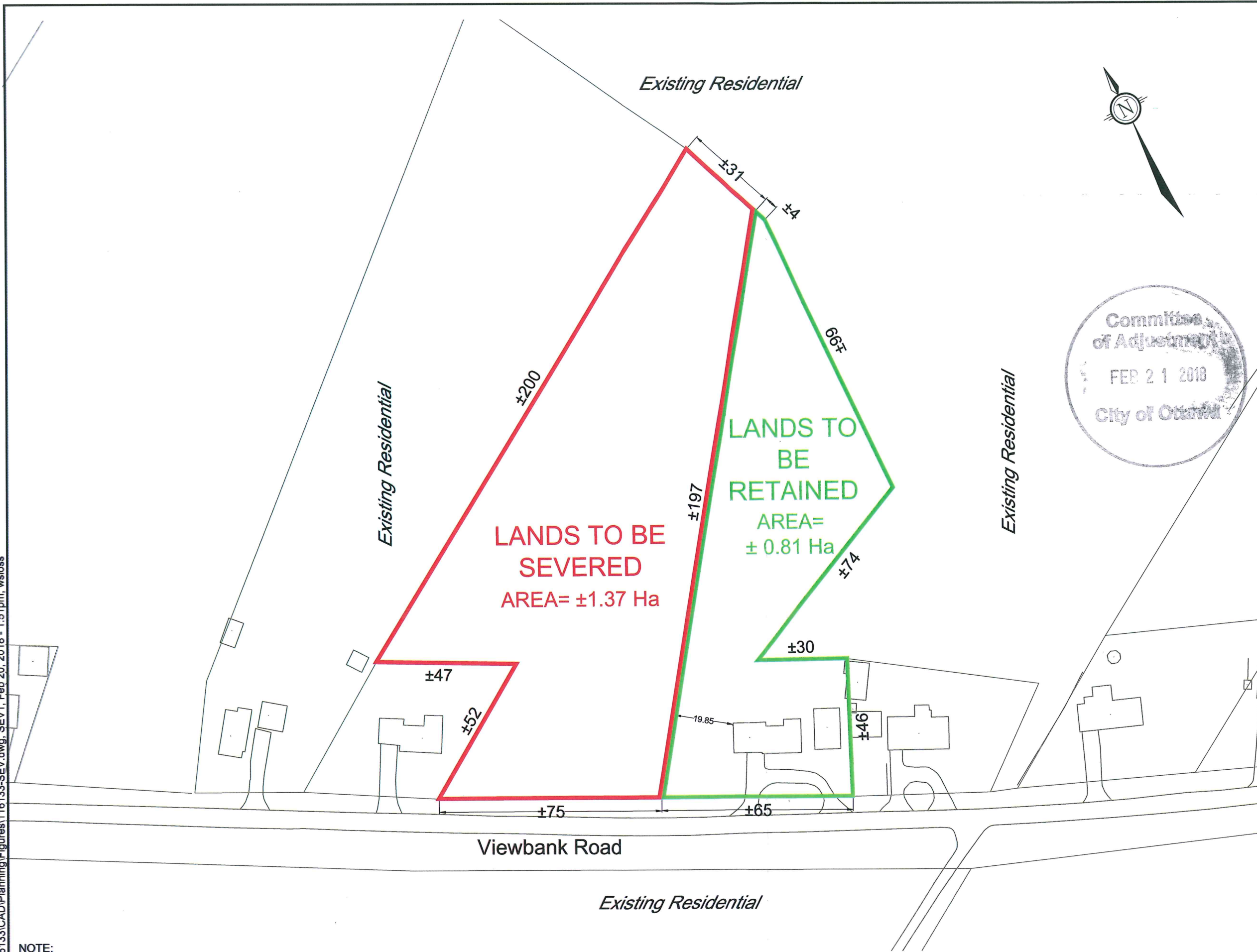


M:\2016\116133\CAD\Planning\Figures\116133-SEV.dwg, SEV1, Feb 20, 2018 - 1:51pm, wslloss



KEY PLAN
N.T.S.

SEVERANCE APPLICATION

4109 VIEWBANK ROAD

PART OF LOT 4, CONCESSION RF
Geographic Township of Rideau
CITY OF OTTAWA

1 : 1250

No.	REVISION	DATE	BY
1.	ISSUED FOR SEVERANCE APPLICATION	FEB 07/18	RP

NOVATECH
 Engineers, Planners & Landscape Architects
 Suite 200, 240 Michael Cowpland Drive
 Ottawa, Ontario, Canada K2M 1P6
 Telephone (613) 254-9643
 Facsimile (613) 254-5867
 Website www.novatech-eng.com

ISSUED
FEBRUARY, 2018
 PROJECT No.
116133
 DRAWING No.
116133-SEV

NOTE:
 THIS PLAN HAS BEEN COMPILED USING LEGAL INFORMATION OBTAINED FROM
 H.A.KEN SHIPMAN SURVEYING LTD., ONTARIO LAND SURVEYOR;
 PLAN OF SURVEY; JOB No. 17-11333.