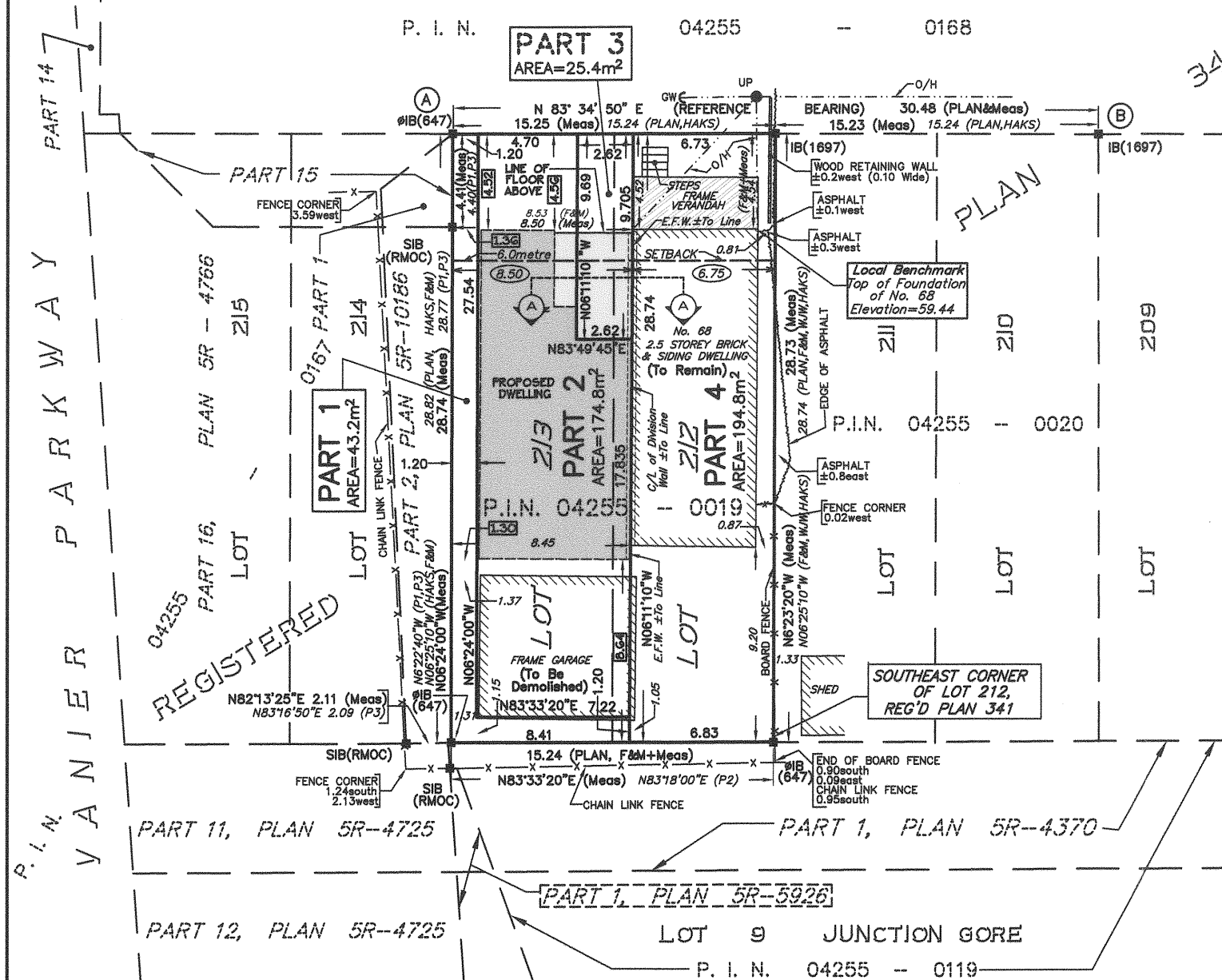


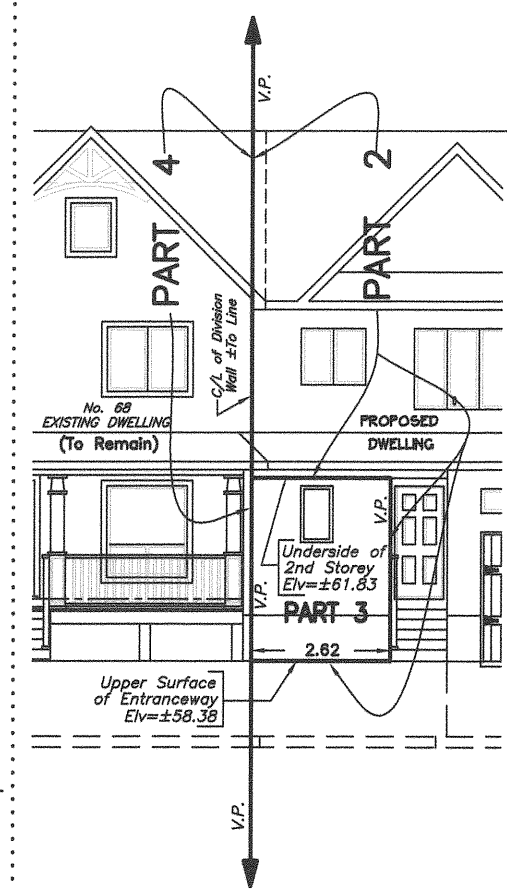
PRINCE ALBERT STREET

P. I. N. 04255 - 0168

PART 3
AREA=25.4m²



SECTION A-A
NOT TO SCALE



I REQUIRE THIS PLAN TO BE DEPOSITED UNDER THE LAND TITLES ACT.
DATE JULY 17, 2014
.....
RONALD A. DENIS
ONTARIO LAND SURVEYOR

PLAN 4R-
RECEIVED AND DEPOSITED
DATE 2014
.....
LAND REGISTRAR FOR THE
LAND TITLES DIVISION OF
OTTAWA-CARLETON No.4
**THIS IS A STRATA
PLAN OF SURVEY**

SCHEDULE

Part	Lot	Plan	P.I.N.
1,2&3	All of 213 & Part of 212	341	Part of 04255-0019
4	Part of 212		Part of 04255-0019

PARTS 1,2,3&4 - COMPRISE ALL OF P.I.N. 04255-0019

**PLAN OF SURVEY OF
LOTS 212 & 213
REGISTERED PLAN 341
CITY OF OTTAWA**

FARLEY, SMITH & DENIS SURVEYING LTD.
2014
SCALE = 1:200
0 2.0 4.0 6.0 8.0 10.0 12.0 14.0metres
DEC 12 2017
City of Ottawa

BEARING NOTE

BEARINGS ARE GRID AND ARE DERIVED FROM REFERENCE POINTS (A) AND (B) BY REAL TIME NETWORK OBSERVATIONS AND ARE REFERRED TO THE CENTRAL MERIDIAN 76°30'W LONGITUDE, MTM ZONE 9, N.A.D. 1983 (ORIGINAL).
DISTANCES ARE GROUND AND CAN BE CONVERTED TO GRID BY MULTIPLYING BY A COMBINED SCALE FACTOR OF 0.999965.

CO-ORDINATES WERE DERIVED FROM REAL TIME NETWORK OBSERVATIONS (SMARTNET) MTM ZONE 9, N.A.D. 1983 (ORIGINAL).

POINT ID	NORTHING	EASTING
(A)	XXXXX	XXXXX
(B)	XXXXX	XXXXX

CO-ORDINATES ARE MTM ZONE 9, N.A.D. 1983 (ORIGINAL), TO URBAN ACCURACY PER SEC. 14 (2) OF O.REG. 216/10, AND CANNOT, IN THEMSELVES, BE USED TO RE-ESTABLISH CORNERS OR BOUNDARIES SHOWN ON THIS PLAN.

SURVEYOR'S CERTIFICATE:
I certify that:
1. The structures shown on this plan are in existence.
2. The dimensions shown on this plan have been verified by actual measurements.
Date: JULY 17, 2014
.....
RONALD A. DENIS
Ontario Land Surveyor

SURVEYOR'S CERTIFICATE:
I certify that:
1. This survey and plan are correct and in accordance with the Surveys Act, the Surveyors Act, and the Land Titles Act and the regulations made under them.
2. The survey was completed on the XXth day of XX, 2014.
Date: JULY 17, 2014
.....
RONALD A. DENIS
Ontario Land Surveyor

FARLEY, SMITH & DENIS SURVEYING LTD.
ONTARIO LAND SURVEYORS
CANADA LANDS SURVEYORS
190 COLONNADE ROAD, OTTAWA, ONTARIO K2E 7J5
(613) 727-8226 FAX (613) 727-1823

METRIC NOTE: DISTANCES AND CO-ORDINATES SHOWN ON THIS PLAN ARE IN METRES AND CAN BE CONVERTED TO FEET BY DIVIDING BY 0.3048.
FILE No. : 429-12 INDEX : 3488

LEGEND

- SURVEY MONUMENT FOUND
- SURVEY MONUMENT SET
- SIB STANDARD IRON BAR
- SSIB SHORT STANDARD IRON BAR
- IB IRON BAR
- ⊙ ROUND MEASURED
- Meas FARLEY & MARTIN LTD., DATE: SEPT. 14/77
- 647/F&M FARLEY, SMITH & DENIS SURVEYING LTD.
- 1692/FSD WM. J. WEBSTER LTD., DATE: MAR. 12/82
- 1319/WJW H.A. KEN SHIPMAN SURVEYING LTD., DATE: MAY 12/00
- 1697/HAKS REGIONAL MUNICIPALITY OF OTTAWA CARLETON REGISTERED PLAN 341
- RMOC
- PLAN

- P1 PLAN 5R-4766
- P2 PLAN 5R-4370
- P3 PLAN 5R-10186
- x- FENCE
- ⊙ UP UTILITY POLE
- ⊙ GW GUY WIRE
- O/H OVERHEAD WIRES
- E.F.W. EXTERIOR FACE OF WALL
- ELV ELEVATION
- C/L CENTRELINE
- V.P. VIRTUAL PLANE
- (A) SECTION A-A

ELEVATION NOTE

- ELEVATIONS ARE GEODETIC.
- IT IS THE RESPONSIBILITY OF THE USER OF THIS INFORMATION TO VERIFY THAT THE JOB BENCHMARK HAS NOT BEEN ALTERED OR DISTURBED AND THAT ITS RELATIVE ELEVATION AND DESCRIPTION AGREES WITH THE INFORMATION SHOWN ON THIS DRAWING.