

SKETCH FOR
SEVERANCE APPLICATION OF
PART OF LOT 22
REGISTERED PLAN No. 23

GEOGRAPHIC TOWNSHIP OF GLOUCESTER
Formerly in the CITY OF GLOUCESTER, now in the
CITY OF OTTAWA

MARC P. PAYETTE, O.L.S.

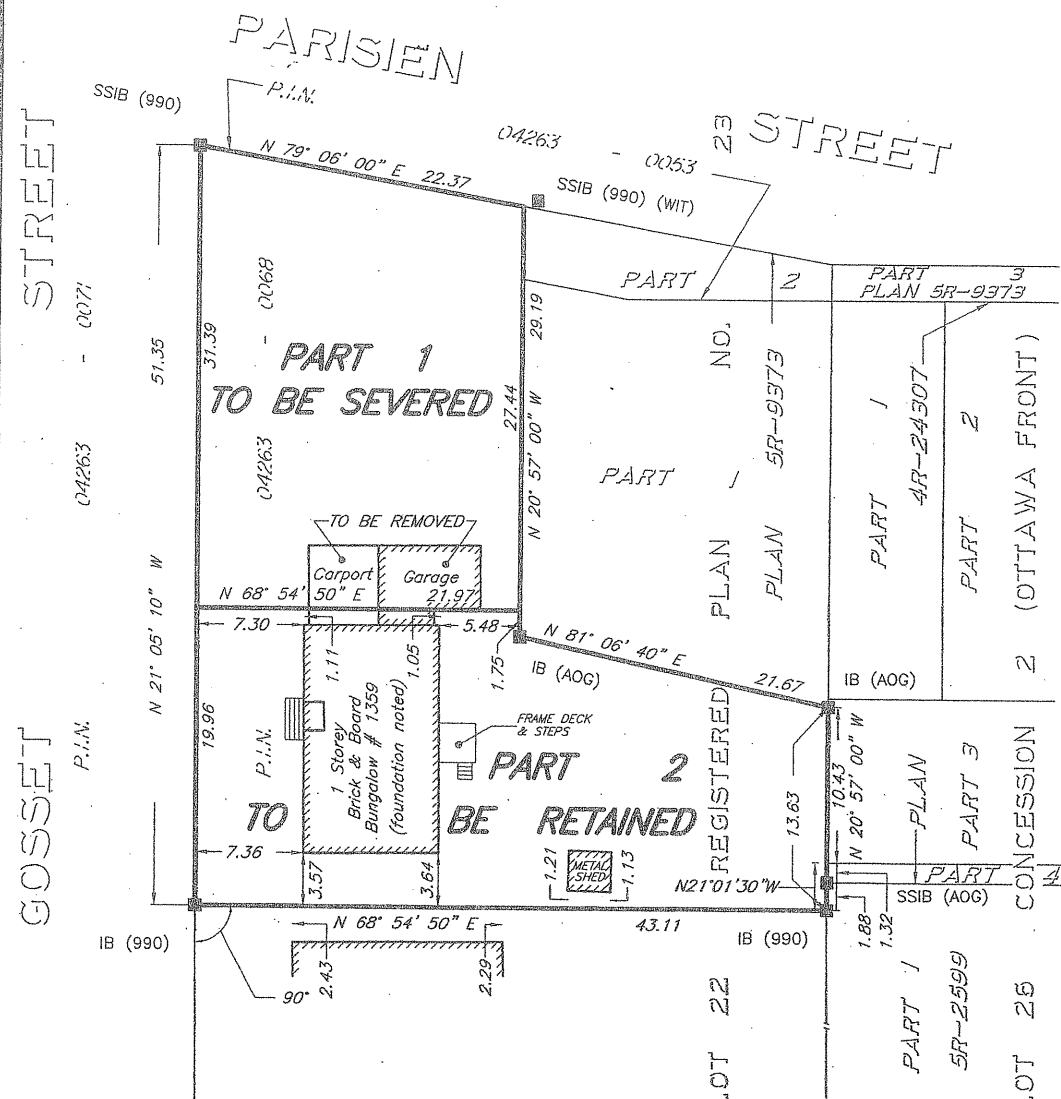
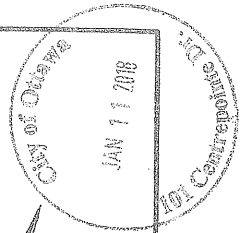
2017

SCALE 1 : 400



METRIC

DISTANCES SHOWN ON THIS PLAN ARE IN METRES AND
CAN BE CONVERTED TO FEET BY DIVIDING BY 0.3048.



<p><u>AREA & FRONTAGE OF PROPERTY TO BE SEVERED</u> AREA OF PART 1 = 647.4 square metres FRONTAGE = 30.31 metres @ 6 metres back.</p>
<p><u>AREA & FRONTAGE OF PROPERTY TO BE RETAINED</u> AREA OF PART 2 = 775.4 square metres FRONTAGE = 19.96 metres @ 6 metres back.</p>

<p><u>CLIENT</u> BUILDING & MAINTENANCE IND.</p>	<p><u>DATE</u> DECEMBER 14, 2017</p>
<p>ARPEMAGE PAYETTE SURVEYING I TEE A TD. ONTARIO LAND SURVEYORS ROCKLAND, ONTARIO (613) 446-5627</p>	
<p>REF. N° 16-049 RP</p>	