

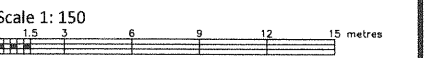
I REQUIRE THIS PLAN TO BE DEPOSITED UNDER THE LAND TITLES ACT.
 DATE: _____
 DANIEL ROBINSON
 ONTARIO LAND SURVEYOR

PLAN 4R-
 RECEIVED AND DEPOSITED
 DATE: _____
 REPRESENTATIVE FOR LAND REGISTRAR
 FOR THE LAND TITLES DIVISION OF
 OTTAWA-CARLETON NO. 4.

SCHEDULE

PART	LOT/BLOCK	CONCESSION/PLAN	PIN	AREA (Sq.m.)
1	PART OF BLOCK 321	REGISTERED PLAN 155898	ALL OF 04134 - 0087	256.0
2	PART OF LOT G	CONCESSION C (RIDEAU FRONT)	ALL OF 04134 - 0366	12.0

PLAN OF SURVEY OF
**PART OF BLOCK 321
 REGISTERED PLAN 155898 AND
 PART OF LOT G
 CONCESSION C (RIDEAU FRONT)**
 Geographic Township of Gloucester
 CITY OF OTTAWA
 FARLEY, SMITH & DENIS SURVEYING LTD. 2017



Metric Note
 Distances and coordinates on this plan are in metres and can be converted to feet by dividing by 0.3048.

Distance Note
 Distances shown on this plan are ground distances and can be converted to grid distances by multiplying by the combined scale factor of 0.99994.

Bearing Note
 Bearings are MTM grid, derived from the Can-Net (2016) Real Time Network GPS observations on reference points A and B, shown hereon, having a bearing of N 87° 27' 40" W and are referred to the Central Meridian of MTM Zone 9 (76° 30' West Longitude) Nad-83 (Original).

For bearing comparisons, a rotation of 0°41'15" counter-clockwise was applied to bearings on P1, P2 and P4.

CO-ORDINATES WERE DERIVED FROM CAN-NET (2016) REAL TIME NETWORK OBSERVATIONS, MTM ZONE 9, N.A.D. 1983 (ORIGINAL).

POINT ID	NORTHING	EASTING
⊕	5029908.60	367839.81
⊕	5029907.32	367868.92
01919680005	5027191.26	361496.76
01919680105	5024915.16	373971.65

CO-ORDINATES ARE MTM ZONE 9, N.A.D. 1983 (ORIGINAL), TO URBAN ACCURACY PER SEC. 14 (2) OF O. REG. 216/10, AND CANNOT, IN THEMSELVES, BE USED TO RE-ESTABLISH CORNERS OR BOUNDARIES SHOWN ON THIS PLAN.

Surveyor's Certificate

I certify that:

- This survey and plan are correct and in accordance with the Surveys Act, the Surveyors Act and the Land Titles Act and the Regulations made under them.
- The survey was completed on the ___ day of _____, 2017.

Date _____
 Daniel Robinson
 Ontario Land Surveyor

FARLEY, SMITH & DENIS SURVEYING LTD.

ONTARIO LAND SURVEYORS
 CANADA LAND SURVEYORS

190 COLONNADE ROAD, OTTAWA, ONTARIO K2E 7J5
 TEL. (613) 727-8226 FAX. (613) 727-1826



- Notes & Legend**
- Denotes Survey Monument Found
 - Survey Monument Planted
 - SSB Standard Iron Bar
 - SSIB Short Standard Iron Bar
 - IB Iron Bar
 - IBIB Round Iron Bar
 - Acc Accepted
 - (Wit) Witness
 - Meas Measured
 - (P1) Registered Plan 155898
 - (P2) Plan By (AOG) Dated September 9, 1992
 - (P3) Plan 5R-4202
 - (P4) Plan By (990) Dated October 23, 2014
 - (P5) Plan By (FSD) Dated February 10, 2017 (Ref. 17-17)
 - (N1) Notes By (725) Dated July 27, 1951
 - (D1) Inst. No. CR648144
 - OW— Overhead Wires
 - UP Utility Pole
 - AN Anchor
 - TRW Timber Retaining Wall
 - CRW Concrete Retaining Wall
 - EFW Exterior Face of Wall
 - C/L— Centreline
 - P.L.— Property Line