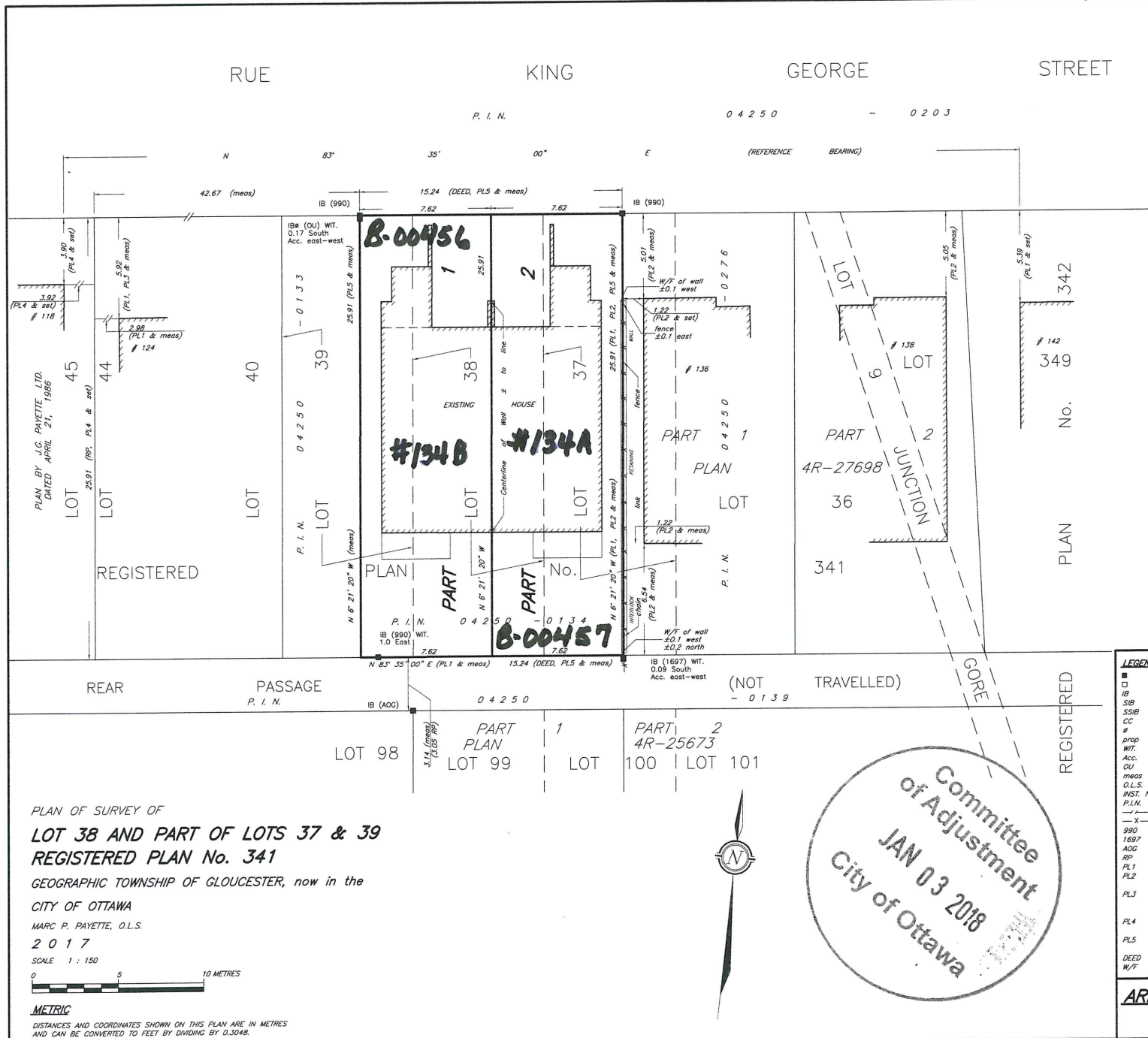


B-00456 & B-00457



I REQUIRE THIS PLAN TO BE DEPOSITED UNDER THE LAND TITLES ACT.

PLAN 4R- _____ RECEIVED AND DEPOSITED _____, 2012.

MARC P. PAYETTE ONTARIO LAND SURVEYOR

REPRESENTATIVE FOR THE LAND REGISTRAR LAND TITLES DIVISION OF OTTAWA-CARLETON NO. 4

SCHEDULE

| PART | LOT | PLAN | P.I.N. | AREA (square metres) |
|------|-------------------------|------|---------------------------|----------------------|
| 1 | PART OF 38 & PART OF 39 | 341 | PART OF P.I.N. 04250-0134 | 197.4 |
| 2 | PART OF 37 & PART OF 38 | | PART OF P.I.N. 04250-0134 | 197.4 |

PARTS 1 & 2 - ALL OF P.I.N. 04250-0134

NOTES

BEARING - BEARINGS ARE ASTROMOMIC AND ARE REFERRED TO THE SOUTHERLY LIMIT OF KING GEORGE STREET AS SHOWN ON PLAN 4R-27698, HAVING A BEARING OF N 83° 35' 00" E.

BEARING BETWEEN MONUMENTS POINT A AND POINT B IS GRID, HAVING A GRID BEARING OF N 00° 00' 00" E AS SHOWN ON THIS PLAN AND IS DERIVED FROM SIMULTANEOUS GPS OBSERVATIONS REFERRED TO THE ONTARIO COORDINATE SYSTEM, MTM NAD83 (ORIGINAL) ZONE 9.

DISTANCES SHOWN ON THIS PLAN ARE GROUND DISTANCES AND CAN BE CONVERTED TO GRID DISTANCES BY MULTIPLYING BY THE COMBINED SCALE FACTOR OF 0.99992279.

COORDINATES ARE IN METRES AND DERIVED FROM GPS OBSERVATIONS USING THE CAN-NET NETWORK AND REFERRED TO THE ONTARIO COORDINATE SYSTEM, MTM NAD83 (ORIGINAL) ZONE 9.

COORDINATES VALUES ARE TO URBAN ACCURACY IN ACCORDANCE WITH OREG 2167/10.

* POINT A - NORTHING 5000000.00, EASTING 300000.00

* POINT B - NORTHING 5000000.00, EASTING 300000.00

CAUTION - COORDINATES SHOWN ON THIS PLAN CANNOT IN THEMSELVES BE USED TO RE-ESTABLISH CORNERS OR BOUNDARIES.

- LEGEND**
- SURVEY MONUMENT FOUND
 - SURVEY MONUMENT SET
 - IB IRON BAR
 - SIB STANDARD IRON BAR
 - SSIB SHORT STANDARD IRON BAR
 - CC CUT CROSS
 - # ROUND OR DIAMETER
 - PROPD PROPORTIONED
 - WIT. WITNESS
 - Acc. ACCEPTED
 - OU ORIGIN UNKNOWN
 - MESD MEASURED
 - O.L.S. ONTARIO LAND SURVEYOR
 - INST. N° INSTRUMENT NUMBER
 - P.I.N. PROPERTY IDENTIFIER NUMBER
 - NOT TO SCALE
 - FENCING
 - 990 PAYETTE SURVEYING LTD.
 - 1697 J.P. SHIPMAN, O.L.S.
 - ADG ANNIS, O'SULLIVAN, VOLLEBEKK LTD.
 - RP REGISTERED PLAN No. 341
 - PL1 PLAN 4R-27698
 - PL2 PLAN BY H.A. KEN SHIPMAN SURVEYING LTD. DATED APRIL 8, 2017
 - PL3 PLAN BY FAIRHALL, MOFFATT & WOODLAND LIMITED DATED SEPTEMBER 16, 1986.
 - PL4 PLAN BY J.G. PAYETTE LTD. DATED APRIL 21, 1986
 - PL5 SKETCH BY J.D. BARNES LIMITED DATED AUGUST 21, 1975
 - DEED INST. No. NS155688
 - W/F WEST FACE

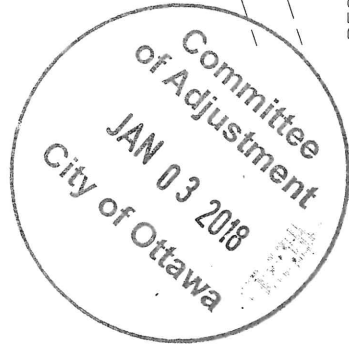
SURVEYOR'S CERTIFICATE

I CERTIFY THAT

- THIS SURVEY AND PLAN ARE CORRECT AND IN ACCORDANCE WITH THE SURVEYS ACT, THE SURVEYORS ACT, THE LAND TITLES ACT AND THE REGULATIONS MADE UNDER THEM.
- THE SURVEY WAS COMPLETED ON _____, 2012.

DATED: DECEMBER 14, 2012.

MARC P. PAYETTE ONTARIO LAND SURVEYOR



PLAN OF SURVEY OF
LOT 38 AND PART OF LOTS 37 & 39
 REGISTERED PLAN No. 341

GEOGRAPHIC TOWNSHIP OF GLOUCESTER, now in the
 CITY OF OTTAWA

MARC P. PAYETTE, O.L.S.
 2017



METRIC

DISTANCES AND COORDINATES SHOWN ON THIS PLAN ARE IN METRES AND CAN BE CONVERTED TO FEET BY DIVIDING BY 0.3048.

ARPENTAGE PAYETTE SURVEYING LTÉE./LTD.
 ONTARIO LAND SURVEYORS
 OTTAWA - ROCKLAND, ONTARIO REF. N° 16-012 RP