

Notes & Legend

- Denotes Survey Monument Planted (P1) - (1442) Plan dated June 4, 1956
- Survey Monument Found (P2) - (871) Plan dated May 2, 1938
- SIB Standard Iron Bar (P3) - Plan 4R-8504
- IB Iron Bar (P4) - (1287) Plan dated April 14, 1992
- (WIT) Witness (P1) - Inst. N723338
- (ADC) Annis, O'Sullivan, Vollebek Ltd. (P4) - Chain Link Fence
- Meas. Measured (P1) - Air Conditioner
- (P) Registered Plan 157

Scale 1 : 150

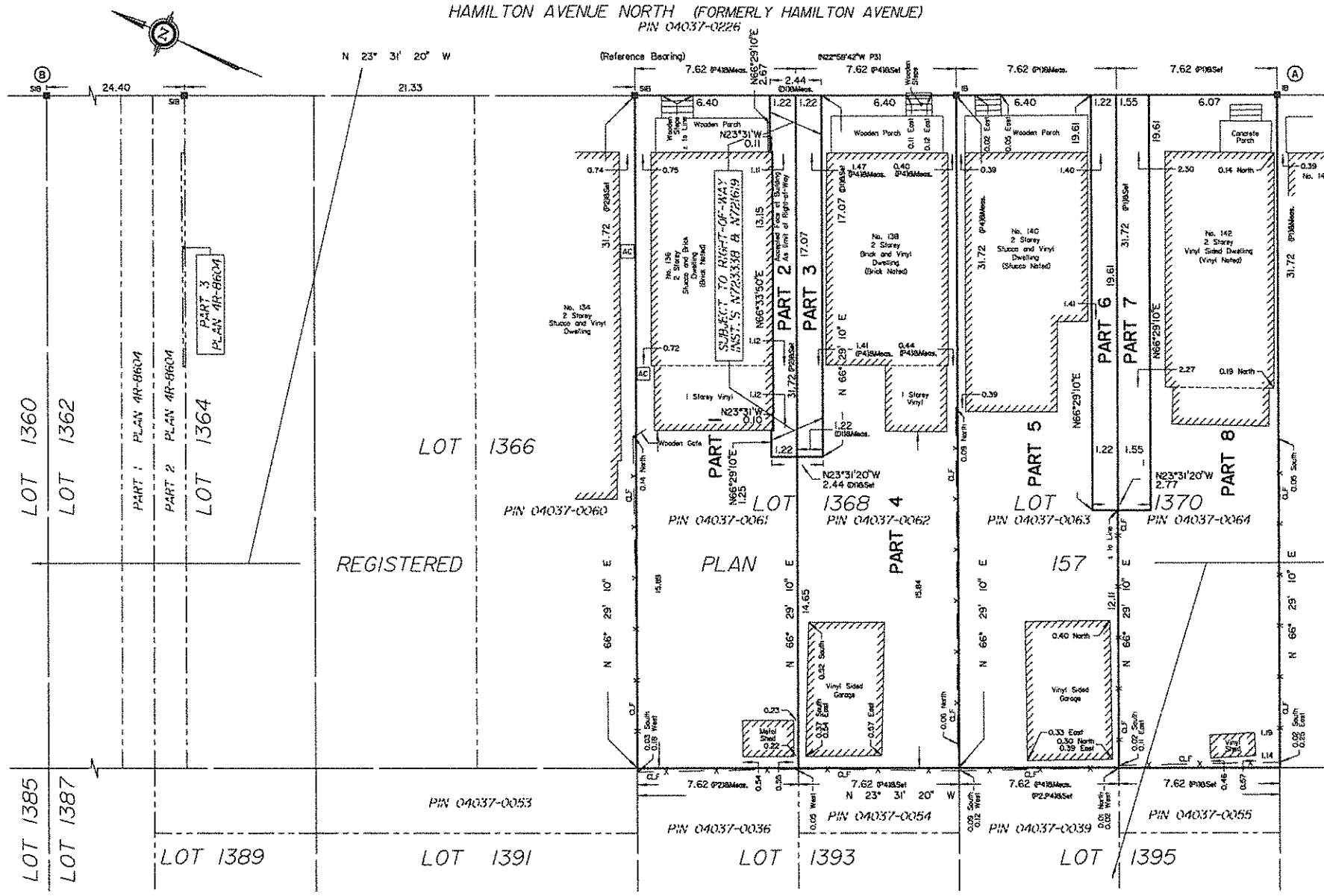
Metric
DISTANCES AND COORDINATES SHOWN ON THIS PLAN ARE IN METRES AND CAN BE CONVERTED TO FEET BY DIVIDING BY 0.3048.

I REQUIRE THIS PLAN TO BE DEPOSITED UNDER THE LAND TITLES ACT.
DATE: _____

PLAN 4R-
RECEIVED AND DEPOSITED DATE: _____

ANDRÉ ROY
ONTARIO LAND SURVEYOR

REPRESENTATIVE FOR LAND REGISTRAR FOR THE LAND TITLES DIVISION OF OTTAWA-CARLETON NO. 4.



SCHEDULE

AREA (Sq. m.)	PART	LOT	PLAN	PIN
241.7	1,2	ALL OF 1368	157	ALL OF PIN 04037-0061
241.7	3,4	ALL OF 1368		ALL OF PIN 04037-0062
241.7	5,6	ALL OF 1370		ALL OF PIN 04037-0063
241.7	7,8	ALL OF 1370		ALL OF PIN 04037-0064

Parts 2 and 3 are subject to easement Inst.'s N723338 and N721619.

DRAFT PLAN OF SURVEY OF
LOTS 1368 AND 1370
REGISTERED PLAN 157
CITY OF OTTAWA
Surveyed by Annis, O'Sullivan, Vollebek Ltd.

Surveyor's Certificate

I hereby certify that this survey and plan are correct and in accordance with the Surveys and Land Titles Act and the regulations made thereunder.

The survey was completed on the 27th day of June, 2017.

André Roy
Ontario Land Surveyor

Committee of Adjustment
DEC 22 2017
City of Ottawa

Distances shown on this plan are ground distances and can be converted to grid distances by multiplying by the combined scale factor of 0.9999xx

Bearings are grid, derived from Can-Net 2016 Real Time Network GPS observations referenced to Specified Control Points A and B, shown hereon, having a bearing of N23°31'20"W and are referenced to Specified Control Points 0191968005 and 01919680105, MTM Zone 9 (76°30' West Longitude) NAD-83 (original).

Coordinates are derived from Can-Net 2016 Real Time Network GPS observations referenced to Specified Control Points 0191968005 and 01919680105, MTM Zone 9 (76°30' West Longitude) NAD-83 (original).

Coordinate values are to urban accuracy in accordance with O. Reg. 216/10.

01919680005	Northing	5027191.26	Easting	361496.76
01919680105	Northing	5024915.16	Easting	373971.65
Point A	Northing	5028871.90	Easting	365224.73
Point B	Northing	5028941.77	Easting	365194.30

Caution: Coordinates cannot, in themselves, be used to re-establish corners or boundaries shown on this plan

ANNIS, O'SULLIVAN, VOLLEBEK LTD.
14 Concourse Gate, Suite 500
Napier, Ont. K2E 7S6
Phone: (613) 727-0850 / Fax: (613) 727-1079
Email: kcopland@annis.com

Ontario Land Surveyors
Reg. No. 19209-17, 19209-18, 19209-19, 19209-20, 19209-21, 19209-22, 19209-23, 19209-24, 19209-25, 19209-26, 19209-27, 19209-28, 19209-29, 19209-30, 19209-31, 19209-32, 19209-33, 19209-34, 19209-35, 19209-36, 19209-37, 19209-38, 19209-39, 19209-40, 19209-41, 19209-42, 19209-43, 19209-44, 19209-45, 19209-46, 19209-47, 19209-48, 19209-49, 19209-50, 19209-51, 19209-52, 19209-53, 19209-54, 19209-55, 19209-56, 19209-57, 19209-58, 19209-59, 19209-60, 19209-61, 19209-62, 19209-63, 19209-64, 19209-65, 19209-66, 19209-67, 19209-68, 19209-69, 19209-70, 19209-71, 19209-72, 19209-73, 19209-74, 19209-75, 19209-76, 19209-77, 19209-78, 19209-79, 19209-80, 19209-81, 19209-82, 19209-83, 19209-84, 19209-85, 19209-86, 19209-87, 19209-88, 19209-89, 19209-90, 19209-91, 19209-92, 19209-93, 19209-94, 19209-95, 19209-96, 19209-97, 19209-98, 19209-99, 19209-100.

ANNIS, O'SULLIVAN, VOLLEBEK LTD. 19209-17, 19209-18, 19209-19, 19209-20, 19209-21, 19209-22, 19209-23, 19209-24, 19209-25, 19209-26, 19209-27, 19209-28, 19209-29, 19209-30, 19209-31, 19209-32, 19209-33, 19209-34, 19209-35, 19209-36, 19209-37, 19209-38, 19209-39, 19209-40, 19209-41, 19209-42, 19209-43, 19209-44, 19209-45, 19209-46, 19209-47, 19209-48, 19209-49, 19209-50, 19209-51, 19209-52, 19209-53, 19209-54, 19209-55, 19209-56, 19209-57, 19209-58, 19209-59, 19209-60, 19209-61, 19209-62, 19209-63, 19209-64, 19209-65, 19209-66, 19209-67, 19209-68, 19209-69, 19209-70, 19209-71, 19209-72, 19209-73, 19209-74, 19209-75, 19209-76, 19209-77, 19209-78, 19209-79, 19209-80, 19209-81, 19209-82, 19209-83, 19209-84, 19209-85, 19209-86, 19209-87, 19209-88, 19209-89, 19209-90, 19209-91, 19209-92, 19209-93, 19209-94, 19209-95, 19209-96, 19209-97, 19209-98, 19209-99, 19209-100.