

I REQUIRE THIS PLAN TO BE DEPOSITED UNDER THE LAND TITLES ACT.
 DATE: _____

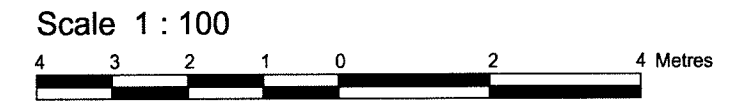
PLAN 4R-
 RECEIVED AND DEPOSITED
 DATE: _____

--- V. ANDREW SHELPEL ---
 ONTARIO LAND SURVEYOR

--- REPRESENTATIVE FOR LAND REGISTRAR FOR THE LAND TITLES DIVISION OF OTTAWA-CARLETON NO. 4. ---

SCHEDULE				
AREA (Sq.m.)	PART	LOT	PLAN	PIN
210.46	1	PART OF 723	4M-52	PART OF 04033-0108
210.43	2	PART OF 723 & 724		

DRAFT PLAN OF SURVEY OF
LOT 723 AND PART OF LOT 724
REGISTERED PLAN 4M-52
CITY OF OTTAWA
 Surveyed by Annis, O'Sullivan, Vollebek Ltd.



Metric
 DISTANCES SHOWN ON THIS PLAN ARE IN METRES AND CAN BE CONVERTED TO FEET BY DIVIDING BY 0.3048

Surveyor's Certificate
 I CERTIFY THAT :

- This survey and plan are correct and in accordance with the Surveys Act, the Surveyors Act and the Land Titles Act and the regulations made under them.
- The survey was completed on the ___ day of December, ____.

 Date

 V. Andrew Shelpel
 Ontario Land Surveyor

- Notes & Legend**
- Denotes Survey Monument Planted
 - Survey Monument Found
 - SIB Standard Iron Bar
 - CC Cut Cross
 - IB Iron Bar
 - 0.3m Long Survey Monument
 - CP Concrete Pin
 - (WIT) Witness
 - (AOG) Annis, O'Sullivan, Vollebek Ltd.
 - Meas. Measured
 - (P1) Registered Plan 4M-52
 - (P2) (AOG) Plan Dated December 3, 2015
 - (P3) (AOG) Plan Dated September 30, 2016
 - BF Board Fence
 - C/L Centreline
 - Fdn. Foundation
 - WTL Centerline of Wall ± to Line

Distances shown on this plan are ground distances and can be converted to grid distances by multiplying by the combined scale factor of 0.9999xx.

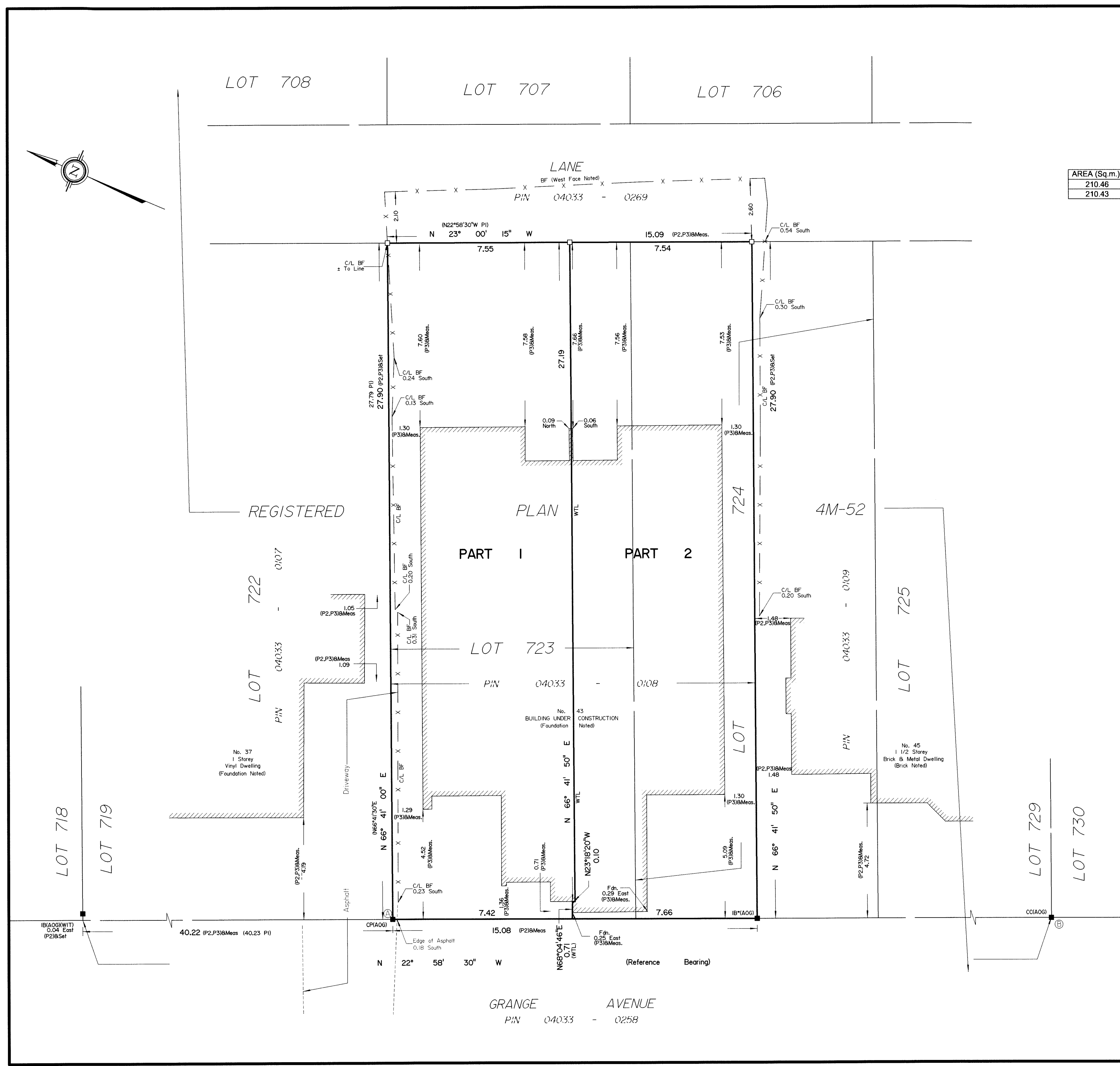
Bearings are grid, derived from Can-Net 2016 Real Time Network GPS observations on reference points A and B, shown hereon, having a bearing of N22°58'30"W and are referenced to Specified Control Points 01919680005 and 01919680105, MTM Zone 9 (76°30' West Longitude) NAD-83 (original).

Coordinates are derived from Can-Net 2016 Real Time Network GPS observations referenced to Specified Control Points 01919680005 and 01919680105, MTM Zone 9 (76°30' West Longitude) NAD-83 (original).

Coordinate values are to urban accuracy in accordance with O. Reg. 216/10.

.01919680005	Northing	5027191.26	Easting	361496.76
.01919680105	Northing	5024915.16	Easting	373971.65
.Point A	Northing		Easting	
.Point B	Northing		Easting	

Caution: Coordinates cannot, in themselves, be used to re-establish corners or boundaries shown on this plan.



ANNIS, O'SULLIVAN, VOLLEBEK LTD.
 14 Concourse Gate, Suite 500
 Nepean, Ont. K2E 7S6
 Phone: (613) 727-0850 / Fax: (613) 727-1079
 Email: Nepean@annisovl.com

Ontario Land Surveyors Job No. 18520-17 L1723P1.1724 4M-52 R DI AE