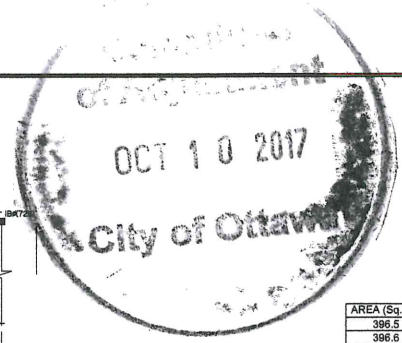


B-00351



I REQUIRE THIS PLAN TO BE DEPOSITED UNDER THE LAND TITLES ACT.  
 DATE: \_\_\_\_\_  
 RICHARD R. GAUTHIER  
 ONTARIO LAND SURVEYOR  
 REPRESENTATIVE FOR LAND REGISTRAR FOR THE LAND TITLES DIVISION OF OTTAWA-CARLETON NO. 4.

SCHEDULE				
AREA (Sq.m)	PART	LOT	PLAN	PIN
396.5	1	PART OF 28	129	PART OF 04193-0061
396.6	2	AND 29		

**DRAFT PLAN OF SURVEY OF PART OF LOTS 28 AND 29 REGISTERED PLAN 129 CITY OF OTTAWA**  
 Surveyed by Annis, O'Sullivan, Vollebek Ltd.



**Metric**  
 DISTANCES AND COORDINATES SHOWN ON THIS PLAN ARE IN METRES AND CAN BE CONVERTED TO FEET BY DIVIDING BY 0.3048.

**Surveyor's Certificate**  
 I CERTIFY THAT:  
 1. This survey and plan are correct and in accordance with the Surveys Act, the Surveyors Act and the Land Titles Act and the regulations made under them.  
 2. The survey was completed on the 1st day of June, 2017.

Date: \_\_\_\_\_  
 Richard R. Gauthier  
 Ontario Land Surveyor

**Notes & Legend**

- Denotes Survey Monument Planned
- Survey Monument Found
- S— Short Standard Iron Bar
- IP— Iron Pipe
- IB— Iron Bar
- IBR— Round Iron Bar
- IB\*— Iron Bar (0.3m Long)
- N&W— Nail & Washer
- (WT)— Witness
- (AOG)— Annis, O'Sullivan, Vollebek Ltd.
- Meas.— Measured
- (P1)— Registered Plan 129
- (P2)— (AOG) Plan dated March 22, 2017
- (P3)— (AOG) Notes September 2, 2014
- (P4)— (AOG) Notes September 27, 1982
- (D1)— Inst. N718225
- CLF— Chain Link Fence
- BF— Board Fence
- WRW— Wood Retaining Wall
- SRW— Stone Retaining Wall

Distances shown on this plan are ground distances and can be converted to grid distances by multiplying by the combined scale factor of 0.99994.

Bearings are grid, derived from Can-Net 2016 Real Time Network GPS observations on reference points A and B, shown hereon, having a bearing of N83°50'10"E and are referenced to Specified Control Points 01919680105 and 01919643761, MTM Zone 9 (76°30' West Longitude) NAD-83 (original).

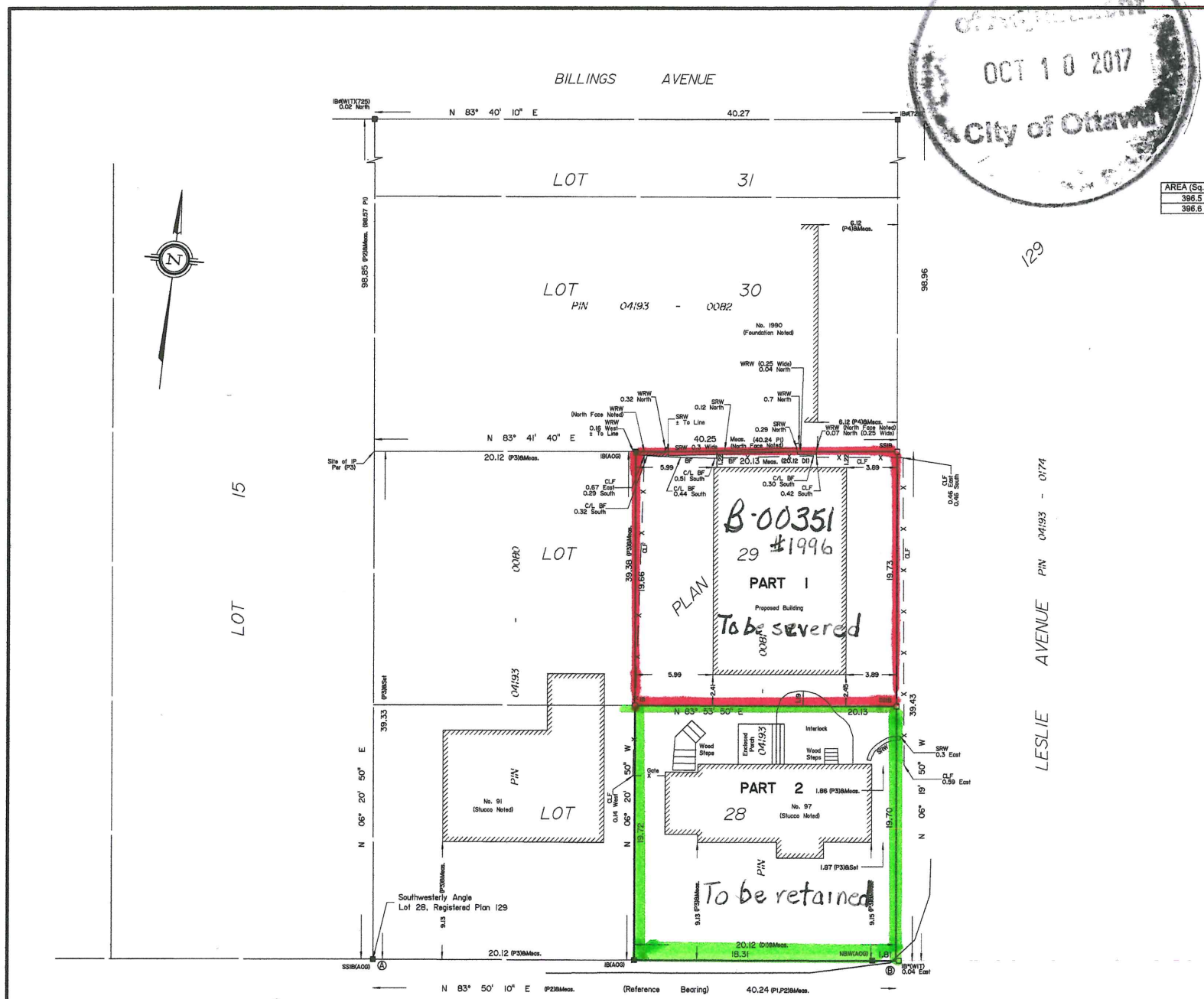
Coordinates are derived from Can-Net 2016 Real Time Network GPS observations referenced to Specified Control Points 01919680105 and 019643761, MTM Zone 9 (76°30' West Longitude) NAD-83 (original).

Coordinate values are to urban accuracy in accordance with O. Reg. 216/10.

.01919680105	Northing	5024915.16	Eastings	373971.65
.01919643761	Northing	5036178.12	Eastings	372436.11
.Point A	Northing	5028435.43	Eastings	369732.62
.Point B	Northing	5028439.76	Eastings	369772.66

Caution: Coordinates shown, in themselves, be used to re-establish corners or boundaries without this plan.

**ANNIS, O'SULLIVAN, VOLLEBEK LTD.**  
 14 Concourse Gate, Suite 500  
 Niagara, Ont. N2E 7S6  
 Phone: (613) 727-0850 / Fax: (613) 727-1079  
 Email: Newsum@annisd.com



PLEASANT PARK ROAD (Formerly Stanley Avenue)  
 PIN 04193 - 0066

REGISTERED