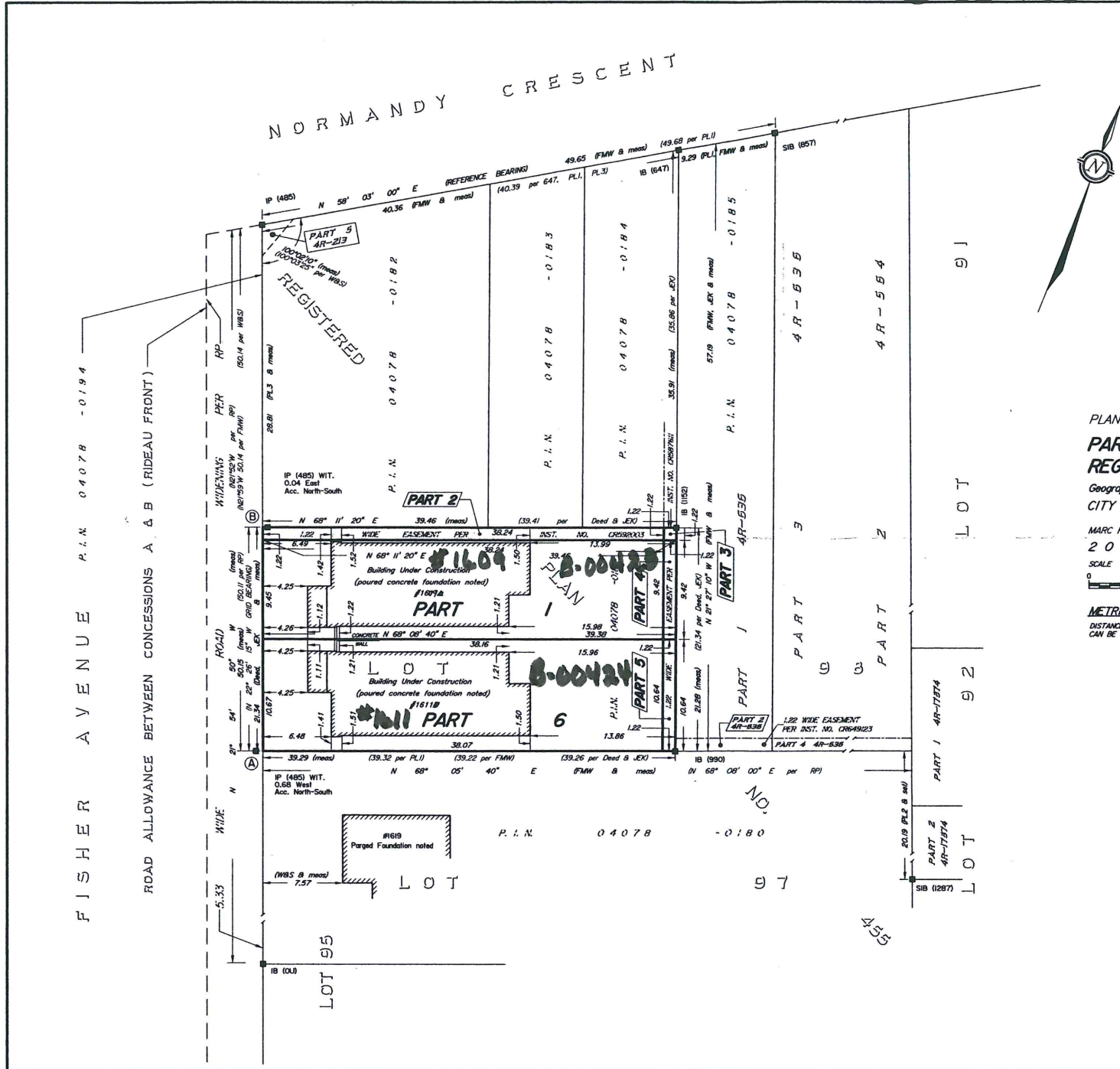


B-00423-00424



I REQUIRE THIS PLAN TO BE DEPOSITED UNDER THE LAND TITLES ACT.

PLAN 4R- _____
RECEIVED AND DEPOSITED _____, 2016.

MARC P. PAYETTE
ONTARIO LAND SURVEYOR

REPRESENTATIVE FOR THE LAND REGISTRAR
LAND TITLES DIVISION OF
OTTAWA-CARLETON NO. 4

SCHEDULE

PART	LOT	PLAN	P.I.N.	AREA (square metres)
1				360.4
2				46.7
3	PART OF 98	455	PART OF 04078-0181	1.5
4				11.5
5				13.0
6				406.1

PARTS 1 TO 6 - ALL OF P.I.N. 04078-0181
PARTS 2 & 3 - SUBJECT TO EASEMENT PER INST. N° CR592003
PARTS 3, 4 & 5 - SUBJECT TO EASEMENT PER INST. N° CR587611

PLAN OF SURVEY OF
PART OF LOT 98
REGISTERED PLAN No. 455
Geographic TOWNSHIP OF NEPEAN, now in the CITY OF OTTAWA

MARC P. PAYETTE, O.L.S.
2016
SCALE 1 : 250

METRIC
DISTANCES SHOWN ON THIS PLAN ARE IN METRES AND CAN BE CONVERTED TO FEET BY DIVIDING BY 0.3048.

NOTES

BEARING-BEARINGS ARE ASTROMOMIC AND ARE REFERRED TO THE SOUTHERLY LIMIT OF NORMANDY CRESCENT, AS SHOWN ON REGISTERED PLAN NO. 455, HAVING A BEARING OF N 58° 03' 00" E.

BEARING BETWEEN MONUMENTS POINT A AND POINT B IS GRID, HAVING A GRID BEARING OF N 25° 28' 15" W AS SHOWN ON THIS PLAN AND IS DERIVED FROM SIMULTANEOUS GPS OBSERVATIONS, REFERRED TO THE ONTARIO COORDINATE SYSTEM, NAD83 (ORIGINAL) ZONE 9.

DISTANCES SHOWN ON THIS PLAN ARE GROUND DISTANCES AND CAN BE CONVERTED TO GRID DISTANCES BY MULTIPLYING BY THE COMBINED SCALE FACTOR OF 0.99983403.

COORDINATES ARE IN METRES AND DERIVED FROM GPS OBSERVATIONS USING THE CAN-NET NETWORK AND REFERRED TO THE ONTARIO COORDINATE SYSTEM, NAD83 (ORIGINAL) ZONE 9.

COORDINATES VALUES ARE TO URBAN ACCURACY IN ACCORDANCE WITH O.Reg. 216/10.

* POINT A-NORTHING 5024734.31, EASTING 366723.29
* POINT B-NORTHING 5024754.04, EASTING 366715.14

CAUTION-COORDINATES SHOWN ON THIS PLAN CANNOT IN THEMSELVES BE USED TO RE-ESTABLISH CORNERS OR BOUNDARIES.

LEGEND

- SURVEY MONUMENT FOUND
- SURVEY MONUMENT SET
- IB IRON BAR
- SIB STANDARD IRON BAR
- SSIB SHORT STANDARD IRON BAR
- CC CUT CROSS
- # ROUND OR DIAMETER
- PROP PROPORTIONED
- WIT WITNESS
- Acc. ACCEPTED
- OU ORIGIN UNKNOWN
- meas MEASURED
- O.L.S. ONTARIO LAND SURVEYOR
- INST. N° INSTRUMENT NUMBER
- P.I.N. PROPERTY IDENTIFIER NUMBER
- NOT TO SCALE
- X- FENCING
- 990 PAYETTE SURVEYING LTD.
- 485 W.L. CASSELS, O.L.S.
- 647 H.R. FARLEY, O.L.S.
- 857/FMW PLAN BY FAIRHALL, MOFFATT & WOODLAND LIMITED
- 1152/AEX PLAN BY J. ERIC KIM, O.L.S.
- 1287 FARLEY, SMITH & DENIS LTD.
- 1318/WBS PLAN BY HERSTER & SIMMONS LTD., DATED OCTOBER 28, 1989
- Dead INST. No. CR583605
- RP REGISTERED PLAN No. 455
- PL1 PLAN 4R-6336
- PL2 PLAN 4R-17874
- PL3 PLAN ATTACHED TO INST. No. CR592003

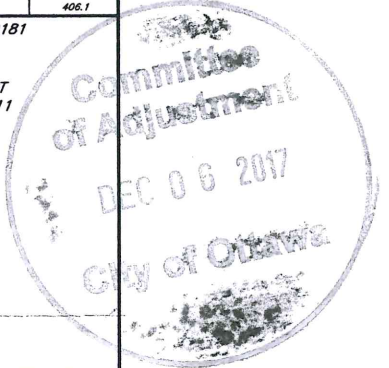
SURVEYOR'S CERTIFICATE

I CERTIFY THAT

- THIS SURVEY AND PLAN ARE CORRECT AND IN ACCORDANCE WITH THE SURVEYS ACT, THE SURVEYORS ACT, THE LAND TITLES ACT AND THE REGULATIONS MADE UNDER THEM.
- THE SURVEY WAS COMPLETED ON SEPTEMBER 27, 2016.

DATED: SEPTEMBER 28, 2016.

Marc Payette
MARC P. PAYETTE
ONTARIO LAND SURVEYOR



ARPENTAGE PAYETTE SURVEYING LTÉE./LTD.
ONTARIO LAND SURVEYORS
OTTAWA - ROCKLAND, ONTARIO
REF. N° 13-002C