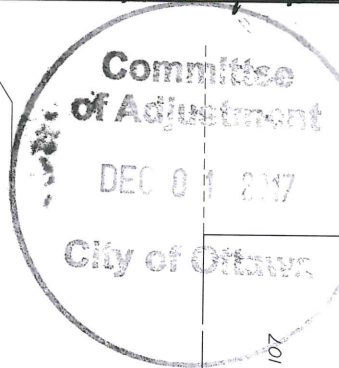


B-00414 & B-00415



I REQUIRE THIS PLAN TO BE DEPOSITED UNDER THE LAND TITLES ACT.
 DATE: _____
 GORDON A. RAY
 ONTARIO LAND SURVEYOR
 REPRESENTATIVE FOR THE LAND REGISTRAR LAND TITLES DIVISION OF OTTAWA-CARLETON NO.4

SCHEDULE

PART	LOT	PLAN	PIN
1	PART OF 148	19	ALL OF 14502-0016
2			

PLAN OF SURVEY OF
 PART OF LOT 148
 REGISTERED PLAN 19
 CITY OF OTTAWA

Surveyed by Annis, O'Sullivan, Vollebek Ltd.
 Scale 1: 300

Metric
 DISTANCES AND COORDINATES SHOWN ON THIS PLAN ARE IN METRES AND CAN BE CONVERTED TO FEET BY DIVIDING BY 0.3048.

Surveyor's Certificate
 I CERTIFY THAT:
 1. This survey and plan are correct and in accordance with the Surveys Act, the Surveyors Act, the Land Titles Act and the regulations made under them.
 2. The survey was completed on October 4, 2017.

Date: _____
 Gordon A. Ray
 Ontario Land Surveyor

- Notes & Legend
- Denotes Survey Monument Planted
 - Survey Monument Found
 - SIB Standard Iron Bar
 - SSIB Short Standard Iron Bar
 - IB Iron Bar
 - (WIT) Witness
 - (AOG) Annis, O'Sullivan, Vollebek Ltd.
 - Meas. Measured
 - (P1) Registered Plan 19
 - (P2) Plan by F.H. Gooch O.L.S. dated May 26, 1988
 - (P3) Plan by Payette, Himma, Delorme Ltd. dated October 30, 1997
 - (P4) Plan 50R-3374
 - (D1) Inst. RR25946
 - (D2) Inst. RR99350
 - BF Board Fence
 - (Prop) Proportioned

Distances and coordinates shown on this plan are ground distances and can be converted to grid distances by multiplying by the combined scale factor of 0.99998.

Bearings are grid, derived from Can-Net 3.0 Real Time Network GPS observations on reference points A and B, shown hereon, having a bearing of N88°16'40"E and are referenced to Specified Control Points 01919680184 and 019198434761, MTM Zone 9 (76°30' West Longitude) NAD-83 (original).

For bearing comparisons, a rotation of 0°41'30" counter-clockwise was applied to bearings on Registered Plan 19, Plan 50R-3374 and Plan by Payette, Himma, Delorme Ltd. dated October 30, 1997

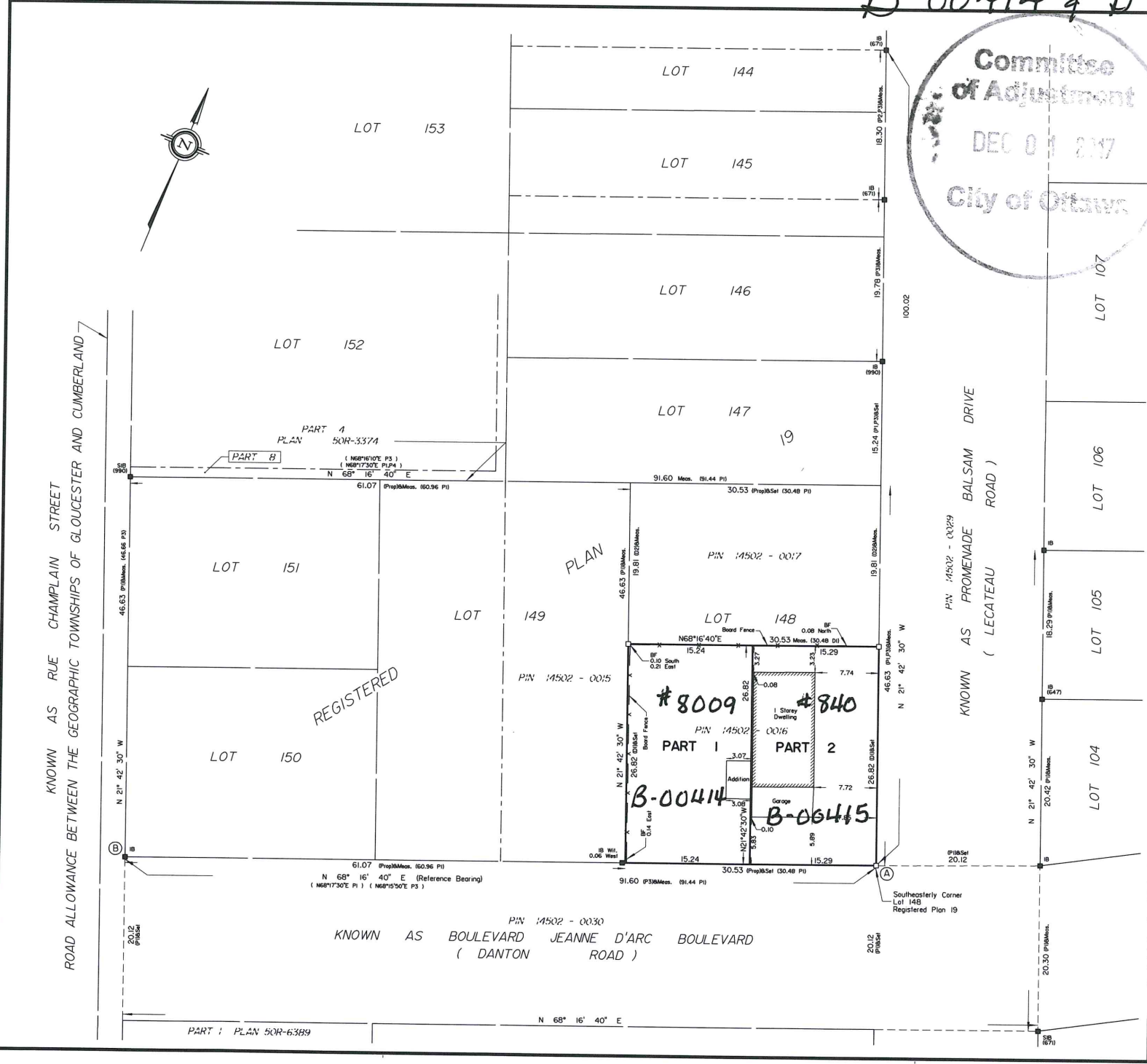
Coordinates are derived from Can-Net 3.0 Real Time Network GPS observations referenced to Specified Control Points 01919680184 and 019198434761, MTM Zone 9 (76°30' West Longitude) NAD-83 (original).

Coordinate values are to urban accuracy in accordance with O. Reg. 216/10.

- . 01919680184 Northing 5040610.16 Easting 384736.56
- . 019198434761 Northing 5038178.12 Easting 372436.11
- . Point A Northing 5038770.69 Easting 381475.03
- . Point B Northing 5038736.78 Easting 381389.93

Caution: Coordinates cannot, in themselves, be used to re-establish corners or boundaries shown on this plan.

ANNIS, O'SULLIVAN, VOLLEBEK LTD.
 225 Industrial Street, P.O. Box 579
 Embury, Ont. K0A 1W0
 Phone: (613) 443-3364 / Fax: (613) 443-3229
 Email: Embury@annis.com
 Ontario Land Surveyors Reg. No. F-8234-17



KNOWN AS RUE CHAMPLAIN STREET
 ROAD ALLOWANCE BETWEEN THE GEOGRAPHIC TOWNSHIPS OF GLOUCESTER AND CUMBERLAND

KNOWN AS PROMENADE BALSAM DRIVE
 (LECATEAU ROAD)

KNOWN AS BOULEVARD JEANNE D'ARC BOULEVARD
 (DANTON ROAD)

PART 1 PLAN 50R-6389

N 68° 16' 40" E