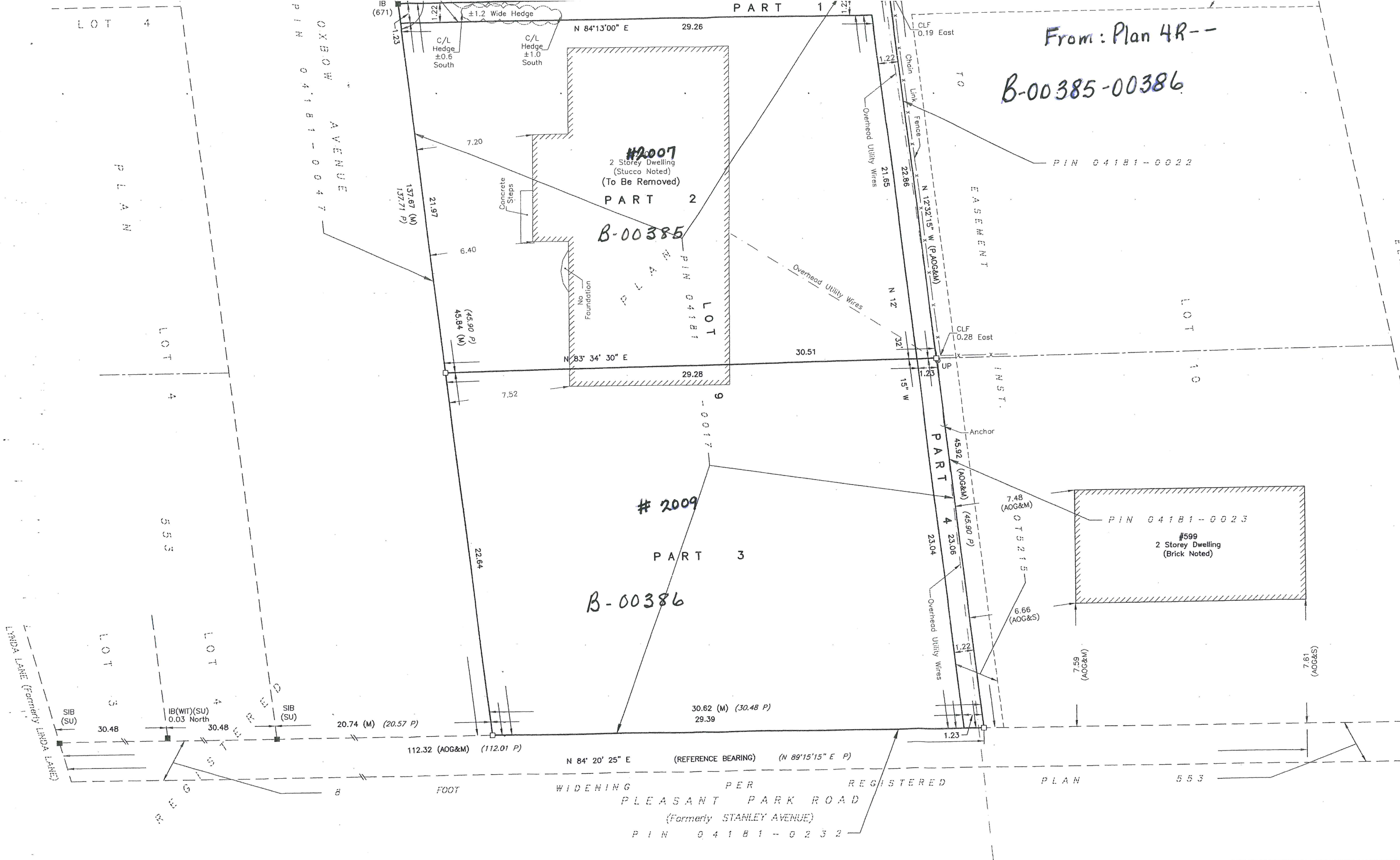


From: Plan 4R--
B-00385-00386



PIN 04181-0047
OXBOW AVENUE

PIN 04181-0022

PIN 04181-0023

#2007
2 Storey Dwelling
(Stucco Noted)
(To Be Removed)

#599
2 Storey Dwelling
(Brick Noted)

B-00385

B-00386

N 84° 20' 25" E (REFERENCE BEARING) (N 89° 15' 15" E P)

WIDENING PER REGISTERED PLAN

PLEASANT PARK ROAD

(Formerly STANLEY AVENUE)

PIN 04181-0232

LOT 4

PLAN

LOT 4

553

LOT 5

LOT 4

8

LINDA LANE (Formerly LINDA LANE)

IB(WT)(SU)
0.03 North

SIB (SU)

20.74 (M) (20.57 P)

112.32 (AOG&M) (112.01 P)

30.62 (M) (30.48 P)
29.39

1.23

553

IB (671)

26.1

±1.2 Wide Hedge

C/L Hedge ±0.6 South

C/L Hedge ±1.0 South

N 84° 13' 00" E 29.26

CLF 0.19 East

1.22

Overhead Utility Wires

21.65

22.86

N 12° 32' 15" W (PAOG&M)

EASEMENT

N 12°

CLF 0.28 East

UP

Anchor

45.92 (AOG&M)

4 (45.90 P)

4 23.06

23.04

Overhead Utility Wires

1.22

7.48 (AOG&M)

0.5215

6.66 (AOG&S)

7.59 (AOG&M)

1.97 (AOG&M)

Concrete Steps

No Foundation

(45.90 P)
45.84 (M)

7.52

N 83° 34' 30" E

29.28

30.51

15" W

7.23

#2009

PART 3

9

0017

22.64

30.62 (M) (30.48 P)
29.39

PART 4

4 23.06

23.04

Overhead Utility Wires

1.22

1.23

INST.

Anchor

7.48 (AOG&M)

0.5215

6.66 (AOG&S)

7.59 (AOG&M)

1.97 (AOG&M)

N 84° 20' 25" E (REFERENCE BEARING) (N 89° 15' 15" E P)

WIDENING PER REGISTERED PLAN

PLEASANT PARK ROAD

(Formerly STANLEY AVENUE)

PIN 04181-0232