

LOT 24
COCCASSION

LOT 23

LOT 22

PART 2
SR-13637

PART 1
SR-13637

Committee of Adjustment
SEP 08 2017
City of Ottawa

PLAN 4R-
RECEIVED AND DEPOSITED
DATE: _____
DATE: _____
BRIAN J. WEBSTER
ONTARIO LAND SURVEYOR
REPRESENTATIVE FOR THE LAND TITLES DIVISION
OF OTTAWA-CARLETON No. 4

SCHEDULE			
PART	LOT	CONCESSION	PIN
1	PART OF 23	9	PART OF 04547-0040
2			

PLAN OF SURVEY OF
PART OF LOT 23
CONCESSION 9
(GEOGRAPHIC TOWNSHIP OF HUNTLEY)
CITY OF OTTAWA



METRIC CONVERSION
DISTANCES AND COORDINATES SHOWN ON THIS PLAN ARE IN METRES AND CAN BE CONVERTED TO FEET BY DIVIDING BY 0.3048

GRID SCALE CONVERSION
DISTANCES ARE GRID AND CAN BE CONVERTED TO GRID BY MULTIPLYING BY THE COMBINED SCALE FACTOR OF 0.999993

BEARING NOTE
BEARINGS ARE GRID, DERIVED FROM CAN-NET VRS NETWORK GPS OBSERVATIONS ON HCC HORIZONTAL CONTROL MONUMENTS 19773035 AND 19680191, CENTRAL MERIDIAN, 76° 30' WEST LONGITUDE MTN ZONE 9, NAD83 (ORIGINAL).
19773035 N:5006040.42 E:324895.04
19680191 N:5033364.26 E:389664.94
FOR BEARING COMPARISONS, A ROTATION OF 0° XX' XX" COUNTER-CLOCKWISE HAS BEEN APPLIED TO BEARINGS ON PLAN XX-XXXXX.

LEGEND

SYMBOL	DESCRIPTION	FOUND MONUMENTS
■	SET MONUMENT	SET MONUMENTS
□	IRON BAR	IRON BAR
▨	ROUND IRON BAR	ROUND IRON BAR
▩	STANDARD IRON BAR	STANDARD IRON BAR
⊕	SURVEY STANDARD IRON BAR	SURVEY STANDARD IRON BAR
⊙	CUT CROSS	CUT CROSS
CP	CONCRETE PIN	CONCRETE PIN
WIT	WITNESS	WITNESS
PIN	PROPERTY IDENTIFICATION NUMBER	PROPERTY IDENTIFICATION NUMBER
MEAS	MEASURED	MEASURED
PROP	PROPORTIONED	PROPORTIONED
OS	OSCEAN UNBOUND	STANTEC GEOMATICS LTD.
SG	STANTEC GEOMATICS LTD.	STANTEC GEOMATICS LTD.
DRP	OBSERVED REFERENCE POINT	OBSERVED REFERENCE POINT
•		
•		
•		

OBSERVED REFERENCE POINTS DERIVED FROM THE CAN-NET VRS NETWORK GPS OBSERVATIONS ON HCC HORIZONTAL CONTROL MONUMENTS 19773035 AND 19680191, CENTRAL MERIDIAN, 76° 30' WEST LONGITUDE MTN ZONE 9, NAD83 (ORIGINAL). COORDINATES TO UTM ACCURACY PER SEC 14(2) OF O. REG. 214/10

ORP ID	NORTHING	EASTING
1		
2		
3		

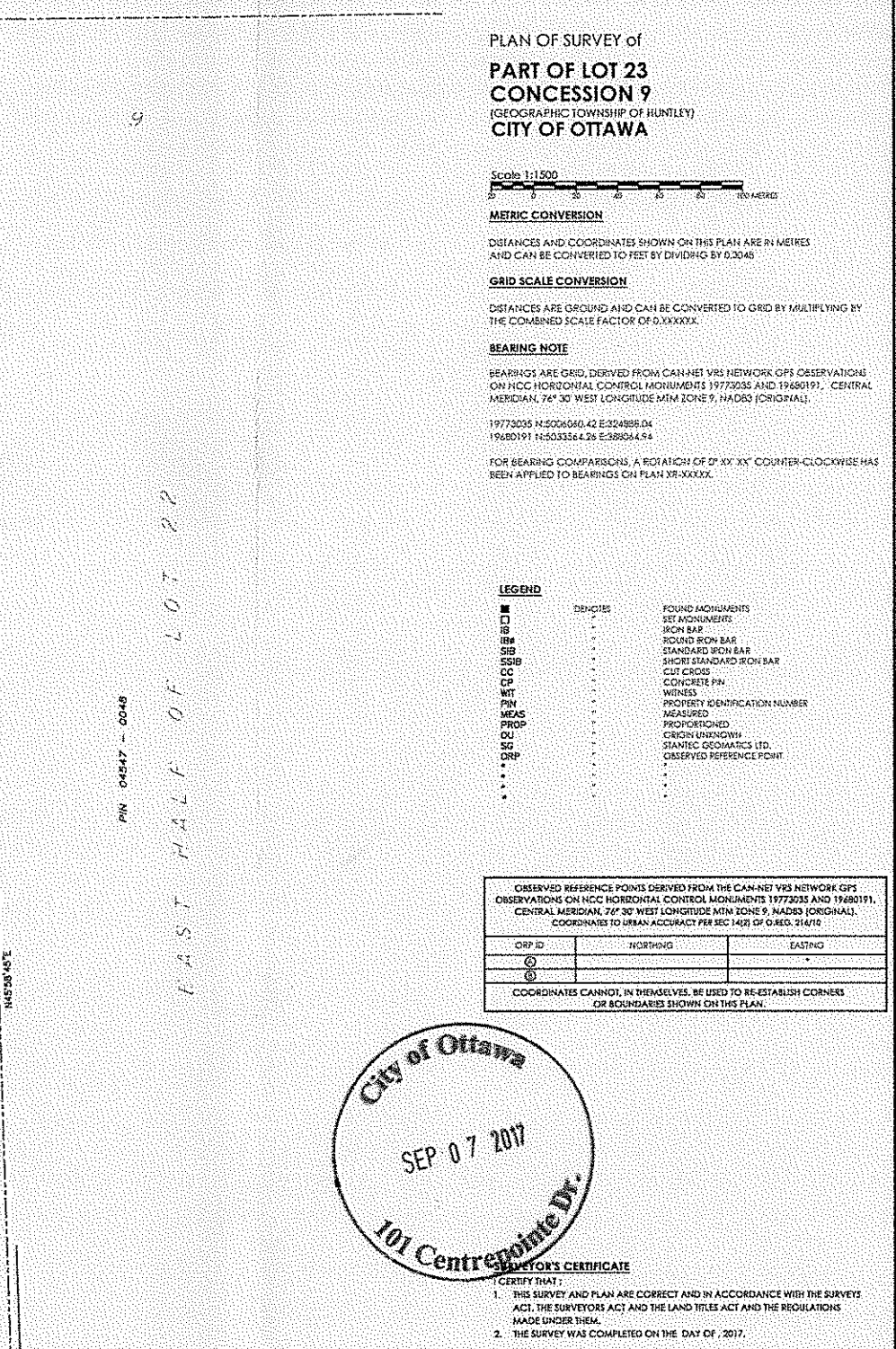
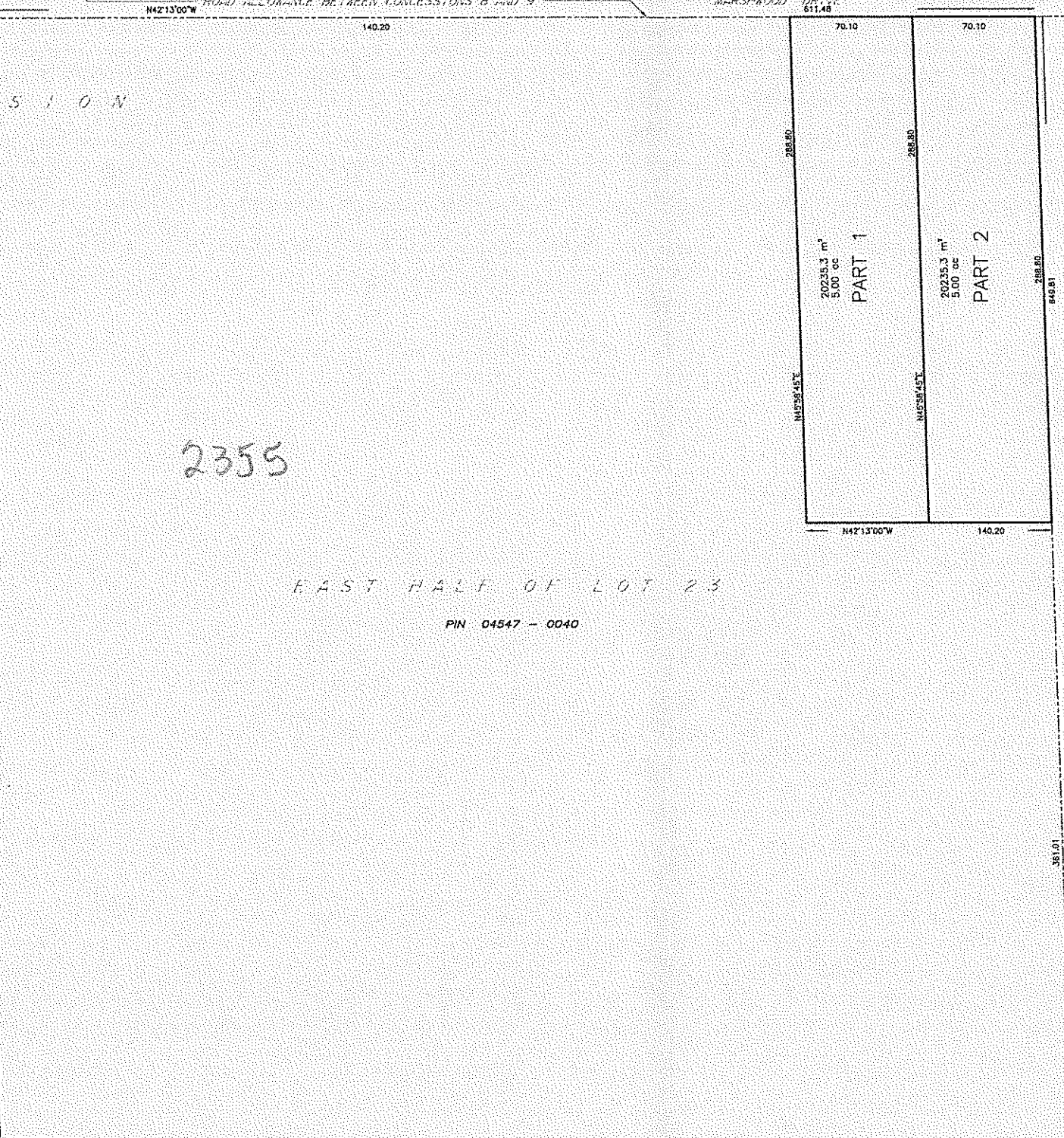
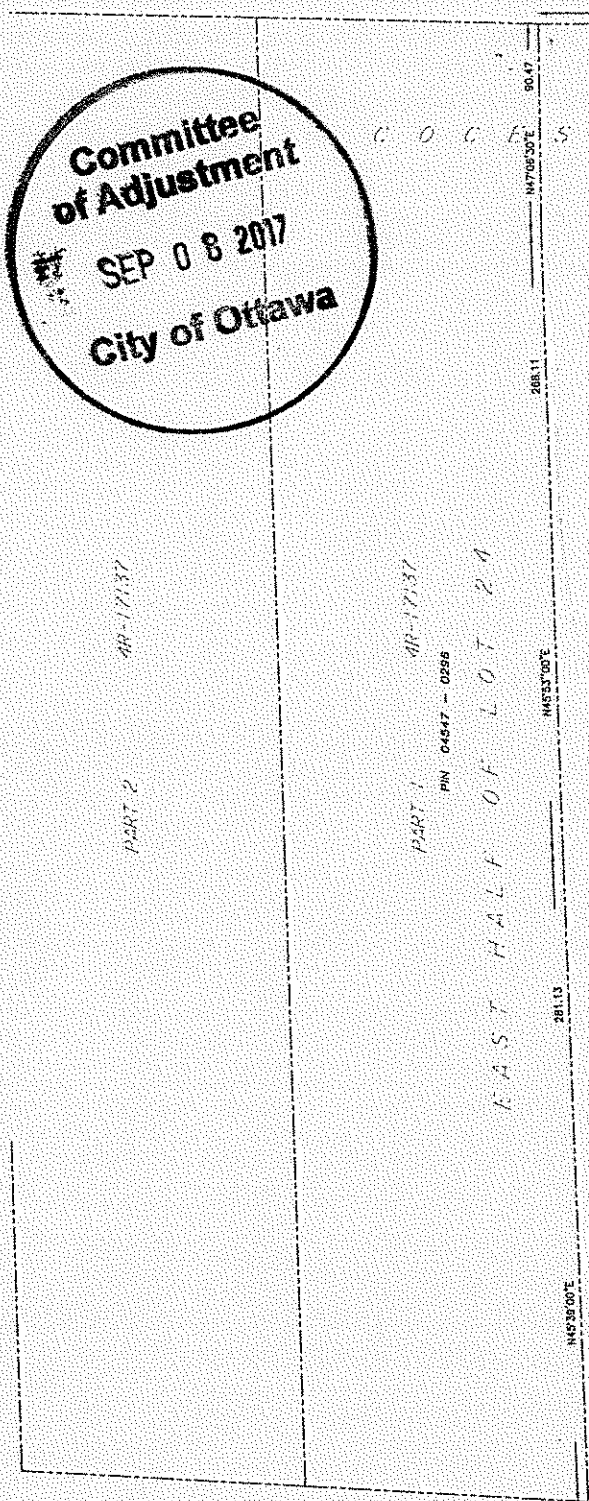
COORDINATES CANNOT, IN THEMSELVES, BE USED TO RE-ESTABLISH CORNERS OR BOUNDARIES SHOWN ON THIS PLAN.

City of Ottawa
SEP 07 2017
101 Centrepoin Dr.

SURVEYOR'S CERTIFICATE
I CERTIFY THAT:
1. THIS SURVEY AND PLAN ARE CORRECT AND IN ACCORDANCE WITH THE SURVEYS ACT, THE SURVEYORS ACT AND THE LAND TITLES ACT AND THE REGULATIONS MADE UNDER THEM.
2. THE SURVEY WAS COMPLETED ON THE DAY OF, 2017.

DATE: _____
BRIAN J. WEBSTER
ONTARIO LAND SURVEYOR

Stantec
CANADA LAND SURVEYORS
ONTARIO LAND SURVEYORS
1201 CLIVE AVENUE, SUITE 400
OTTAWA, ONTARIO, K2C 3G4
TEL: 416 722 4425 FAX: 416 722 2777
stantec.com



PIN 04547 - 0298
WEST HALF OF LOT 24

PIN 04547 - 0039
WEST HALF OF LOT 23

PIN 04547 - 0041
WEST HALF OF LOT 22