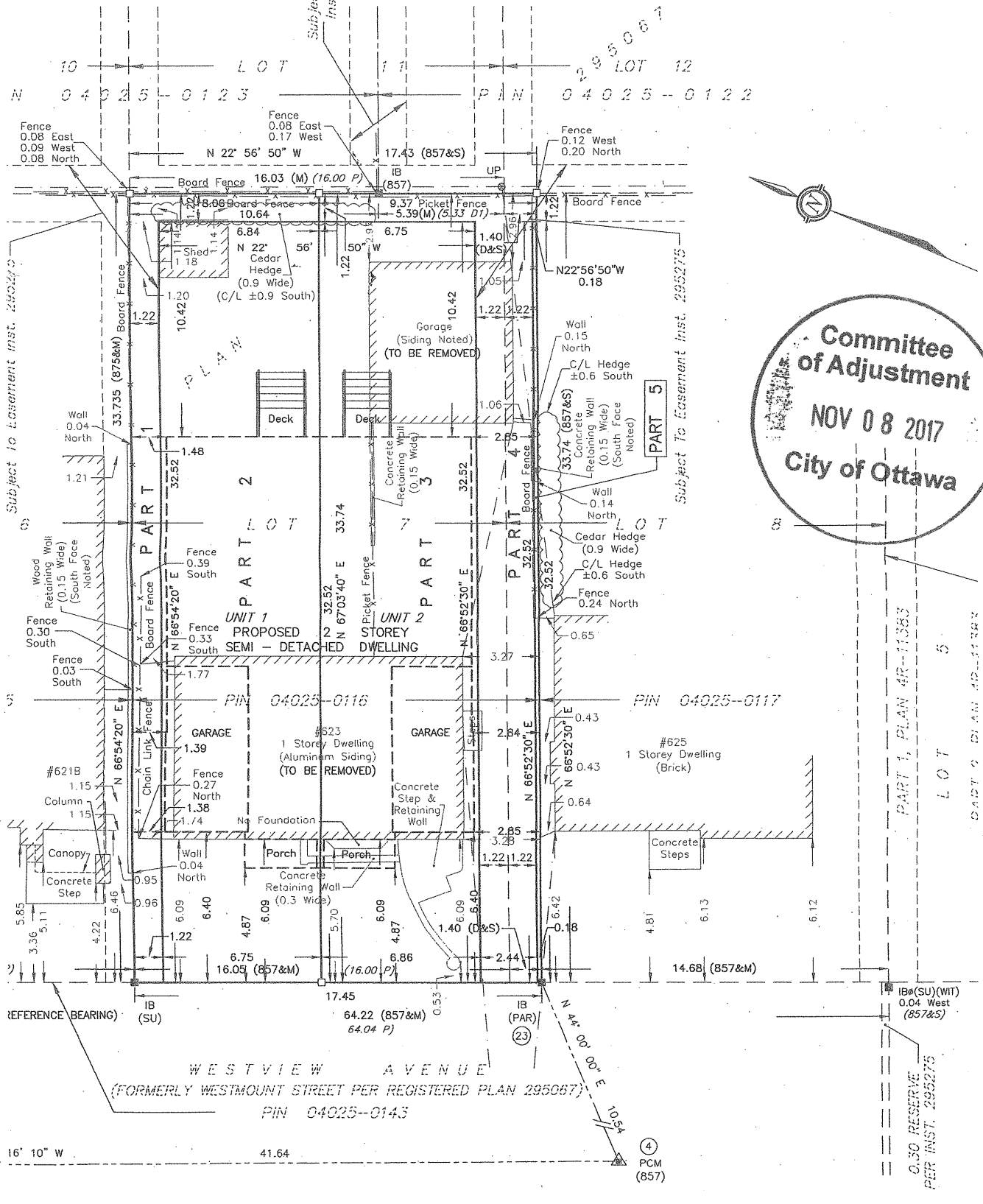


MINIARY FOR REVIEW AND COMMENT
 FEB. 7, 2017

SCHEDULE

LOT WIDTH	AREA(SQ.M.)	PART	LOT	PLAN	
7.99	270.4	1	PART OF 7	295067	ALL OF
		2			
		3			
9.46	317.9	4	PART OF 7 & 8		
		5	PART OF 8		

PARTS 1 & 4 - SUBJECT OF EASEMENT INST. 295275



Committee
 of Adjustment
 NOV 08 2017
 City of Ottawa

PART 1, PLAN 4R-11383
 LOT 5

0.30 RESERVE
 PER INST. 295275

16' 10" W

4
 PCM
 (857)