

Committee of Adjustments
 JUN 27 2017
 City of Ottawa

B-00195

METRIC
 DISTANCES AND COORDINATES SHOWN ON THIS PLAN ARE IN METRES
 AND CAN BE CONVERTED TO FEET BY DIVIDING BY 0.3048

SCHEDULE			
PART	LOT	PLAN	PIN
1	PART OF 48	293	ALL OF 03969-D181
2	PART OF 48 & 47		

RICHARDSON AVENUE
 PIN 03969-0152

I REQUIRE THIS PLAN TO BE DEPOSITED UNDER THE LAND TITLES ACT.
 DATE _____
 JOHN H. GUTRI, O.L.S.

PLAN 4R-
 RECEIVED AND DEPOSITED
 DATE _____
 REPRESENTATIVE FOR LAND REGISTRAR OF THE LAND TITLES DIVISION OF OTTAWA - CARLETON (N 4)

PLAN OF SURVEY OF
 LOT 48 & PART OF LOT 47
 REGISTERED PLAN 293
 CITY OF OTTAWA

SCALE 1 : 150
 0 1 2 5 10 15 metres

FAIRHALL, MOFFATT & WOODLAND LIMITED
 ONTARIO LAND SURVEYORS

NOTES

- BEARINGS ARE GRID, DERIVED FROM OBSERVED REFERENCE POINTS (1) AND (2) BY REAL TIME NETWORK OBSERVATIONS AND ARE REFERRED TO THE CENTRAL MERIDIAN, 78°30' LONGITUDE, M.T.M. ZONE 9 NAD83 ORIGINAL.
- DISTANCES ARE GROUND AND CAN BE CONVERTED TO GRID BY MULTIPLYING BY THE COMBINED SCALE FACTOR 0.99993.

LEGEND

- - SURVEY MONUMENT FOUND (SU) - SOURCE UNKNOWN
- SIB - STANDARD IRON BAR (SIB) - WITNESS
- IB - IRON BAR
- CP - CONCRETE PIN
- PB - PLASTIC BAR
- φ - ROUND
- (P) - PLAN 4R-29368
- (M) - MEASURED
- (S) - SET
- (671) - FRED H. GOOCH, O.L.S.
- (647) - H. R. FARLEY, O.L.S.
- (657) - FAIRHALL, MOFFATT & WOODLAND LTD. (PLAN DATED AUG. 27, 2012)
- (1319) - W. J. WEBSTER, O.L.S.
- PIN - PROPERTY IDENTIFIER NUMBER

SURVEYOR'S CERTIFICATE

I CERTIFY THAT:

- THIS SURVEY AND PLAN ARE CORRECT AND IN ACCORDANCE WITH THE SURVEYS ACT, THE SURVEYORS ACT, THE LAND TITLES ACT AND THE REGULATIONS MADE UNDER THEM.
- THE SURVEY WAS COMPLETED ON _____

DATE _____ JOHN H. GUTRI
 ONTARIO LAND SURVEYOR

Fairhall Moffatt & Woodland
 LIMITED
 SURVEYING AND LAND SURVEYS

Surveying and Land Information Services
 100-800 TERRY FOX DRIVE, KANATA, ONTARIO K0L 4R6
 TEL: (613) 591-2580 FAX: (613) 591-1495
 www.fmw.ca

JOB No. V 4 2 3 0 0
 E 361281, N 5025697
 REFERENCE No. 19 - 293 NP
 S:\J085\412300\DWG 2016-07-18 rp423_b.dwg (lb)

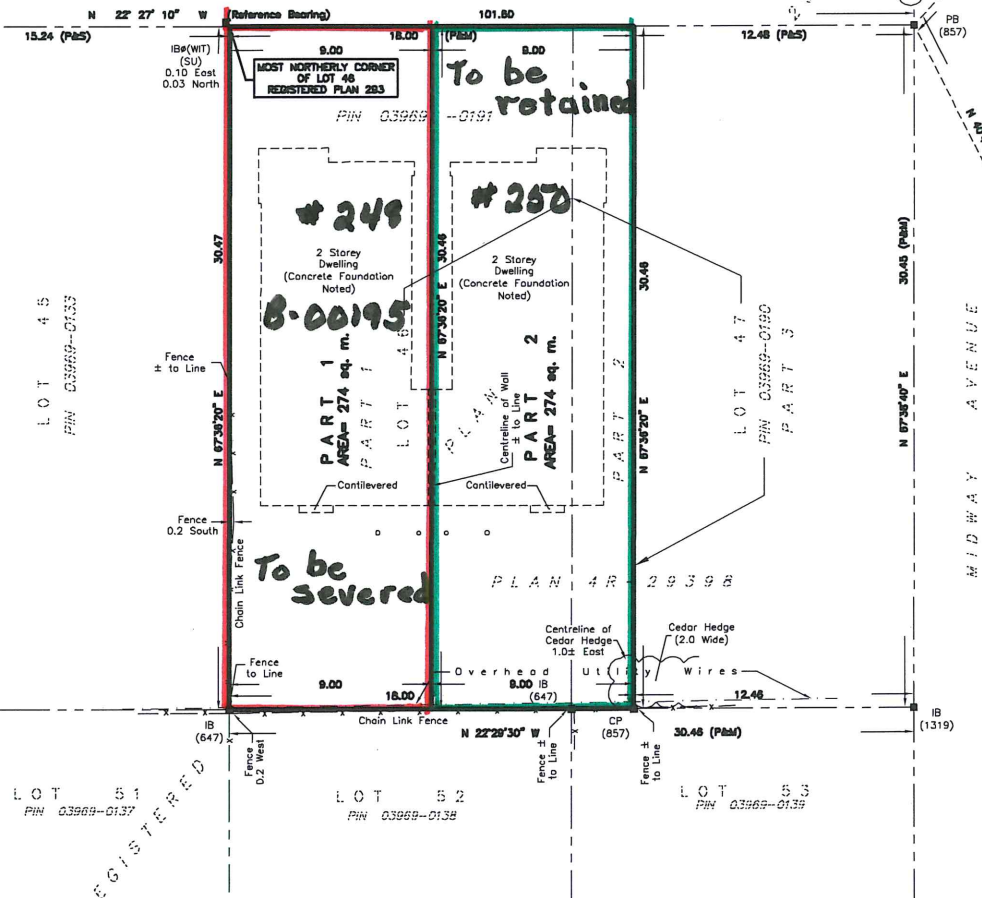
COORDINATES WERE DERIVED FROM REAL TIME NETWORK OBSERVATIONS (SMARTNET) MTM ZONE 9, NAD83 ORIGINAL.

COORDINATES HAVE BEEN DETERMINED TO AN URBAN ACCURACY IN ACCORDANCE WITH SECTION 14(2) OF O. REG. 218/10.

POINT ID	NORTHING	EASTING
11	5028088.79	381242.17
12	5025983.19	381280.86
19	5029081.77	381236.67
152	5025987.88	381278.48
D19785702	5024300.63	359828.78

COORDINATES CANNOT IN THEMSELVES BE USED TO RE-ESTABLISH CORNERS OR BOUNDARIES SHOWN ON THIS PLAN.

PLAN PREPARED FOR
 COMMITTEE OF ADJUSTMENTS



LOT 45 PIN 03969-0153
 LOT 51 PIN 03969-0137
 LOT 52 PIN 03969-0138
 LOT 53 PIN 03969-0139

REGISTERED