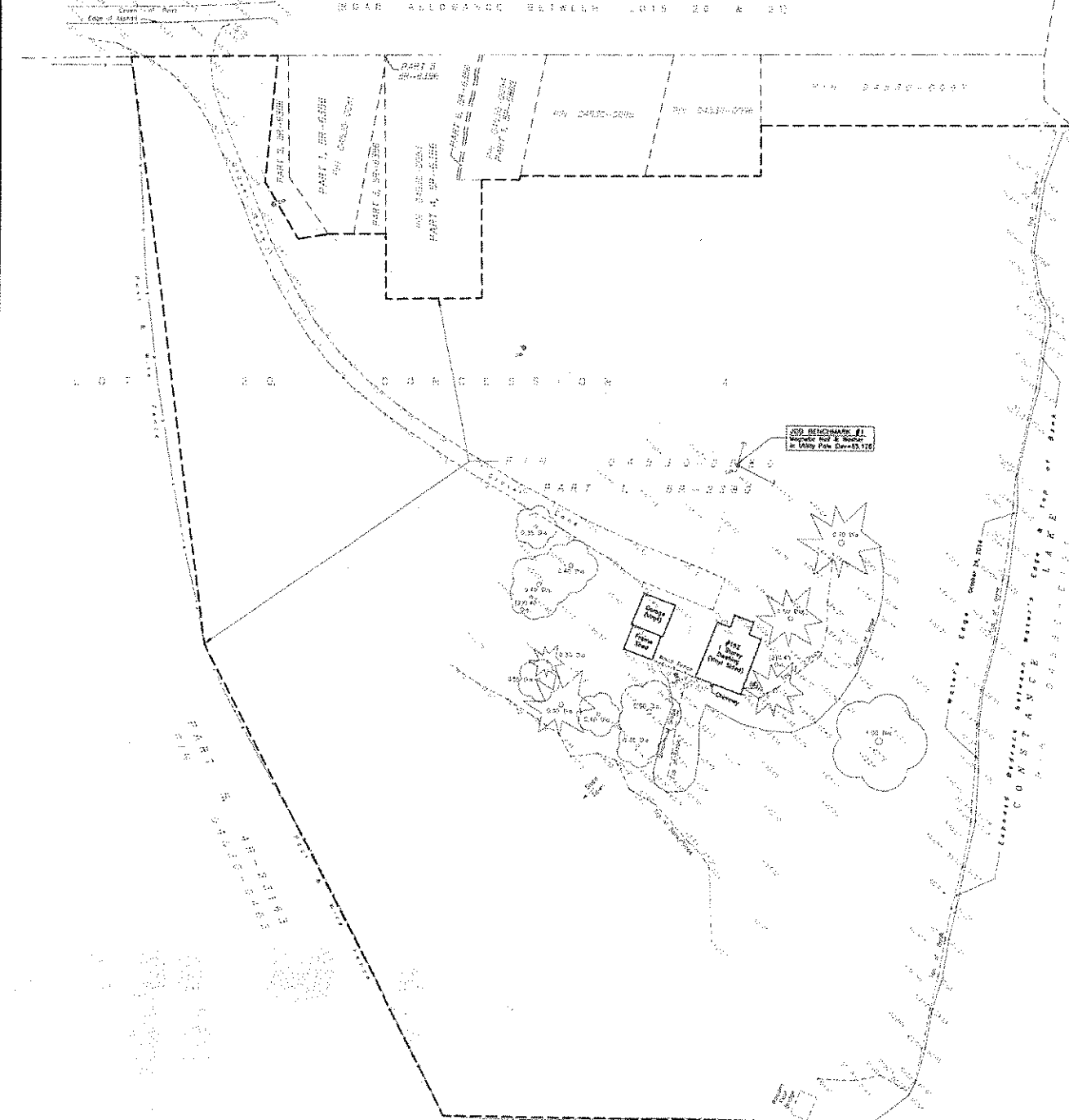


METRIC
DISTANCES AND ELEVATIONS SHOWN ON THIS PLAN ARE IN METRES
AND CAN BE CONVERTED TO FEET BY MULTIPLYING BY 0.3048

JOB BENCHMARK #2
Top of concrete Post & Marker
in Survey Peg 02784
Elevation=48.810

JOB BENCHMARK #3
Top of concrete Post
in Concrete Peg
Elevation=48.822

CONSTANCE LAKE ROAD
ROAD ALLOWANCE BETWEEN LOTS 20 & 21



Committee
of Adjustment
JUN 16 2017
City of Ottawa

TOPOGRAPHIC SURVEY OF
PART OF LOT 20
CONCESSION 4
GEOGRAPHIC TOWNSHIP OF MARCH
Now CITY OF OTTAWA

SCALE 1 : 400
0 10 20 40 metres

FAIRHALL, MOFFATT & WOODLAND LIMITED
DIYRHO LAND SURVEYORS

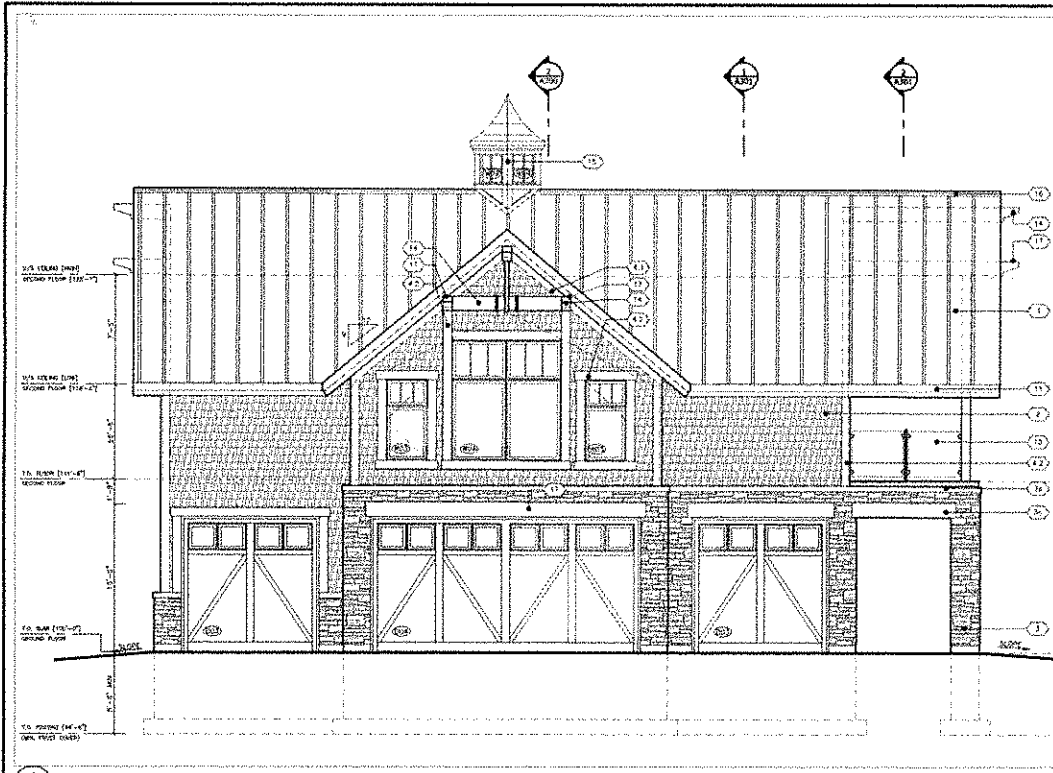
ELEVATION NOTES
1. ELEVATIONS SHOWN HEREON ARE REFERRED TO GEODETIC DATUM.
2. IT IS THE RESPONSIBILITY OF THE USER OF THIS INFORMATION TO
VERIFY THAT THE JOB BENCHMARKS HAVE NOT BEEN ALTERED OR
DISTURBED AND THAT THEIR RELATIVE ELEVATION AND DESCRIPTION
AGREE WITH THE INFORMATION SHOWN ON THIS DRAWING.

UTILITY NOTES
1. THIS DRAWING CANNOT BE ACCEPTED AS ACKNOWLEDGING ANY
UNDERGROUND UTILITIES AND IT WILL BE THE RESPONSIBILITY
OF THE USER TO CONTACT THE RESPECTIVE UTILITY AUTHORITIES
FOR CONFIRMATION OR LOCATION.
2. BEFORE ANY WORK INVOLVING FENCING, EXCAVATING, ETC., A FIELD
LOCATION OF UNDERGROUND PLANT BY THE PERTINENT UTILITY
AUTHORITY IS MANDATORY.

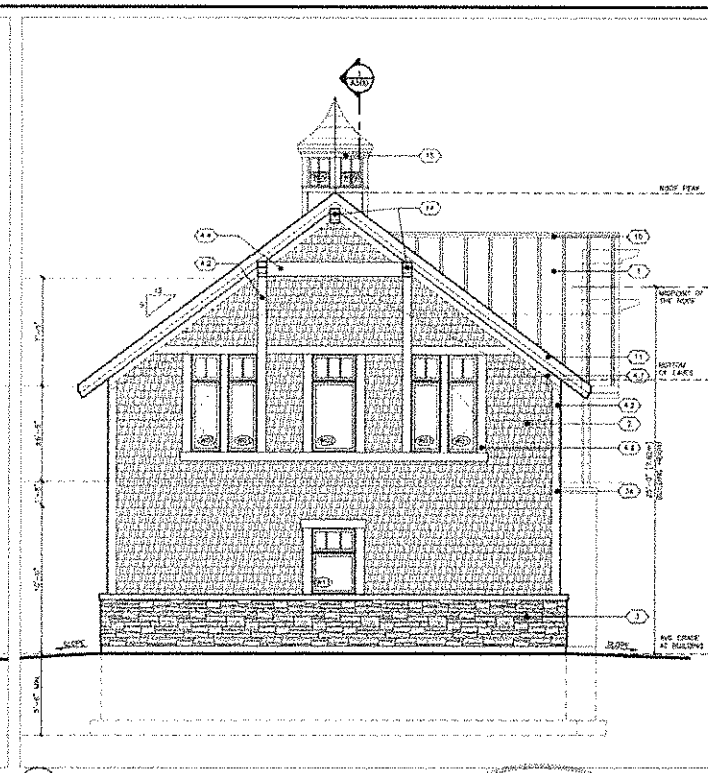
NOTES
1. BEARING ARE GRID DERIVED FROM GPS REAL-TIME NETWORK (RTN)
OBSERVATIONS AND ARE REFERRED TO THE CENTRAL MERICAN TIME-ZONE
LONGITUDE ZONE 6 OF THE NAD 83 GRID SYSTEM (NAD83 ORSNAL).
2. CORRECTED SEA LEVEL CORRECTION FACTOR 0.999816.
3. TITLE AND PROPERTY INFORMATION COMPILED FROM RECORDS OF THE
LAND REGISTRY OFFICE. THIS PLAN DOES NOT REFLECT A CURRENT
BOUNDARY SURVEY AND BOUNDARY SURVEYING WAS UNDERTAKEN FOR
THE PURPOSES OF THIS PLAN.
4. THE SURVEY REPRESENTED BY THIS PLAN WAS COMPLETED ON
OCTOBER 24, 2014.

LEGEND
Ø - DIAMETER
PVI - PROPERTY IDENTIFIER NUMBER
⊙ - WELL
⊙ - UTILITY POLE
- - - - - GUY WIRE AND ANCHOR
⊙ - CONCRETE TREE
⊙ - DECIDUOUS TREE
- - - - - OVERHEAD UTILITY WIRES

THIS IS NOT A
WELL COPY
UNLESS INDICATED
WITH SEAL



1 SOUTH-EAST ELEVATION
REV. 01/17



2 SOUTH WEST ELEVATION
REV. 01/17

| NO. | REVISION | DATE |
|-----|-------------------------------|------------|
| 1 | ISSUED FOR CONSTRUCTION | SEP. 28/14 |
| 2 | ISSUED FOR CONSTRUCTION | NOV. 13/14 |
| 3 | ISSUED FOR REVIEW | DEC. 18/14 |
| 4 | ISSUED FOR CONSTRUCTION | NOV. 11/15 |
| 5 | ISSUED FOR FINAL CONSTRUCTION | NOV. 18/15 |
| 6 | ISSUED FOR BUILDING PERMIT | NOV. 22/16 |
| 7 | ISSUED FOR 2 OF A APPLICATION | JUNE 10/17 |

- LEGEND:
- 17 PRE-FINISHED STANDING SEAM METAL ROOF SYSTEM 20' HEIGHTS FOR PROFILE BY OEM; ROOFING OR EQUIVALENT; 1/4" X 1/2" GUTTERS AS REQUIRED
 - 2 PRE-FINISHED CEILING PANELS (MATERIAL PER MANUFACTURER'S SPECIFICATIONS)
 - 3 STONE VENER
 - 4 STONE VENER SLOPED WALL
 - 5 STONE HEADER/SILL
 - 6 LIMESTONE HEADER
 - 7 PRE-FINISHED WOOD TRIM (MATERIAL OR APPROVED EQUAL)
 - 8 PRE-FINISHED WOOD TRIM (MATERIAL OR APPROVED EQUAL)
 - 9 PRE-FINISHED WOOD TRIM (MATERIAL OR APPROVED EQUAL)
 - 10 PRE-FINISHED WOOD TRIM (MATERIAL OR APPROVED EQUAL)
 - 11 PRE-FINISHED WOOD TRIM (MATERIAL OR APPROVED EQUAL)
 - 12 1/2" PRE-FINISHED WOOD TRIM (MATERIAL OR APPROVED EQUAL)
 - 13 1/4" PRE-FINISHED WOOD TRIM (MATERIAL OR APPROVED EQUAL)
 - 14 1/4" PRE-FINISHED WOOD TRIM (MATERIAL OR APPROVED EQUAL)
 - 15 1/4" PRE-FINISHED WOOD TRIM (MATERIAL OR APPROVED EQUAL)
 - 16 1/4" PRE-FINISHED WOOD TRIM (MATERIAL OR APPROVED EQUAL)
 - 17 PRE-FINISHED METAL VALLEY FLASHING
 - 18 PRE-FINISHED METAL VALLEY FLASHING
 - 19 PRE-FINISHED METAL VALLEY FLASHING
 - 20 PRE-FINISHED METAL VALLEY FLASHING
 - 21 PRE-FINISHED METAL VALLEY FLASHING
 - 22 PRE-FINISHED METAL VALLEY FLASHING
 - 23 PRE-FINISHED METAL VALLEY FLASHING
 - 24 PRE-FINISHED METAL VALLEY FLASHING
 - 25 PRE-FINISHED METAL VALLEY FLASHING
 - 26 PRE-FINISHED METAL VALLEY FLASHING
 - 27 PRE-FINISHED METAL VALLEY FLASHING
 - 28 PRE-FINISHED METAL VALLEY FLASHING
 - 29 PRE-FINISHED METAL VALLEY FLASHING
 - 30 PRE-FINISHED METAL VALLEY FLASHING
 - 31 PRE-FINISHED METAL VALLEY FLASHING
 - 32 PRE-FINISHED METAL VALLEY FLASHING
 - 33 PRE-FINISHED METAL VALLEY FLASHING
 - 34 PRE-FINISHED METAL VALLEY FLASHING
 - 35 PRE-FINISHED METAL VALLEY FLASHING
 - 36 PRE-FINISHED METAL VALLEY FLASHING
 - 37 PRE-FINISHED METAL VALLEY FLASHING
 - 38 PRE-FINISHED METAL VALLEY FLASHING
 - 39 PRE-FINISHED METAL VALLEY FLASHING
 - 40 PRE-FINISHED METAL VALLEY FLASHING
 - 41 PRE-FINISHED METAL VALLEY FLASHING
 - 42 PRE-FINISHED METAL VALLEY FLASHING
 - 43 PRE-FINISHED METAL VALLEY FLASHING
 - 44 PRE-FINISHED METAL VALLEY FLASHING
 - 45 PRE-FINISHED METAL VALLEY FLASHING
 - 46 PRE-FINISHED METAL VALLEY FLASHING
 - 47 PRE-FINISHED METAL VALLEY FLASHING
 - 48 PRE-FINISHED METAL VALLEY FLASHING
 - 49 PRE-FINISHED METAL VALLEY FLASHING
 - 50 PRE-FINISHED METAL VALLEY FLASHING
 - 51 PRE-FINISHED METAL VALLEY FLASHING
 - 52 PRE-FINISHED METAL VALLEY FLASHING
 - 53 PRE-FINISHED METAL VALLEY FLASHING
 - 54 PRE-FINISHED METAL VALLEY FLASHING
 - 55 PRE-FINISHED METAL VALLEY FLASHING
 - 56 PRE-FINISHED METAL VALLEY FLASHING
 - 57 PRE-FINISHED METAL VALLEY FLASHING
 - 58 PRE-FINISHED METAL VALLEY FLASHING
 - 59 PRE-FINISHED METAL VALLEY FLASHING
 - 60 PRE-FINISHED METAL VALLEY FLASHING
 - 61 PRE-FINISHED METAL VALLEY FLASHING
 - 62 PRE-FINISHED METAL VALLEY FLASHING
 - 63 PRE-FINISHED METAL VALLEY FLASHING
 - 64 PRE-FINISHED METAL VALLEY FLASHING
 - 65 PRE-FINISHED METAL VALLEY FLASHING
 - 66 PRE-FINISHED METAL VALLEY FLASHING
 - 67 PRE-FINISHED METAL VALLEY FLASHING
 - 68 PRE-FINISHED METAL VALLEY FLASHING
 - 69 PRE-FINISHED METAL VALLEY FLASHING
 - 70 PRE-FINISHED METAL VALLEY FLASHING
 - 71 PRE-FINISHED METAL VALLEY FLASHING
 - 72 PRE-FINISHED METAL VALLEY FLASHING
 - 73 PRE-FINISHED METAL VALLEY FLASHING
 - 74 PRE-FINISHED METAL VALLEY FLASHING
 - 75 PRE-FINISHED METAL VALLEY FLASHING
 - 76 PRE-FINISHED METAL VALLEY FLASHING
 - 77 PRE-FINISHED METAL VALLEY FLASHING
 - 78 PRE-FINISHED METAL VALLEY FLASHING
 - 79 PRE-FINISHED METAL VALLEY FLASHING
 - 80 PRE-FINISHED METAL VALLEY FLASHING
 - 81 PRE-FINISHED METAL VALLEY FLASHING
 - 82 PRE-FINISHED METAL VALLEY FLASHING
 - 83 PRE-FINISHED METAL VALLEY FLASHING
 - 84 PRE-FINISHED METAL VALLEY FLASHING
 - 85 PRE-FINISHED METAL VALLEY FLASHING
 - 86 PRE-FINISHED METAL VALLEY FLASHING
 - 87 PRE-FINISHED METAL VALLEY FLASHING
 - 88 PRE-FINISHED METAL VALLEY FLASHING
 - 89 PRE-FINISHED METAL VALLEY FLASHING
 - 90 PRE-FINISHED METAL VALLEY FLASHING
 - 91 PRE-FINISHED METAL VALLEY FLASHING
 - 92 PRE-FINISHED METAL VALLEY FLASHING
 - 93 PRE-FINISHED METAL VALLEY FLASHING
 - 94 PRE-FINISHED METAL VALLEY FLASHING
 - 95 PRE-FINISHED METAL VALLEY FLASHING
 - 96 PRE-FINISHED METAL VALLEY FLASHING
 - 97 PRE-FINISHED METAL VALLEY FLASHING
 - 98 PRE-FINISHED METAL VALLEY FLASHING
 - 99 PRE-FINISHED METAL VALLEY FLASHING
 - 100 PRE-FINISHED METAL VALLEY FLASHING

Committee
of Adjustment

JUN 16 2017

City of Ottawa

CONSTRUCTION

Vandenberg & Wildeboer
ARCHITECTS

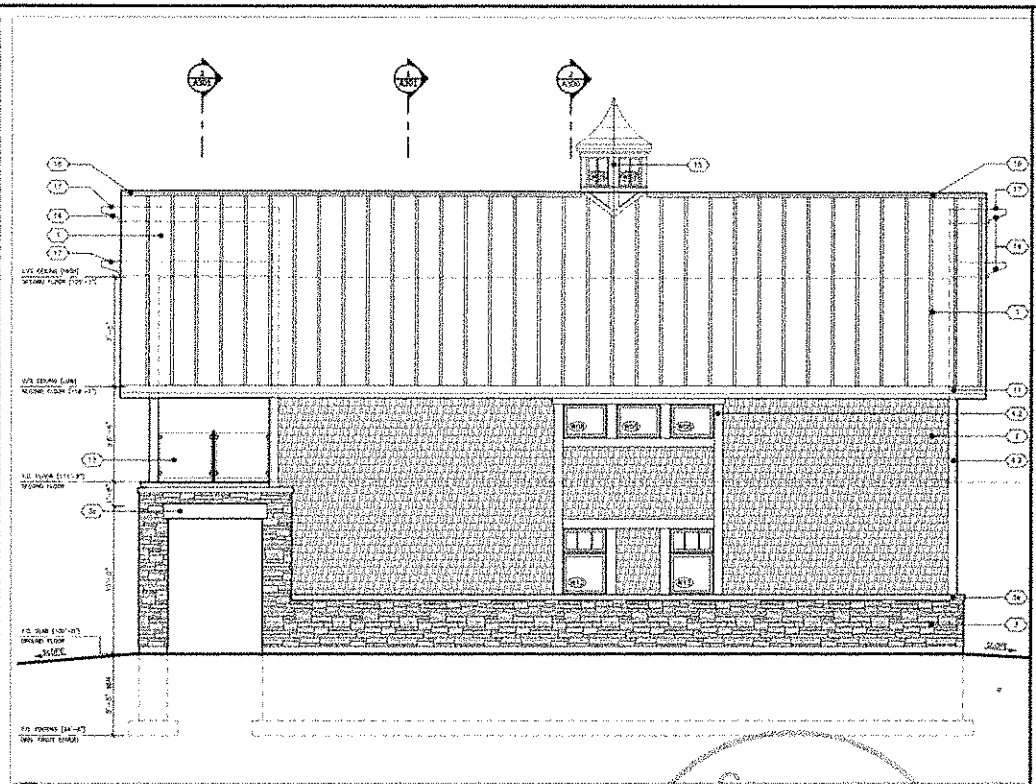
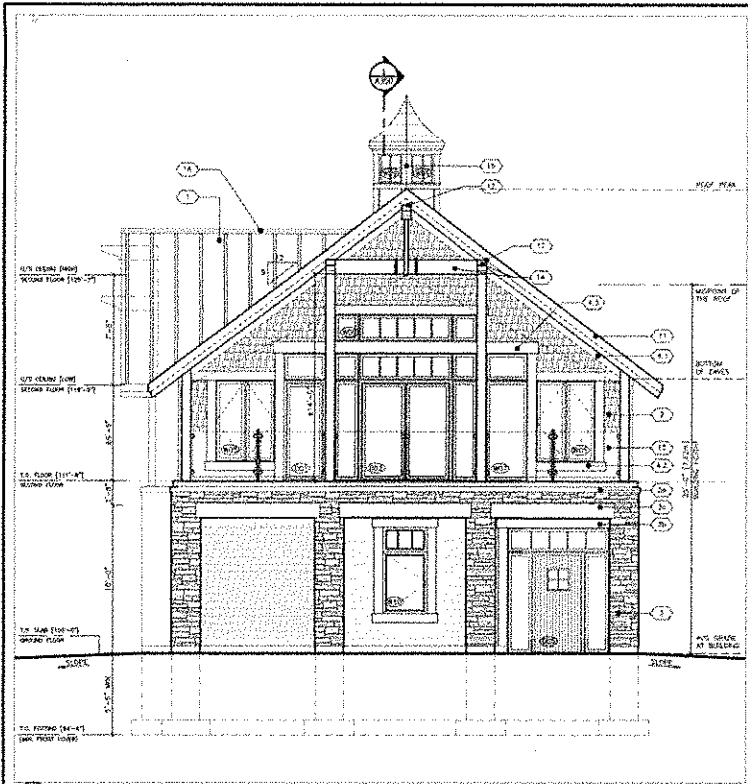
PROJECT TITLE
CRAIG PROPERTY: GARAGE
THE CONSTRUCTION OF A GARAGE ON THE 1ST FLOOR

ISSUED FOR
ELEVATIONS

ISSUED BY: [Name]
DATE: [Date]
SCALE: [Scale]
PROJECT NO.: [Number]

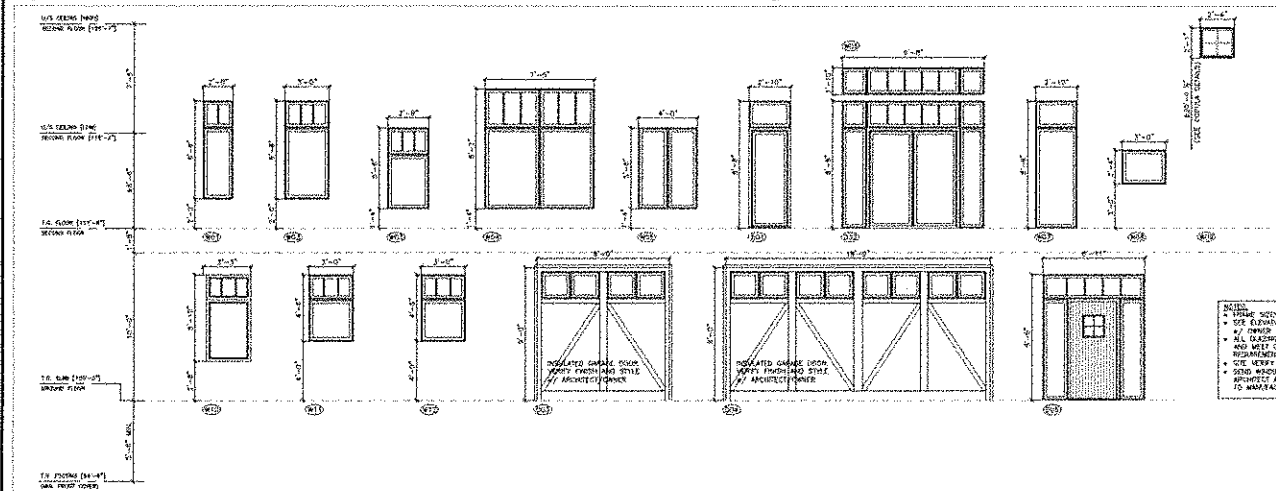
A200

Structural Engineer
[Name]
[Address]
[City, State, Zip]



1 NORTH-EAST ELEVATION
A201

2 NORTH-WEST ELEVATION
A201



3 WINDOW SCHEDULE
A201

NOTES:
 • FRAME NEEDS IMPROVED GLASS.
 • SEE ELEVATIONS FOR ORIGINALLY, VERIFY w/ OWNER PRIOR TO MANUFACTURING.
 • ALL GLASSING TO HAVE A MIN. U-Factor AND MEET CBC ENERGY EFFICIENCY REQUIREMENTS.
 • SEE VERIFY ALL DIMENSIONS (2017).
 • SEND WINDOW/DOOR DRAWINGS TO ARCHITECT AND OWNER FOR REVIEW PRIOR TO MANUFACTURING.

| NO. | REVISION | DATE |
|-----|----------------------------|------------|
| 1 | BASED FOR APPROVAL | SEP 26/15 |
| 2 | REVISED FOR APPROVAL | OCT 12/16 |
| 3 | REVISED FOR REVIEW | NOV 22/16 |
| 4 | REVISED FOR APPROVAL | NOV 12/16 |
| 5 | REVISED FOR FINAL APPROVAL | NOV 18/16 |
| 6 | REVISED FOR A CLEAR HEIGHT | NOV 22/16 |
| 7 | REVISED FOR C/P 2 APPROVAL | JUNE 12/17 |

- LEGEND:
- PRE-FINISHED STAINLESS LEAN METAL ROOF SYSTEM 2"X 12" HASTAGE RIB PROFILE BY PEAL, BOLTER OR EQUIVALENT 1/4" VC GUTTERS AS INDICATED
 - PRE-FINISHED CEDAR SIDINGS (MATCHED OR APPROVED EQUAL)
 - STONE VENEER
 - STONE VENEER SLOPED SILL
 - STONE VENEER/PILL
 - LANTERNIC HEADS
 - 4" PRE-FINISHED WOOD TRIM (MATCHED OR APPROVED EQUAL)
 - 4" PRE-FINISHED WOOD TRIM (MATCHED OR APPROVED EQUAL)
 - 4" PRE-FINISHED WOOD TRIM (MATCHED OR APPROVED EQUAL)
 - 1" PRE-FINISHED WOOD TRIM (MATCHED OR APPROVED EQUAL)
 - 2" WOOD FLASHING @ ALL ROOF/ WALL INTERSECTIONS
 - PRE-FINISHED METAL VALLEY FLASHING
 - CONCRETE/STAINLESS OR CONC. FIN. PER MANUFACTURER'S SPECIFICATIONS
 - PRE-FINISHED WOOD TRIM BOARD (MATCHED OR APPROVED EQUAL)
 - PRE-FINISHED WOOD 4" TRIM BOARD (MATCHED OR APPROVED EQUAL)
 - CONCRETE BEARING (2017 OR APPROVED EQUAL)
 - PRE-FINISHED WOOD SLOPED FASCIA (MATCHED OR APPROVED EQUAL)
 - PRE-FINISHED WOOD SHEET (MATCHED OR APPROVED EQUAL) 1/4" PLYTH. METAL GABLE VENT 2017
 - PRE-FINISHED GLASS UNITS (2017)
 - COLD WOOD BRAM BOLTING 1/4" CLEAN OF HOOP 1/4" 304L SS (SEE DETAILS)
 - CULPIOLA 1/4" ASK BOARD FROM (SEE DETAILS)
 - PRE-FINISHED METAL ROOF VENT SYSTEM PER MANUFACTURER'S INSTRUCTIONS
 - PRE-FINISHED METAL CAP FLASHING 1/4" CRP EDGE OVER TOP OF EXPOSED WOOD BEAMS

Committee of Adjustment
 JUN 16 2017
 City of Ottawa

CONSTRUCTION

Vandenberg & Wildboer
 A-B-C-B-I-T-E-C-T-S

PROJECT NO. 142

CRAIG PROPERTY: GARAGE
 182 CONROBE LAKE RD. NORTH, ON. J0B 113

ISSUED BY: [Signature]

ELEVATIONS & SCHEDULES

DESIGNED BY: VANDENBERG & WILDBOER
 DRAWN BY: [Signature]
 DATE: 2017-05-15
 SCALE: AS SHOWN
 PROJECT NO.: 142

A201