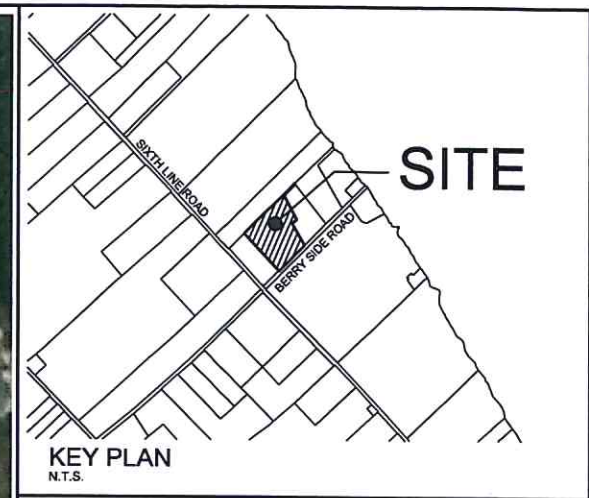


M:\201\3113035\CAD\Planning\Figures\113035-SEV-revised.dwg, SEV1, Dec 11, 2015 - 10:22am, mostad



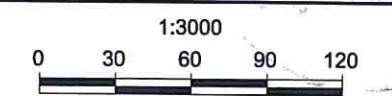
SEVERANCE APPLICATION

LOT LINE ADJUSTMENT/
LOT ADDITION

2110 SIXTH LINE ROAD

PART OF LOT 21,
CONCESSION 7
PART 1 PLAN 4R-15280
GEOGRAPHIC TOWNSHIP OF
KANATA
CITY OF OTTAWA

Committee
of Adjustment
MAY 02 2017



1.	ISSUED FOR SEVERANCE APPLICATION	11/12/2015	SL
No.	REVISION	DATE	BY

 NOVATECH ENGINEERING CONSULTANTS LTD. SURVEYORS & PLANNERS Suite 200, 240 Michael Cowpland Drive Ottawa, Ontario, Canada K2M 1P5 Telephone: (613) 254-9643 Facsimile: (613) 254-3867 Email: novatech@novatech-eng.com	ISSUED
	DECEMBER 2015
	PROJECT No. 113035
DRAWING No. 113035-SEV1	

PLAN OF SURVEY OF
PART LOT 21
CONCESSION 7
 Geographic Township of March
 CITY OF OTTAWA

SCALE 1 : 1250 METRES



G. A. SMITH SURVEYING LTD.

DISTANCES AND COORDINATES SHOWN ON THIS PLAN ARE IN METRES AND CAN BE CONVERTED TO FEET BY DIVIDING BY 0.3048

DISTANCES ARE GROUND AND CAN BE CONVERTED TO GRID BY MULTIPLYING BY THE COMBINED SCALE FACTOR OF _____

BEARINGS ARE MTM GRID, DERIVED FROM OBSERVED REFERENCE POINTS A & B, BY REAL TIME NETWORK (RTN) OBSERVATIONS, MTM ZONE 9 NAD83 (CSRS) (1997)

FOR BEARING COMPARISONS A ROTATION OF _____ CLOCKWISE WAS APPLIED TO BEARINGS ON PLANS _____ TO CONVERT TO GRID BEARINGS.

SCHEDULE			
PART	LOT	CONCESSION	PIN
1	PART OF 21	7	PART OF 04528-0186 (LT)
2			PART OF 04528-0186 (LT)

PARTS 1 AND 2 COMPRISE ALL OF PIN 04528-0186(LT)

INTEGRATION DATA

OBSERVED REFERENCE POINTS (ORP'S) DERIVED FROM REAL TIME NETWORK OBSERVATIONS (RTN) AND ARE REFERRED TO MTM ZONE 9 NAD83 (CSRS) (1997) COORDINATES COMPLY WITH RURAL ACCURACY PER SEC.14 (2) OF O. REG. 216/10

POINT ID	NORTHING	EASTING
ORP A	-----	-----
ORP B	-----	-----

COORDINATES CANNOT, IN THEMSELVES, BE USED TO RE-ESTABLISH CORNERS OR BOUNDARIES SHOWN ON THIS PLAN

PLAN 4R-
 RECEIVED AND DEPOSITED

DATE

REPRESENTATIVE FOR
 LAND REGISTRAR FOR
 THE LAND TITLES DIVISION
 OF OTTAWA (4)

I REQUIRE THIS PLAN TO BE
 DEPOSITED UNDER THE LAND
 TITLES ACT.

DATED

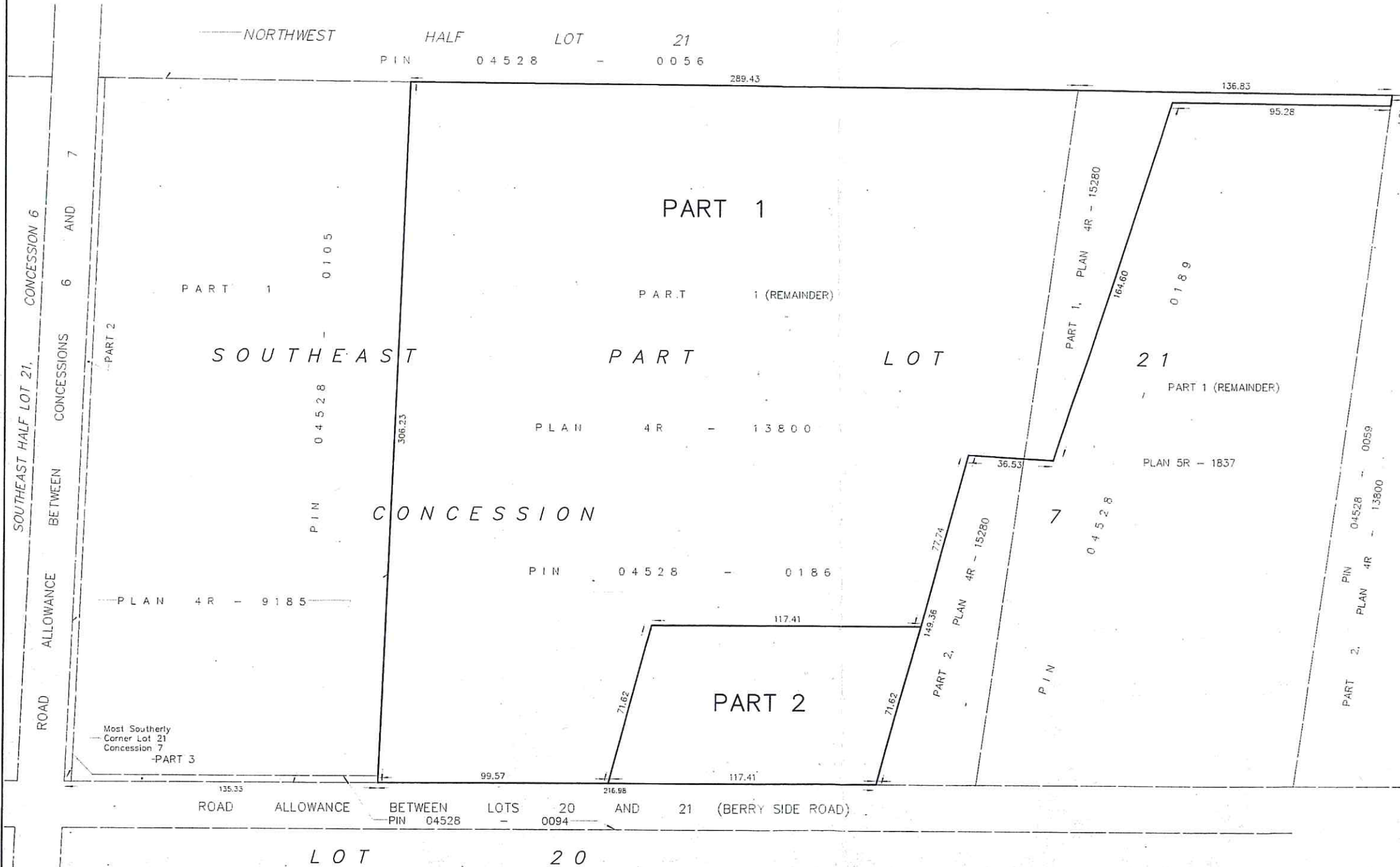
G. A. SMITH
 ONTARIO LAND SURVEYOR

SURVEYOR'S CERTIFICATE

- I CERTIFY THAT :
- THIS SURVEY AND PLAN ARE CORRECT AND IN ACCORDANCE WITH THE SURVEYS ACT, THE SURVEYORS ACT, THE LAND TITLES ACT AND THE REGULATIONS MADE UNDER THEM.
 - THE SURVEY WAS COMPLETED ON

DATE

G. A. SMITH
 ONTARIO LAND SURVEYOR



LEGEND & NOTES

- - MONUMENT FOUND
- - MONUMENT SET
- IB - IRON BAR
- SIB - STANDARD IRON BAR
- SSIB - SHORT STANDARD IRON BAR
- RIB - ROUND IRON BAR
- CP - CONCRETE PIN
- (WT) - WITNESS
- (OU) - ORIGIN UNKNOWN
- CFN - CONCRETE FOUNDATION NOTED
- UP - UTILITY POLE
- OHW - OVERHEAD WIRES

SSIB'S HAVE BEEN SET DUE TO INSUFFICIENT OVERBURDEN

G.A. SMITH SURVEYING LTD.
 ONTARIO LAND SURVEYOR
 CARLETON PLACE, ONTARIO
 (613) 253 - 6000 Fax (613) 253 - 6001

DRAWN : R. W. CHECKED : G.A.S.

REFERENCE No. : 15-4149 DRAFT R PLAN

