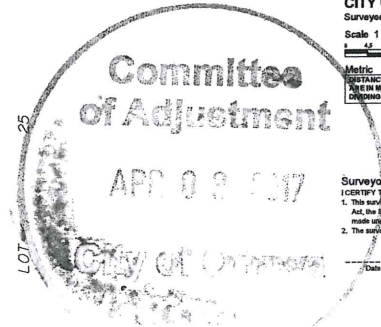


PLAN 4R- RECEIVED AND DEPOSITED DATE: \_\_\_\_\_ DATE: \_\_\_\_\_  
 V. ANDREW SHULP  
 ONTARIO LAND SURVEYOR  
 REPRESENTATIVE FOR THE LAND TITLES DIVISION OF OTTAWA-CARLETON NO. 4.

SCHEDULE			
AREA (B/L)	PART	LOT	CONCESSION
481.1	1	PART OF 5	3 (OTTAWA FRONT)
585.1	2		ALL OF 6444-0272

**DRAFT PLAN OF SURVEY OF PART OF LOT 5 CONCESSION 3 ( OTTAWA FRONT ) Geographic Township of Gloucester CITY OF OTTAWA**  
 Surveyed by Annis, O'Sullivan, Vollebek Ltd.

Scale 1 : 150  
 Metric DISTANCES AND COORDINATES SHOWN ON THIS PLAN ARE IN METRES AND CAN BE CONVERTED TO FEET BY DIVIDING BY 0.3048.



**Surveyor's Certificate**  
 I CERTIFY THAT:  
 1. This survey and plan are correct and in accordance with the Survey Act, the Surveyors Act and the Land Titles Act and the regulations made under them.  
 2. The survey was completed on the \_\_\_ day of \_\_\_\_\_ 2017.  
 Date: \_\_\_\_\_  
 V. Andrew Shulp  
 Ontario Land Surveyor

- Notes & Legend**
- Denotes Survey Monument Planted
  - Denotes Survey Monument Found
  - SS Standard Iron Bar
  - SSB Short Standard Iron Bar
  - IB Iron Bar
  - WTTT Witness
  - Mess. Measured
  - (ADD) Annis, O'Sullivan, Vollebek Ltd.
  - P1 Registered Plan 486-514
  - P2 Registered Plan 486-514
  - P3 Plan 48-14730
  - P4 Plan 48-12077
  - Overhead Wires
  - Ball Terminal Box
  - Cable Terminal Box
  - Utility Pole
  - Air Conditioner
  - Chain Link Fence
  - Board Fence
  - Brick Building Wall
  - Centreline
  - Edge of Asphalt
  - Gas Meter

Distances shown on this plan are ground distances and can be converted to grid distances by multiplying by the combined scale factor of 0.99993.  
 Bearings are grid, derived from Can-Net 2016 Real Time Network GPS observations on reference points A and B, shown hereon, having bearings of N 22°32'07" W and are referenced to Specified Control Points 0191900194 and 01919044761, MTM Zone 8 ( 76°30' West Longitude ) MAD-43 (original).  
 For bearing comparisons, a rotation of 0°00'00" counter-clockwise was applied to bearings on plan.  
 For comparison purposes, bearings shown on Plans P1, P2, P3 and P4 are astronomical bearings.  
 Coordinates are derived from Can-Net 2016 Real Time Network GPS observations referenced to Specified Control Points 0191900194 and 01919044761, MTM Zone 9 (76°30' West Longitude) MAD-43 (original).  
 Coordinate values are to urban accuracy in accordance with O. Reg. 216/09.  
 - 0191900194 Northing 5046910.16 Easting 324738.56  
 - 01919044761 Northing 5025176.12 Easting 374261.11  
 - Point A Northing Easting  
 - Point B Northing Easting  
 Caution: Coordinates rounded, in themselves, be used to re-establish corners or boundaries shown on this plan.

