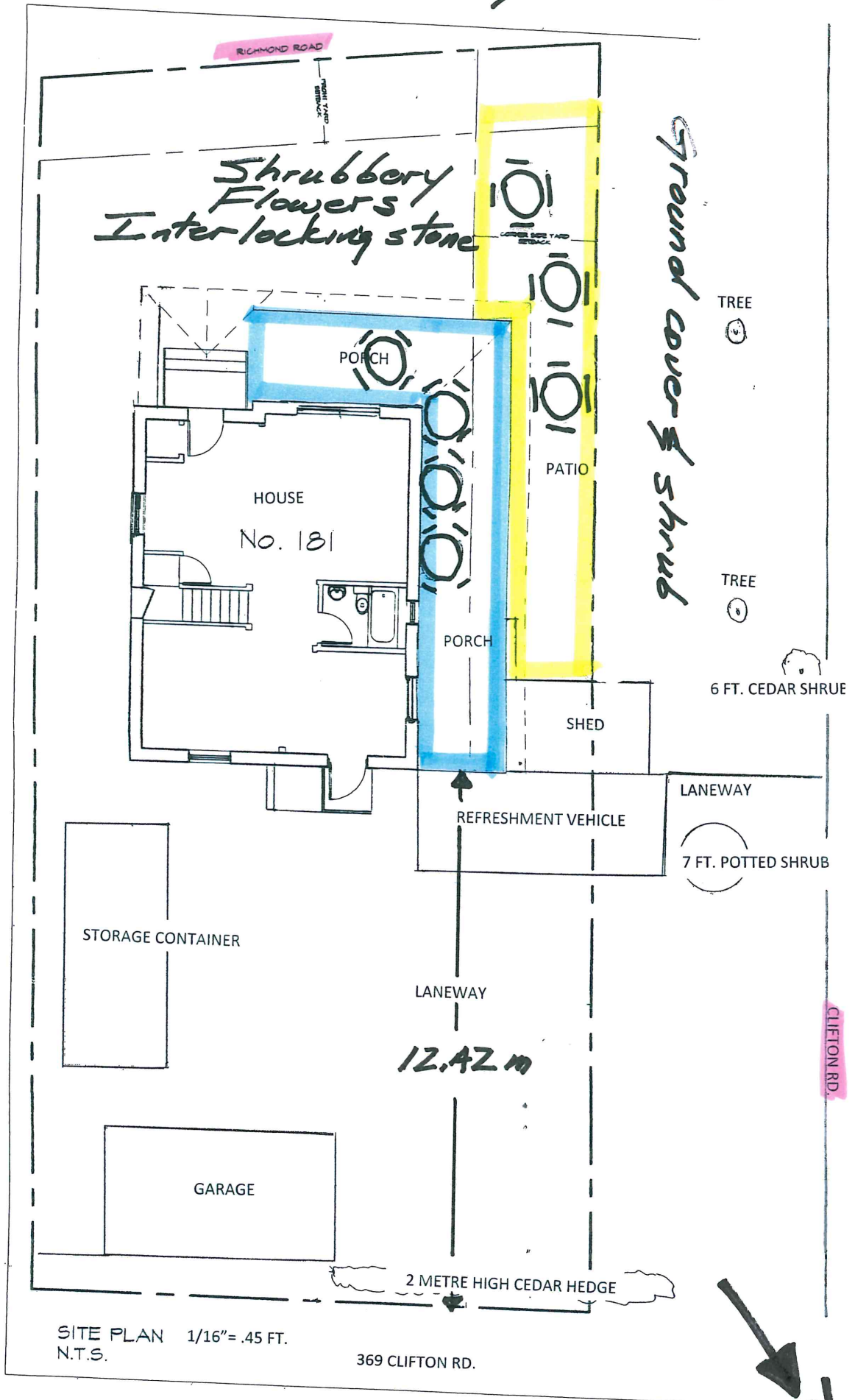


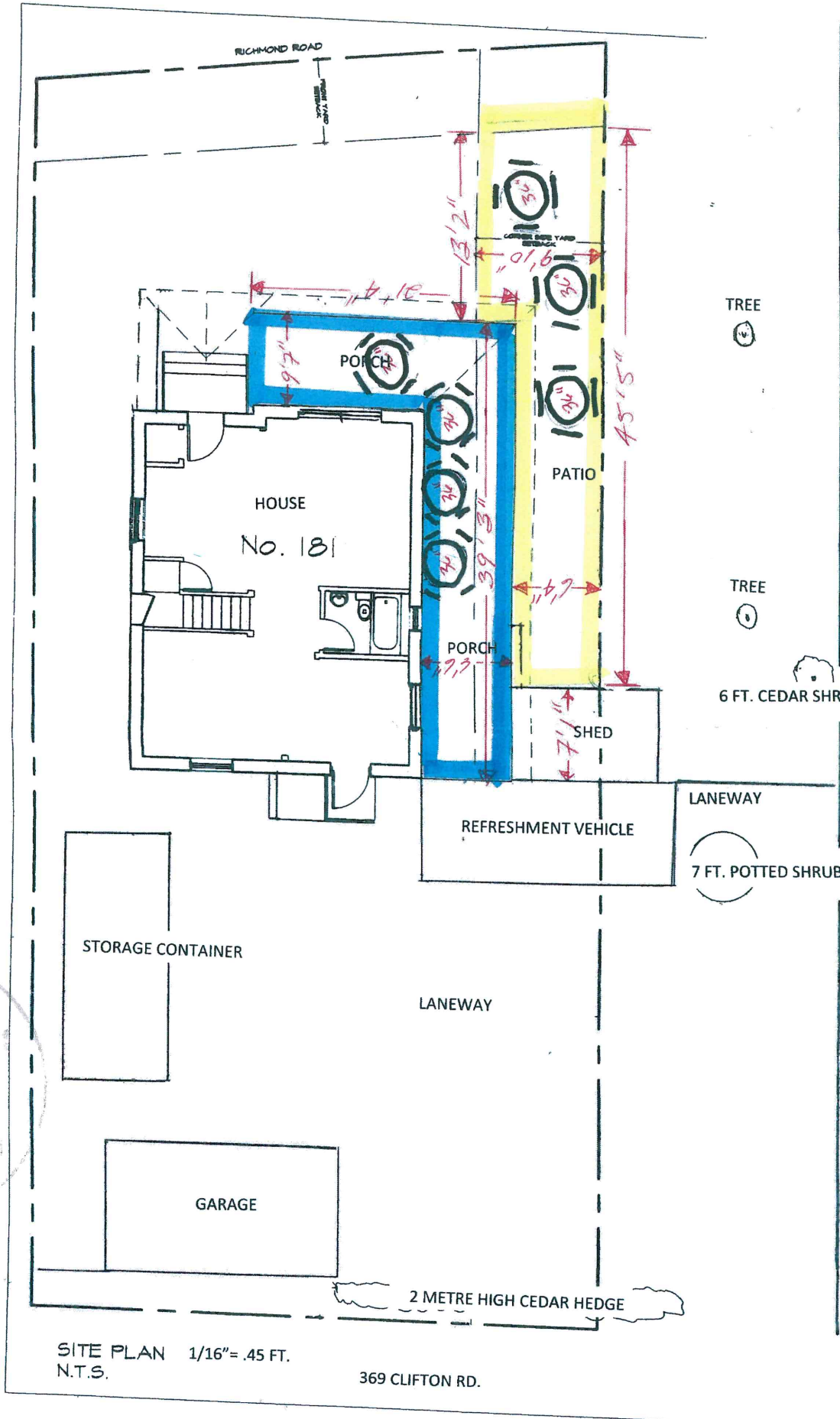
Great Canadian Super Store



Committee of Adjustment
JAN 25 2017
City of Ottawa

SITE PLAN 1/16" = .45 FT.
N.T.S.

369 CLIFTON RD.



Committee
of Adjustment
FEB 06 2017
City of Vancouver

SITE PLAN 1/16" = .45 FT.
N.T.S.

369 CLIFTON RD.