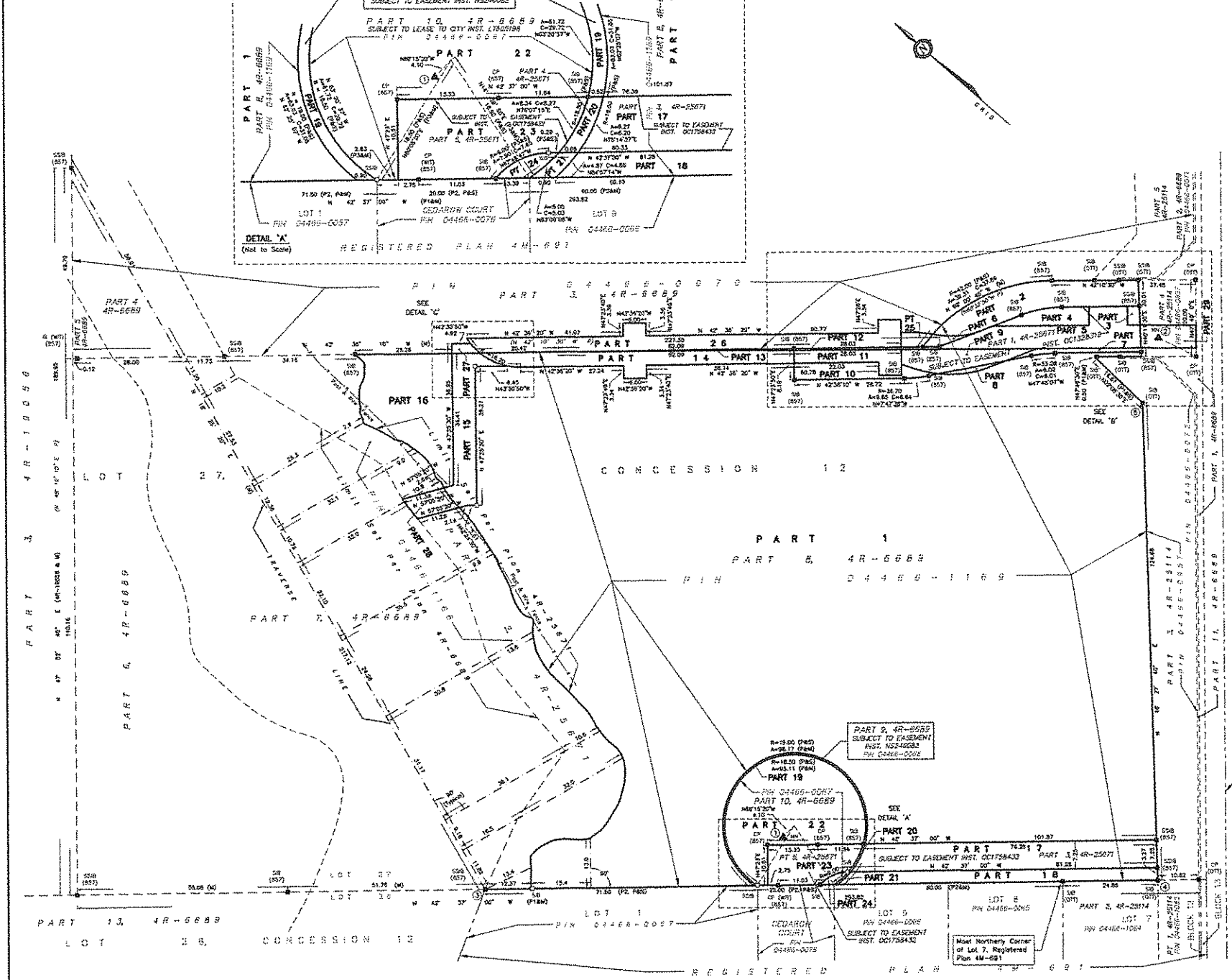


METRIC DISTANCES AND COORDINATES SHOWN ON THIS PLAN ARE IN METRES AND CAN BE CONVERTED TO FEET BY DIVIDING BY 0.3048



I REQUIRE THIS PLAN TO BE DEPOSITED UNDER THE LAND TITLES ACT.

DATE _____

PLAN 4R- _____

RECEIVED AND DEPOSITED DATE _____

LAND REGISTRAR FOR THE LAND TITLES DIVISION OF OTTAWA - CARLETON (N° 4)

JOHN H. GUTS, O.L.S.

SCHEDULE

PART	LOT	CONCESSION	RIN
1			
2			
3			
4			
5			
6			
7			
8			
9			
10			
11			
12			
13			
14			
15			
16			
17			
18			
19			
20			
21			
22			
23			
24			
25			
26			
27			
28			

PARTS 3, 4, 5, 7, 9, 10, 11 & 12 - SUBJECT TO EASEMENT INST. OC1328519

PARTS 17 & 23 - SUBJECT TO EASEMENT INST. OC1758432

PARTS 15, 20 & 21 - SUBJECT TO EASEMENT INST. NS246062.

PLAN OF SURVEY OF PART OF LOT 27 CONCESSION 12 GEOGRAPHIC TOWNSHIP OF GOULBOURN Now CITY OF OTTAWA

SCALE 1 : 500

FAIRHALL, MOFFATT & WOODLAND LIMITED

ONARIO LAND SURVEYORS

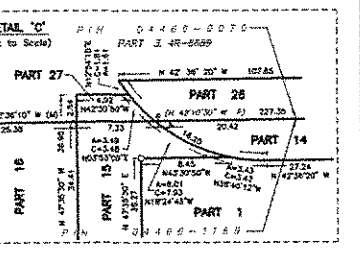
NOTES

1. BEARINGS AND DISTANCES DERIVED FROM OBSERVED REFERENCE POINTS (1) AND (2) BY REAL TIME NETWORK OBSERVATIONS AND ARE REFERRED TO THE CENTRAL MERIDIAN, 78°30'W LONGITUDE WITH NAD83 ZONE 8, NAD83 ORIGINAL.

2. DISTANCES ARE GROUND AND CAN BE CONVERTED TO GRID BY MULTIPLYING BY THE COMBINED SCALE FACTOR 0.999915.

LEGEND

- (S) - SURVEY MONUMENT SET
- (SM) - SURVEY MONUMENT FOUND
- (SB) - IRON BAR
- (SDB) - STANDARD IRON BAR
- (SSB) - SHORT STANDARD IRON BAR
- (C) - CONCRETE PIN
- (M) - MAGNETIC NAIL
- (P) - PLAN 4R-8909
- (P1) - PLAN 4R-25114
- (P2) - REGISTERED PLAN 4R-891
- (P3) - PLAN 4R-25071
- (S1) - SET
- (M) - MEASURED
- (DET) - FAIRHALL, MOFFATT & WOODLAND LIMITED, O.L.S.
- (CITY) - CITY OF OTTAWA
- (WTS) - WITNESS
- (ORP) - OBSERVED REFERENCE POINT
- (PIN) - PROPERTY IDENTIFIER NUMBER
- (P) - PART



COORDINATES WERE DERIVED FROM REAL TIME NETWORK OBSERVATIONS (GNSS) WITH ZONE 8, NAD83 ORIGINAL. COORDINATES HAVE BEEN DETERMINED TO AN UTM ACCURACY IN ACCORDANCE WITH SECTION 14 (2) OF OREG 216/10.

POINT ID	NORTHING	EASTING
1 (ORP)	5015909.925	326625.527
2 (ORP)	5015923.819	326732.381
3	5015929.214	326722.619
4	5015929.432	326724.374
5	5015915.332	326714.756

COORDINATES CANNOT BE THEMSELVES BE USED TO RE-ESTABLISH CORNERS OR BEARINGS SHOWN ON THIS PLAN.

SURVEYOR'S CERTIFICATE

I CERTIFY THAT:

1. THIS SURVEY AND PLAN ARE CORRECT AND IN ACCORDANCE WITH THE SURVEYS ACT, THE SURVEYORS ACT, THE LAND TITLES ACT AND THE REGULATIONS MADE UNDER THEM.

2. THE SURVEY WAS COMPLETED ON _____

DATE _____

JOHN H. GUTS, O.L.S.

ONARIO LAND SURVEYOR

Fairhall Moffatt & Woodland

Surveying and Land Information Services

1000 SHEPPARD AVENUE EAST, SUITE 200, SCARBOROUGH, ONTARIO M1S 1W7

TEL: (416) 291-2200 FAX: (416) 291-1900

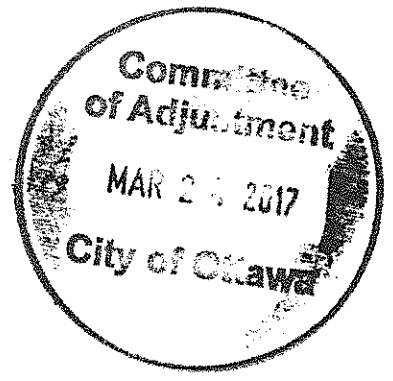
RIN NO. W 30000

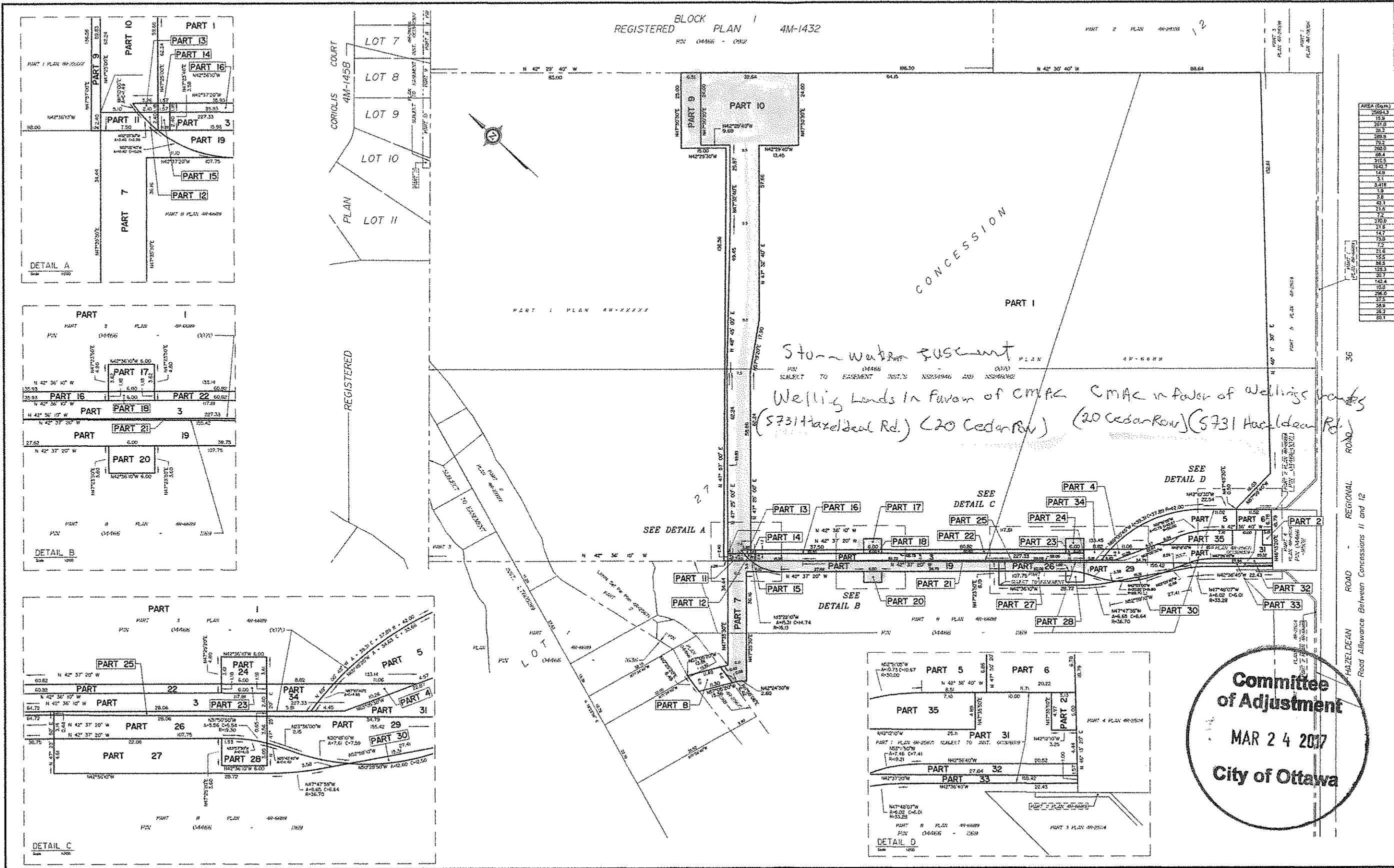
© 2008/11, N 5015966

REGISTERED PLAN (1605)-12 GOULBOURN (27)

1/2017-01/2017-01-01

RP2809-RV2010 (1)





REGISTERED BLOCK PLAN 1 4M-1432
PIN 04466 - 0912

PART 2 PLAN 4M-1432 12

REQUIRE THIS PLAN TO BE DEPOSITED UNDER THE LAND TITLES ACT.
DATE: _____
RECEIVED AND DEPOSITED DATE: _____
PLAN 4R-
REPRESENTATIVE FOR LAND REGISTRAR FOR THE LAND TITLES DIVISION OF OTTAWA-CARLETON, O. 4.

AREA (Sq.M)	PART	LOT	CONCESSION	PIN	
2684.3	1			Part of 04466-0070	
15.9	2			Part of 04466-1160	
251.0	3			Part of 04466-2070	
25.2	4				
289.9	5			Part of 04466-1160	
75.2	6				
280.0	7			Part of 04466-1160	
66.4	8				
315.5	9				
164.7	10				
14.9	11				
3.1	12				
3.416	13				
1.9	14				
3.8	15				
43.1	16				
21.6	17				
7.2	18				
270.0	19				
21.8	20				
14.7	21				
73.0	22				
7.2	23				
21.8	24				
15.5	25				
46.8	26				
129.3	27				
20.7	28				
142.4	29				
10.0	30				
28.0	31				
37.2	32				
38.9	33				
25.7	34				
60.1	35				Part of 04466-0070

PARTS 1, 3 & 16 (BOTH INCLUSIVE), 22, 23, 24 AND 34 ARE SUBJECT TO EASEMENT REG. 0 AND 21, 4646 & 16240082
PARTS 2, 25 TO 29 (BOTH INCLUSIVE), 31, 32, 33 AND 35 ARE SUBJECT TO EASEMENT REG. 001353311

DRAFT PLAN OF SURVEY OF

PART OF LOT 27 CONCESSION 12
Geographic Township of Goulbourn
CITY OF OTTAWA
Surveyed by Annis, O'Sullivan, Vollebek Ltd.

Scale 1 : 500

Metric
DISTANCES SHOWN ON THE PLAN ARE IN METRES AND CAN BE CONVERTED TO FEET BY DIVIDING BY 0.3048

Surveyor's Certificate

- This survey and plan are correct and in accordance with the Survey Act, the Surveyors Act and the Land Titles Act and the regulations made under them.
- The survey was completed on the _____ day of _____ 2017.

Date: _____
Richard R. Gauthier
Ontario Land Surveyor

Notes & Legend

- Denotes Survey Monument Planted
- SIB - Standard Iron Bar
- SIBB - Short Standard Iron Bar
- IB - Iron Bar
- W - Witness
- (ADG) - Annis, O'Sullivan, Vollebek Ltd.
- Mess. - Measured
- (P1) - Plan 4R-25114
- (P2) - Plan 4R-25271
- (P3) - Plan 4R-6569
- (P4) - Plan 4R-1432

Distances shown on this plan are ground distances and can be converted to grid distances by multiplying by the combined scale factor of 0.999900.

Bearings are grid, derived from CanMet 3.0 Real Time Network GPS observations on reference points A and B, shown herein, having a bearing of 146° 11' 30" E and are referenced to Specified Control Points 0191972025 and 0191972023, NAD 83, Zone 9 (78° 30' West Longitude) NAD 83 (original).

For bearing comparisons, a notation of 0° 20' 30" south-northwest was applied to bearings on Plan (P3).

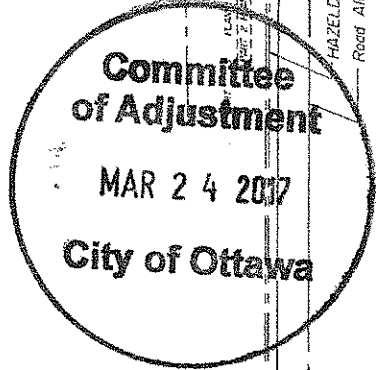
Coordinates are derived from CanMet 3.0 Real Time Network GPS observations, referenced to Specified Control Points 0191972025 and 0191972023, NAD 83, Zone 9 (78° 30' West Longitude) NAD 83 (original).

Coordinate values are to urban accuracy in accordance with O. Reg. 216/10.

0191972025	Northing	5015316.63	Eastings	369806.64
0191972023	Northing	5013536.21	Eastings	348275.32
Point A	Northing	5015846.53	Eastings	350746.53
Point B	Northing	5016031.04	Eastings	350844.30

Caution: Coordinates carried, in themselves, be used to re-establish corners or boundaries shown on this plan.

ANNIS, O'SULLIVAN, VOLLEBEK LTD.
14 Concession 5, Suite 200
Nepean, ON K2E 7G6
Phone: (613) 277-0850 Fax: (613) 277-1076
Email: info@anniso.com



REGISTERED BLOCK PLAN 1 4M-1432
 PLAN 4M-1432
 PIN 04466 - 0902

REQUIRE THIS PLAN TO BE DEPOSITED UNDER THE LAND TITLES ACT.
 DATE: _____
 RECEIVED AND DEPOSITED DATE: _____
 REPRESENTATIVE FOR LAND REGISTRY FOR THE LAND TITLES DIVISION OF OTTAWA-CARLETON NO. 4.
 RICHARD R. GAUTIER
 ONTARIO LAND SURVEYOR

AREA (sq.m)	PART	LOT	CONCESSION	PIN
2566.43	1			Part of 04466-0070
15.9	2			Part of 04466-1199
251.0	3			Part of 04466-0270
28.2	4			Part of 04466-1199
289.8	5			Part of 04466-0270
29.2	6			Part of 04466-1199
250.0	7			Part of 04466-0270
85.4	8			Part of 04466-1199
312.5	9			Part of 04466-0270
1942.1	10			Part of 04466-0270
14.9	11			Part of 04466-1199
43.1	12			Part of 04466-0270
215.1	13			Part of 04466-1199
7.2	14			Part of 04466-0270
130.0	15			Part of 04466-1199
276.0	16			Part of 04466-0270
21.8	17			Part of 04466-1199
14.7	18			Part of 04466-0270
17.2	19			Part of 04466-1199
15.5	20			Part of 04466-0270
88.2	21			Part of 04466-1199
20.7	22			Part of 04466-0270
142.4	23			Part of 04466-1199
180.0	24			Part of 04466-0270
286.0	25			Part of 04466-1199
37.5	26			Part of 04466-0270
38.9	27			Part of 04466-1199
26.3	28			Part of 04466-0270
89.1	29			Part of 04466-1199

DRAFT PLAN OF SURVEY OF
 PART OF LOT 27
 CONCESSION 12
 Geographic Township of Goulbourn
 CITY OF OTTAWA
 Surveyed by Annis, O'Sullivan, Vollebek Ltd.

Scale 1 : 500

Metric
 DISTANCES SHOWN ON THIS PLAN ARE IN METRES AND CAN BE CONVERTED TO FEET BY DIVIDING BY 3.048

Surveyor's Certificate
 I CERTIFY THAT
 1. This survey and plan are correct and in accordance with the Survey Act and the Land Titles Act and the regulations made thereunder.
 2. The survey was completed on the ____ day of _____, 2017.

Date: _____
 Richard R. Gautier
 Ontario Land Surveyor

- Notes & Legend
- Denticles Survey Monument Planned
 - Survey Monument Found
 - S— Standard Iron Bar
 - SB— Short Standard Iron Bar
 - IB— Iron Bar
 - WB— Wood
 - (WT)— Witness
 - (AO)— Annis, O'Sullivan, Vollebek Ltd.
 - M— Measured
 - (P1)— Plan 4R-05114
 - (P2)— Plan 4R-05671
 - (P3)— Plan 4R-0029
 - (P4)— Plan 4R-1432

Distances shown on this plan are ground distances and can be converted to grid distances by multiplying by the combined scale factor of 0.999900.

Bearing and grid derived from CanMet 2.5 Real Time Network GPS observations on reference points A and B shown herein, having a bearing of 118°11'20"E and are referred to Specified Control Points 01918750702 and 01918750703 and are referred to Specified Control Points 01918750702 and 01918750703, MTL Zone 9 (78°30' West Longitude) NAD-83 (original).

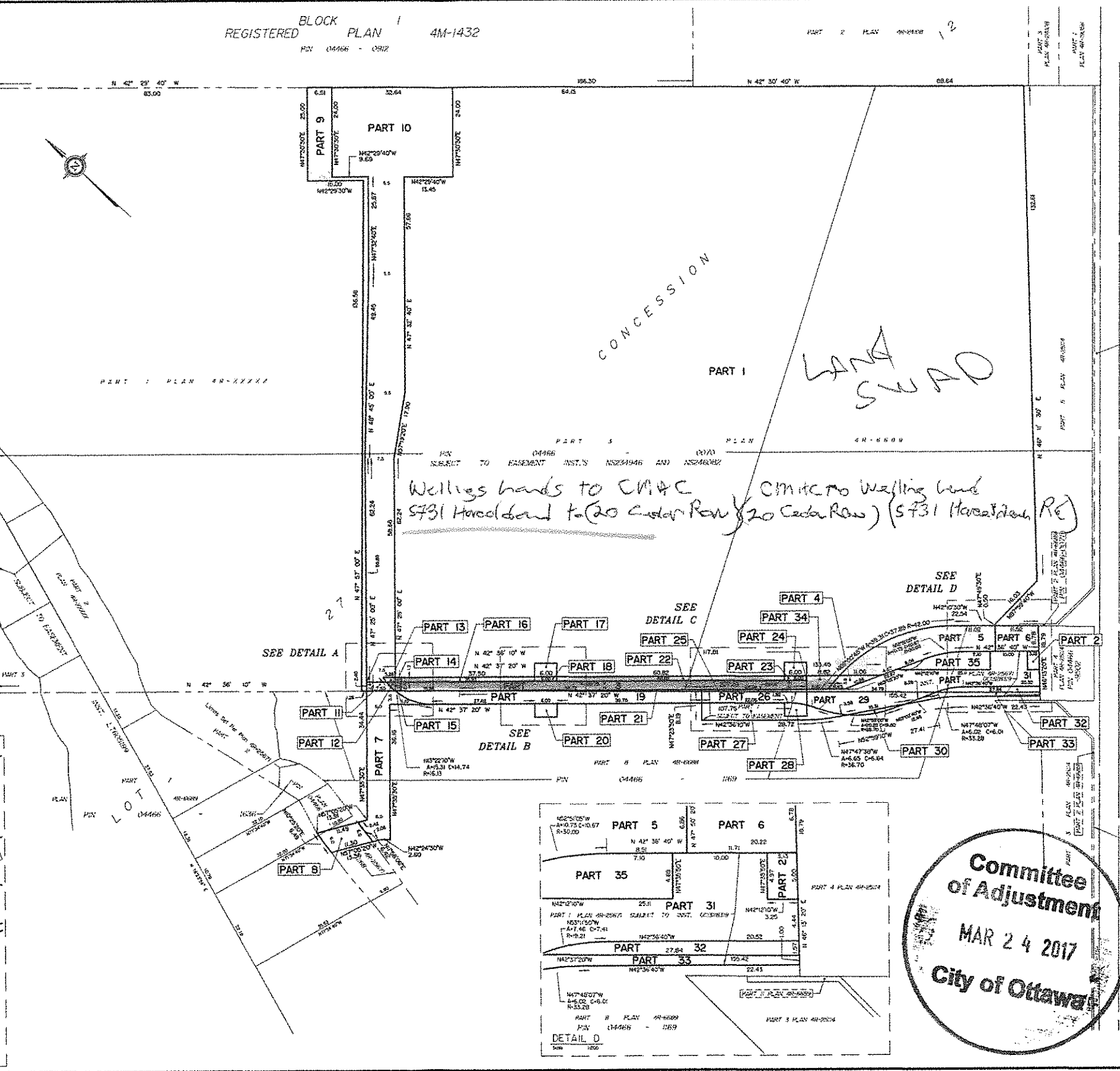
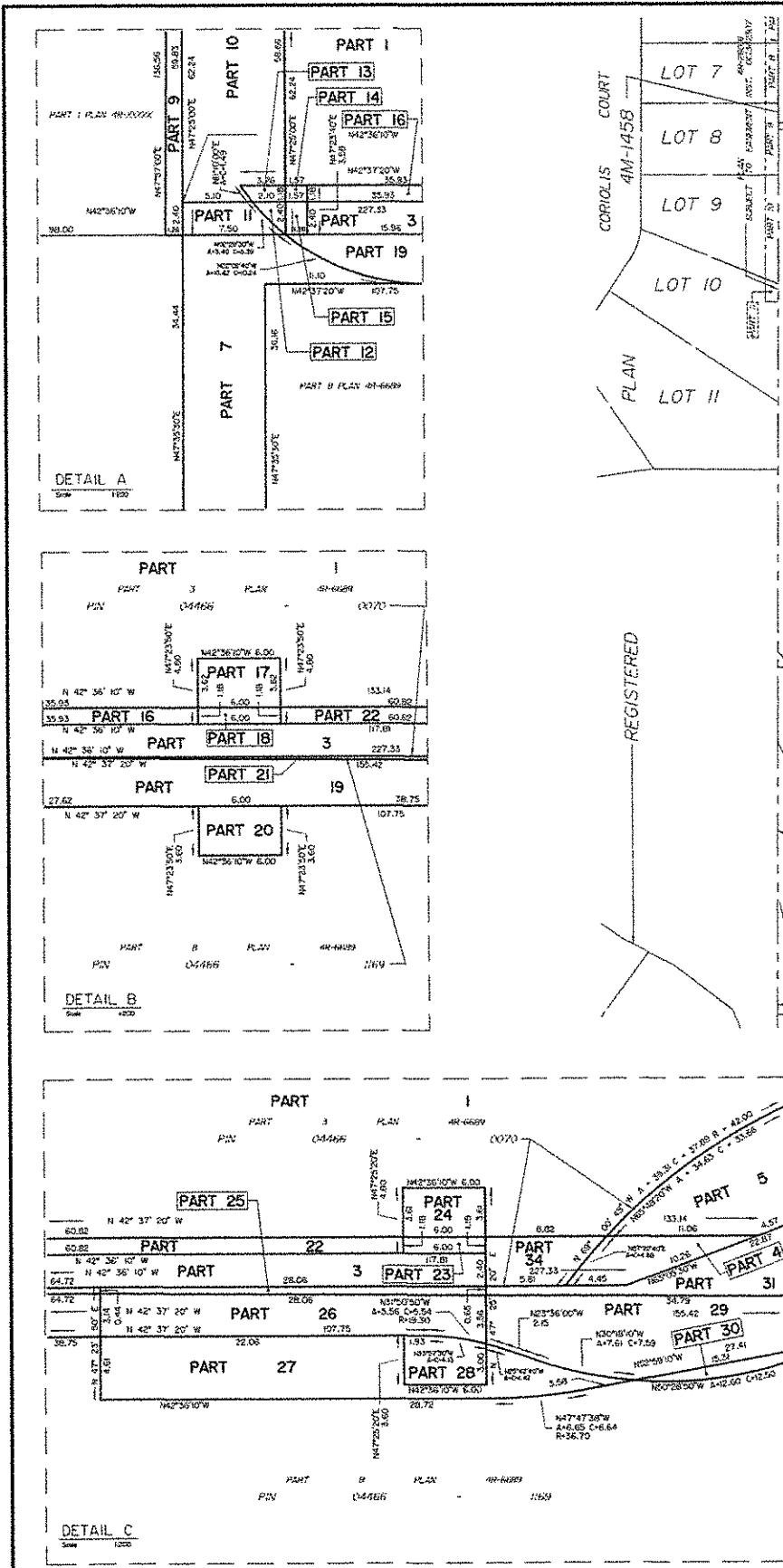
For bearing comparison, a rotation of 0°25'25" counter-clockwise was applied to bearings on Plan (P3).

Coordinates are derived from CanMet 3.0 Real Time Network GPS observations, referenced to Specified Control Points 01918750702 and 01918750703, MTL Zone 9 (78°30' West Longitude) NAD-83 (original).
 Coordinate values are to urban accuracy in accordance with O. Reg. 216/10.

• 01918750702 Northing 5015616.33 Easting 356265.84
 • 01918770023 Northing 5013038.21 Easting 348175.92
 • Point A Northing 5015045.83 Easting 350742.63
 • Point B Northing 5018037.64 Easting 350844.30

Caution: Coordinates control, in the form shown, is to be used to re-establish correct boundaries shown on this plan.

ANNIS, O'SULLIVAN, VOLLEBEK LTD.
 11 Concession One, Suite 500
 Newburg, Ont. N0E 1S0
 Phone (519) 727-0300 / Fax (519) 727-1075
 Email: annis@anniso.com
 Land Surveyors Reg. No. 62828, 62829, 62830, 62831, 62832, 62833, 62834, 62835, 62836, 62837, 62838, 62839, 62840, 62841, 62842, 62843, 62844, 62845, 62846, 62847, 62848, 62849, 62850, 62851, 62852, 62853, 62854, 62855, 62856, 62857, 62858, 62859, 62860, 62861, 62862, 62863, 62864, 62865, 62866, 62867, 62868, 62869, 62870, 62871, 62872, 62873, 62874, 62875, 62876, 62877, 62878, 62879, 62880, 62881, 62882, 62883, 62884, 62885, 62886, 62887, 62888, 62889, 62890, 62891, 62892, 62893, 62894, 62895, 62896, 62897, 62898, 62899, 62900, 62901, 62902, 62903, 62904, 62905, 62906, 62907, 62908, 62909, 62910, 62911, 62912, 62913, 62914, 62915, 62916, 62917, 62918, 62919, 62920, 62921, 62922, 62923, 62924, 62925, 62926, 62927, 62928, 62929, 62930, 62931, 62932, 62933, 62934, 62935, 62936, 62937, 62938, 62939, 62940, 62941, 62942, 62943, 62944, 62945, 62946, 62947, 62948, 62949, 62950, 62951, 62952, 62953, 62954, 62955, 62956, 62957, 62958, 62959, 62960, 62961, 62962, 62963, 62964, 62965, 62966, 62967, 62968, 62969, 62970, 62971, 62972, 62973, 62974, 62975, 62976, 62977, 62978, 62979, 62980, 62981, 62982, 62983, 62984, 62985, 62986, 62987, 62988, 62989, 62990, 62991, 62992, 62993, 62994, 62995, 62996, 62997, 62998, 62999, 63000



Committee of Adjustment
 MAR 24 2017
 City of Ottawa