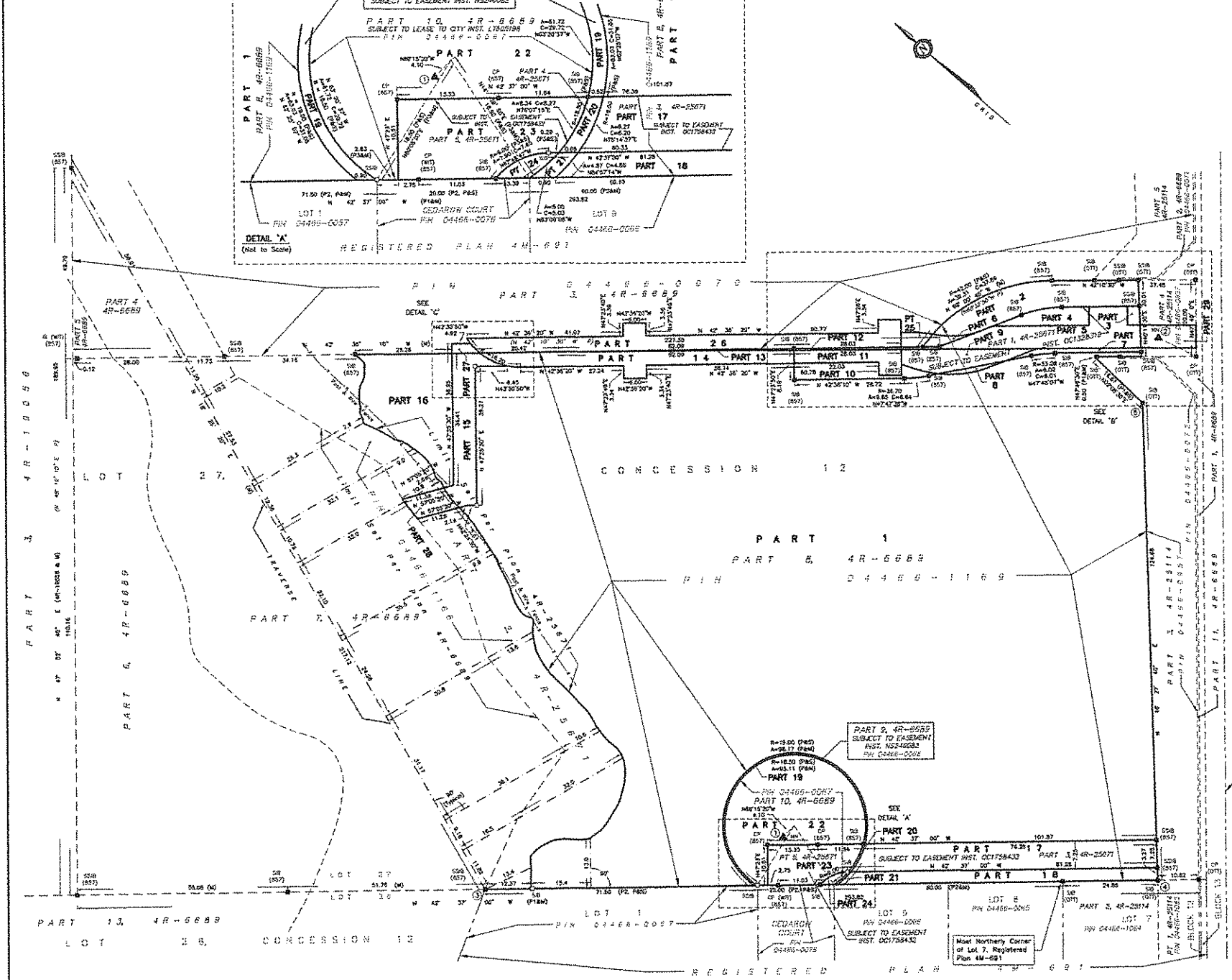


METRIC DISTANCES AND COORDINATES SHOWN ON THIS PLAN ARE IN METRES AND CAN BE CONVERTED TO FEET BY DIVIDING BY 0.3048



I REQUIRE THIS PLAN TO BE DEPOSITED UNDER THE LAND TITLES ACT.

DATE \_\_\_\_\_

PLAN 4R- \_\_\_\_\_

RECEIVED AND DEPOSITED DATE \_\_\_\_\_

LAND REGISTRAR FOR THE LAND TITLES DIVISION OF OTTAWA - CARLETON (N° 4)

JOHN H. GUTS, O.L.S.

SCHEDULE

PART	LOT	CONCESSION	RIN
1			
2			
3			
4			
5			
6			
7			
8			
9			
10			
11			
12			
13			
14			
15			
16			
17			
18			
19			
20			
21			
22			
23			
24			
25			
26			
27			
28			

PARTS 3, 4, 5, 7, 9, 10, 11 & 12 - SUBJECT TO EASEMENT INST. OC1328519

PARTS 17 & 23 - SUBJECT TO EASEMENT INST. OC1758432

PARTS 15, 20 & 21 - SUBJECT TO EASEMENT INST. NS246062.

PLAN OF SURVEY OF PART OF LOT 27 CONCESSION 12 GEOGRAPHIC TOWNSHIP OF GOULBOURN Now CITY OF OTTAWA

SCALE 1 : 500

FAIRHALL, MOFFATT & WOODLAND LIMITED

OTAWA LAND SURVEYORS

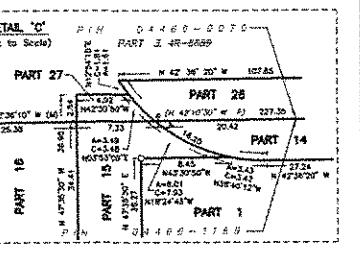
NOTES

1. BEARINGS AND DISTANCES DERIVED FROM OBSERVED REFERENCE POINTS (1) AND (2) BY REAL TIME NETWORK OBSERVATIONS AND ARE REFERRED TO THE CENTRAL MERIDIAN, 78°30'W LONGITUDE WITH NAD83 ZONE 8, NAD83 ORIGINAL.

2. DISTANCES ARE GROUND AND CAN BE CONVERTED TO GRID BY MULTIPLYING BY THE COMBINED SCALE FACTOR 0.999915.

LEGEND

- (S) - SURVEY MONUMENT SET
- (M) - SURVEY MONUMENT FOUND
- (B) - BENCH MARK
- (SB) - STANDARD BENCH MARK
- (SSB) - SHORT STANDARD BENCH MARK
- (C) - CONCRETE PIN
- (M) - MAGNETIC NAIL
- (P) - PLAN 4R-8909
- (P1) - PLAN 4R-25114
- (P2) - REGISTERED PLAN 4R-891
- (P3) - PLAN 4R-25071
- (S) - SET
- (M) - MEASURED
- (SET) - FAIRHALL, MOFFATT & WOODLAND LIMITED, O.L.S.
- (CITY) - CITY OF OTTAWA
- (W) - WITNESS
- (OP) - OBSERVED REFERENCE POINT
- (P) - PROPERTY IDENTIFIER NUMBER
- (P) - PART



COORDINATES WERE DERIVED FROM REAL TIME NETWORK OBSERVATIONS (DINARTNET) WITH ZONE 8, NAD83 ORIGINAL. COORDINATES HAVE BEEN DETERMINED TO AN UTM/AZIMUTH ACCURACY IN ACCORDANCE WITH SECTION 14 (2) OF OREG 216/10.

POINT ID	NORTHING	EASTING
1 (OP)	5015909.925	320562.527
2 (OP)	5015923.819	320732.381
3	5015929.214	320226.819
4	5015929.432	320628.374
5	5015915.332	320716.756

COORDINATES CANNOT BE THEMSELVES BE USED TO RE-ESTABLISH CORNERS OR BEARINGS SHOWN ON THIS PLAN.

SURVEYOR'S CERTIFICATE

I CERTIFY THAT:

1. THIS SURVEY AND PLAN ARE CORRECT AND IN ACCORDANCE WITH THE SURVEYS ACT, THE SURVEYORS ACT, THE LAND TITLES ACT AND THE REGULATIONS MADE UNDER THEM.

2. THE SURVEY WAS COMPLETED ON \_\_\_\_\_

DATE \_\_\_\_\_

JOHN H. GUTS, O.L.S.

OTAWA LAND SURVEYOR

**Fairhall Moffatt & Woodland**

Surveying and Land Information Services

1000 SHEPPARD AVENUE EAST, SUITE 100, SCARBOROUGH, ONTARIO M1S 1W7

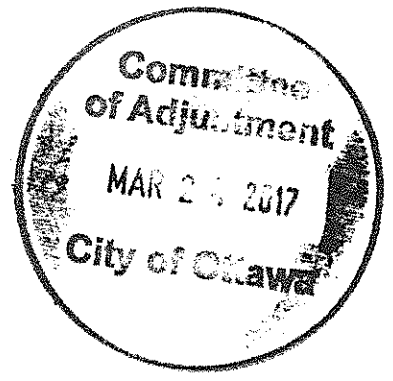
TEL: (416) 291-2200 FAX: (416) 291-1900

REG. NO. W 30000

© 2008/03, N 5015966

PROFESSIONAL REG. (1605)-12 GOULBOURN (27)

15/08/2017 09:20:00



REGISTERED BLOCK PLAN 1 4M-1432  
PIN 04466 - 1292

PLAN 4R-  
RECEIVED AND DEPOSITED  
DATE: \_\_\_\_\_  
DATE: \_\_\_\_\_

RICHARD R. GOURNIEK  
ONTARIO LAND SURVEYOR

REPRESENTATIVE FOR  
LAND REGISTRAR FOR THE  
LAND TITLES DIVISION OF  
OTTAWA-CARLETON NO. 4.

AREA (sq.m.)	PART	CONCESSION	PIN
2594.3	1		Part of 04466-0070
15.9	2		Part of 04466-1169
201.0	3		Part of 04466-0370
28.2	4		
269.9	5		Part of 04466-1169
73.2	6		
200.0	7		
68.4	8		Part of 04466-1168
315.5	9		
192.7	10		
14.8	11		
3.1	12		Part of 04466-0370
3.019	13		
1.9	14		
3.8	15		
43.1	16		
21.6	17		
7.2	18		
270.0	19		
15.9	20		
14.7	21		Part of 04466-1168
7.2	22		
13.8	23		
15.5	24		
96.5	25		
125.3	26		
30.7	27		
142.4	28		Part of 04466-1168
10.0	29		
29.0	30		
37.5	31		
38.9	32		
26.2	33		
65.1	34		Part of 04466-0370
65.1	35		Part of 04466-1168

**DRAFT PLAN OF SURVEY OF**

**PART OF LOT 27  
CONCESSION 12**  
Geographic Township of Goulbourn  
CITY OF OTTAWA  
Surveyed by Annis, O'Sullivan, Vollebek Ltd.

Scale 1:500

Metric  
DISTANCES SHOWN ON THIS PLAN ARE IN METRES AND  
CAN BE CONVERTED TO FEET BY DIVIDING BY 0.3048

Surveyor's Certificate  
I CERTIFY THAT:  
1. This survey and plan are correct and in accordance with the  
Surveyors Act, the Surveyors Act and the Land Titles Act and the  
regulations made under them.  
2. The survey was completed on the \_\_\_\_\_ day of \_\_\_\_\_ 2017.

- Notes & Legend
- Direction Survey Monument Planted
  - Survey Monument Found
  - SIB Standard Iron Bar
  - SIBS Sheet Standard Iron Bar
  - IB Iron Bar
  - W Witness
  - (AOC) Annis, O'Sullivan, Vollebek Ltd.
  - M&S Measurement
  - (P1) Plan 4R-25114
  - (P2) Plan 4R-25671
  - (P3) Plan 4R-4990
  - (P4) Plan 4R-1432

Distances shown on this plan are ground distances and can be converted to grid distances by multiplying by the combined scale factor of 0.9998020.

Bearings are grid, derived from Can-Hed 3.0 Real Time Network GPS observations on reference points A and B, shown hereon, having a bearing of N40°1'30"E and are referenced to Specified Control Points 01919750705 and 01919770223, MTD Zone 9 (76°30' West Longitude) NAD-83 (original).

For bearing comparisons, a relation of 0°26'30" around-azimuth was applied to bearings on Plan (P3).

Coordinates are derived from Can-Hed 3.0 Real Time Network GPS observations referenced to Specified Control Points 01919750705 and 01919770223, MTD Zone 9 (76°30' West Longitude) NAD-83 (original).

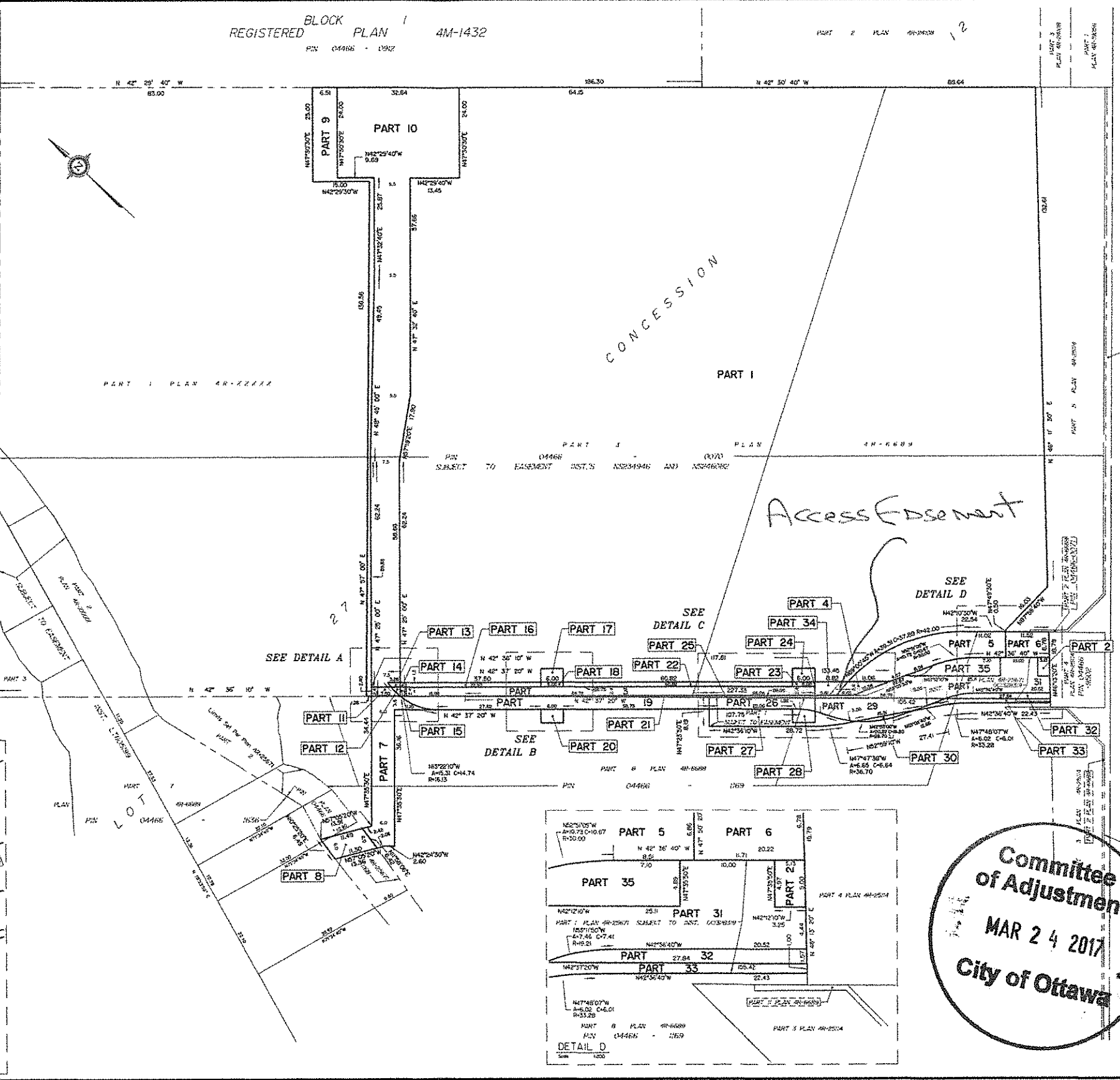
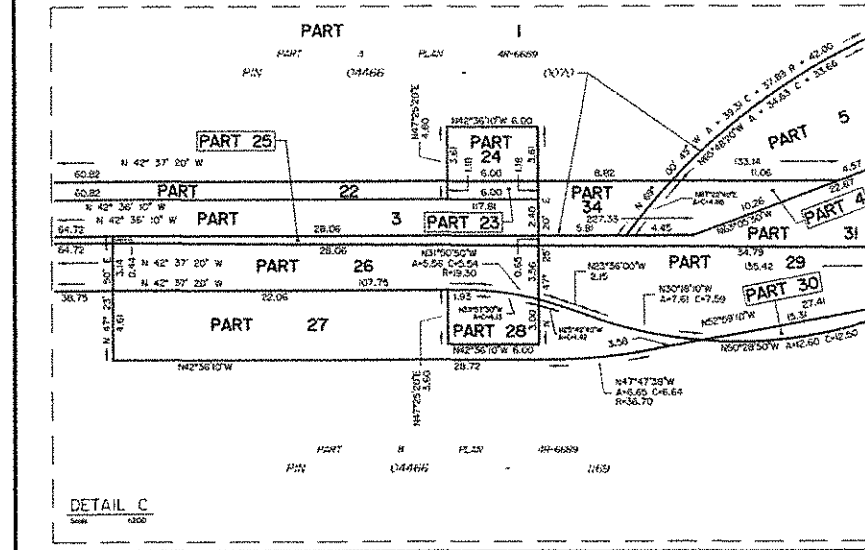
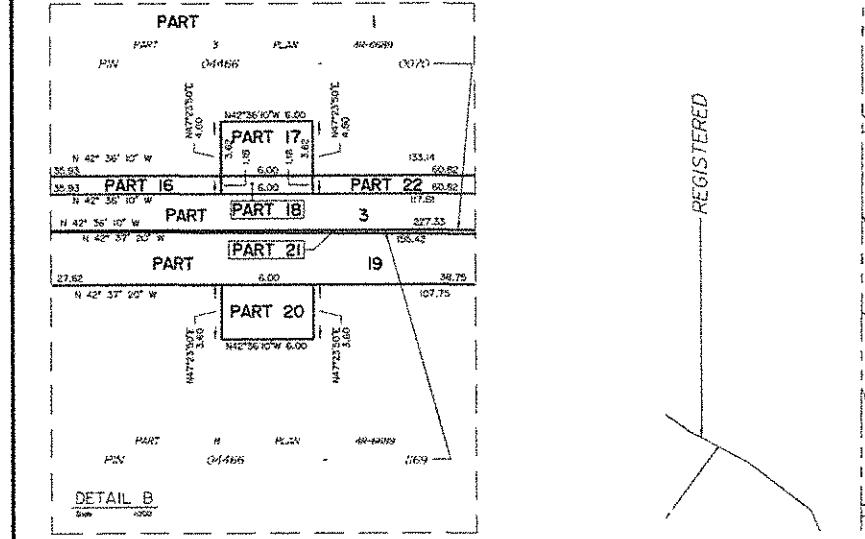
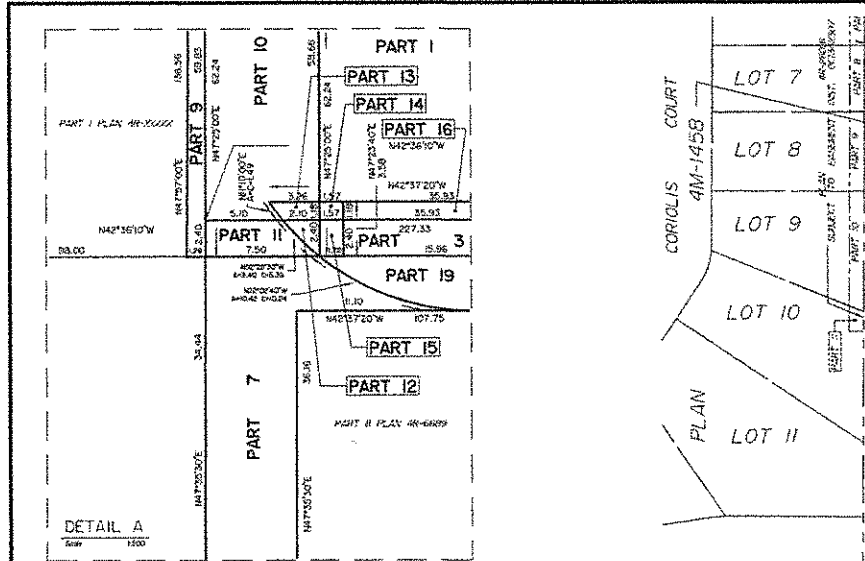
Coordinate values are to urban accuracy in accordance with O. Reg. 216/10.

01919750705 Northing 50108163.00 Easting 309065.84  
01919770223 Northing 5010538.21 Easting 346275.92  
Point A Northing 5010545.83 Easting 350740.53  
Point B Northing 5010037.04 Easting 350644.30

Caution: Coordinates cannot, in themselves, be used to re-establish corners or boundaries shown on this plan.



ANNIS, O'SULLIVAN, VOLLEBEK LTD.  
14 Concession Goulbourn, Suite 500  
Goulbourn, Ont. K7E 1T2  
Phone: (613) 275-6222 Fax: (613) 273-1070  
Email: info@anniso.com



36  
ROAD No. 36  
REGIONAL ROAD  
HAZELDEAN ROAD  
Road Allowance Between Concessions 11 and 12

REGISTERED BLOCK PLAN 1 4M-1432  
PIN 04466 - 0912

PART 2 PLAN 4M-1432 12

REQUIRE THIS PLAN TO BE DEPOSITED UNDER THE LAND TITLES ACT.  
DATE: \_\_\_\_\_  
RECEIVED AND DEPOSITED DATE: \_\_\_\_\_  
PLAN 4R-  
REPRESENTATIVE FOR LAND REGISTRAR FOR THE LAND TITLES DIVISION OF OTTAWA-CARLETON, O. 4.

AREA (Sq.M)	PART	LOT	CONFESSION	PIN
2684.3	1			Part of 04466-0070
15.9	2			Part of 04466-1160
251.0	3			Part of 04466-2070
25.2	4			
289.9	5			Part of 04466-1160
75.2	6			
280.0	7			Part of 04466-1160
66.4	8			
315.5	9			
164.7	10			
14.9	11			
3.1	12			
3.416	13			
1.9	14			
3.8	15			
43.1	16			
21.6	17			
7.2	18			
270.0	19			
21.8	20			
14.7	21			
73.0	22			
7.2	23			
21.8	24			
15.5	25			
86.8	26			
129.3	27			
20.7	28			
142.4	29			
10.0	30			
286.0	31			
37.2	32			
38.9	33			
80.1	34			
80.1	35			

PARTS 1, 3 & 16 (BOTH INCLUSIVE), 22, 23, 24 AND 34 ARE SUBJECT TO EASEMENT REG. 0 AND 21, 4646 & 16240082  
PARTS 2, 25 TO 29 (BOTH INCLUSIVE), 31, 32, 33 AND 35 ARE SUBJECT TO EASEMENT REG. 001353311

**DRAFT PLAN OF SURVEY OF**

**PART OF LOT 27 CONFESSION 12**  
Geographic Township of Goulbourn  
CITY OF OTTAWA  
Surveyed by Annis, O'Sullivan, Vollebek Ltd.

Scale 1 : 500

Metric  
DISTANCES SHOWN ON THE PLAN ARE IN METRES AND CAN BE CONVERTED TO FEET BY DIVIDING BY 0.3048

**Surveyor's Certificate**

- This survey and plan are correct and in accordance with the Survey Act, the Surveyors Act and the Land Titles Act and the regulations made under them.
- The survey was completed on the \_\_\_\_\_ day of \_\_\_\_\_ 2017.

Date: \_\_\_\_\_  
Richard R. Gauthier  
Ontario Land Surveyor

**Notes & Legend**

- Denotes Survey Monument Planted
- SIB - Standard Iron Bar
- SIBB - Short Standard Iron Bar
- IB - Iron Bar
- W - Witness
- (ADG) - Annis, O'Sullivan, Vollebek Ltd.
- Mess. - Measured
- (P1) - Plan 4R-25114
- (P2) - Plan 4R-25271
- (P3) - Plan 4R-6589
- (P4) - Plan 4R-1432

Distances shown on this plan are ground distances and can be converted to grid distances by multiplying by the combined scale factor of 0.999900.

Bearings are grid, derived from CanMet 3.0 Real Time Network GPS observations on reference points A and B, shown herein, having a bearing of 146° 11' 30" E and are referenced to Specified Control Points 0191972025 and 0191972023, NAD 83, Zone 9 (78° 30' West Longitude) NAD 83 (original).

For bearing comparisons, a notation of 0° 20' 30" south-northwest was applied to bearings on Plan (P3).

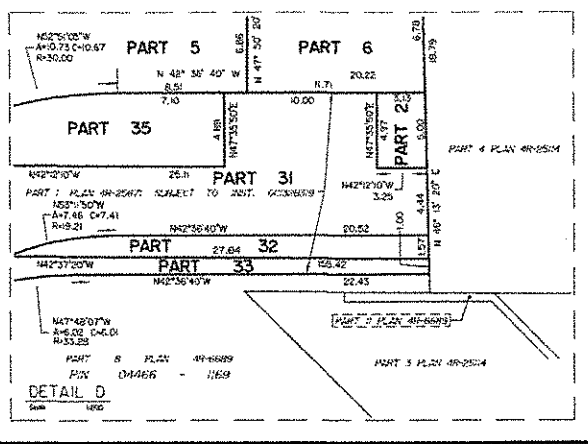
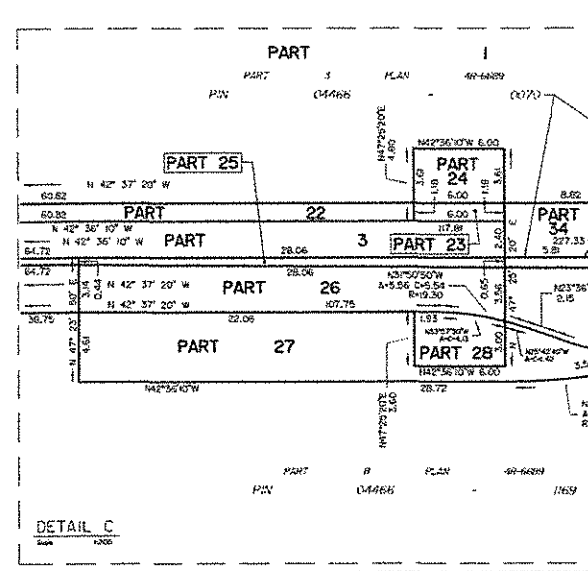
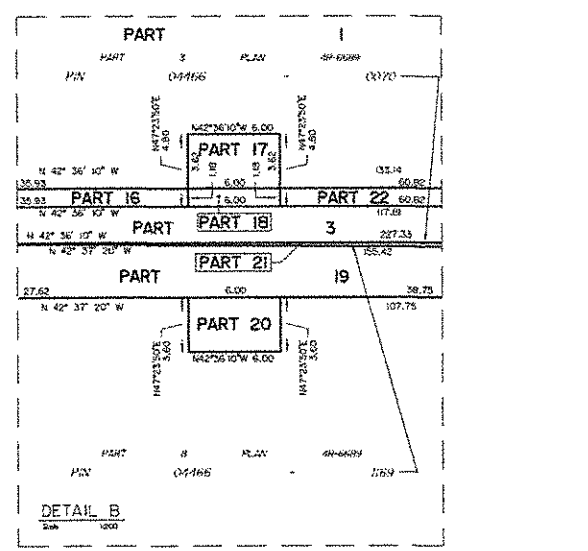
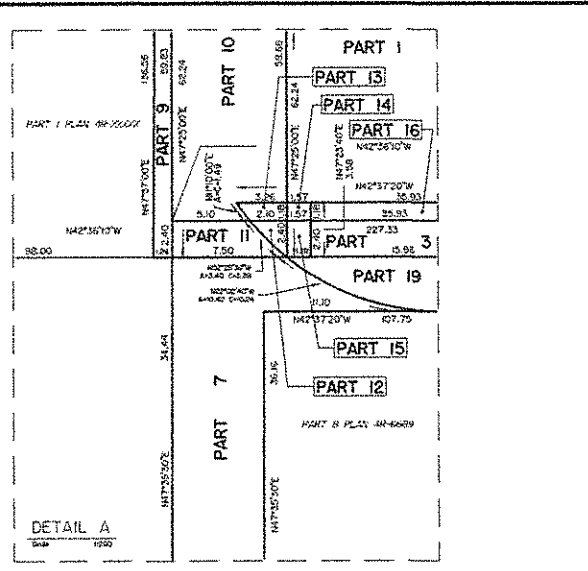
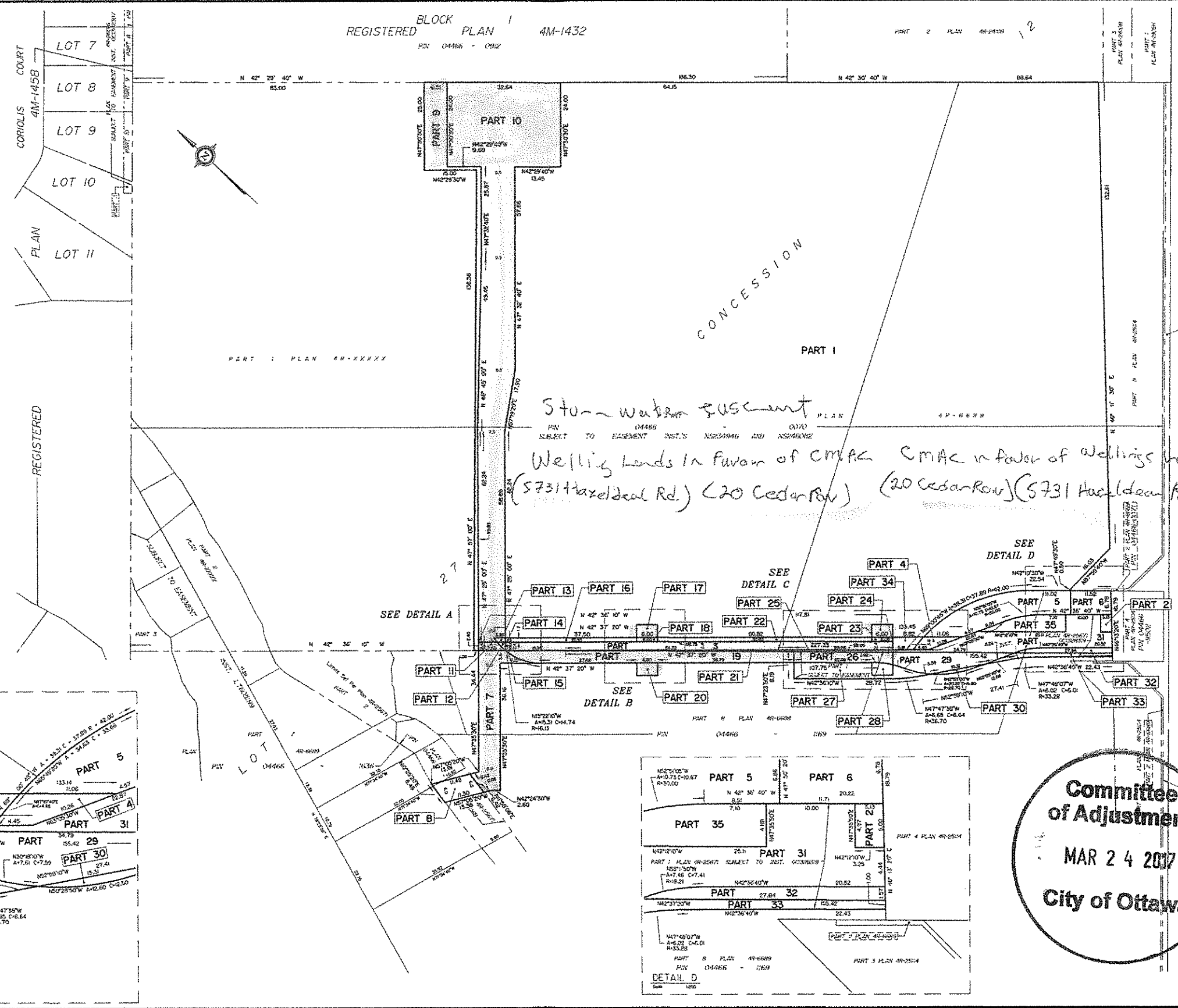
Coordinates are derived from CanMet 3.0 Real Time Network GPS observations, referenced to Specified Control Points 0191972025 and 0191972023, NAD 83, Zone 9 (78° 30' West Longitude) NAD 83 (original).

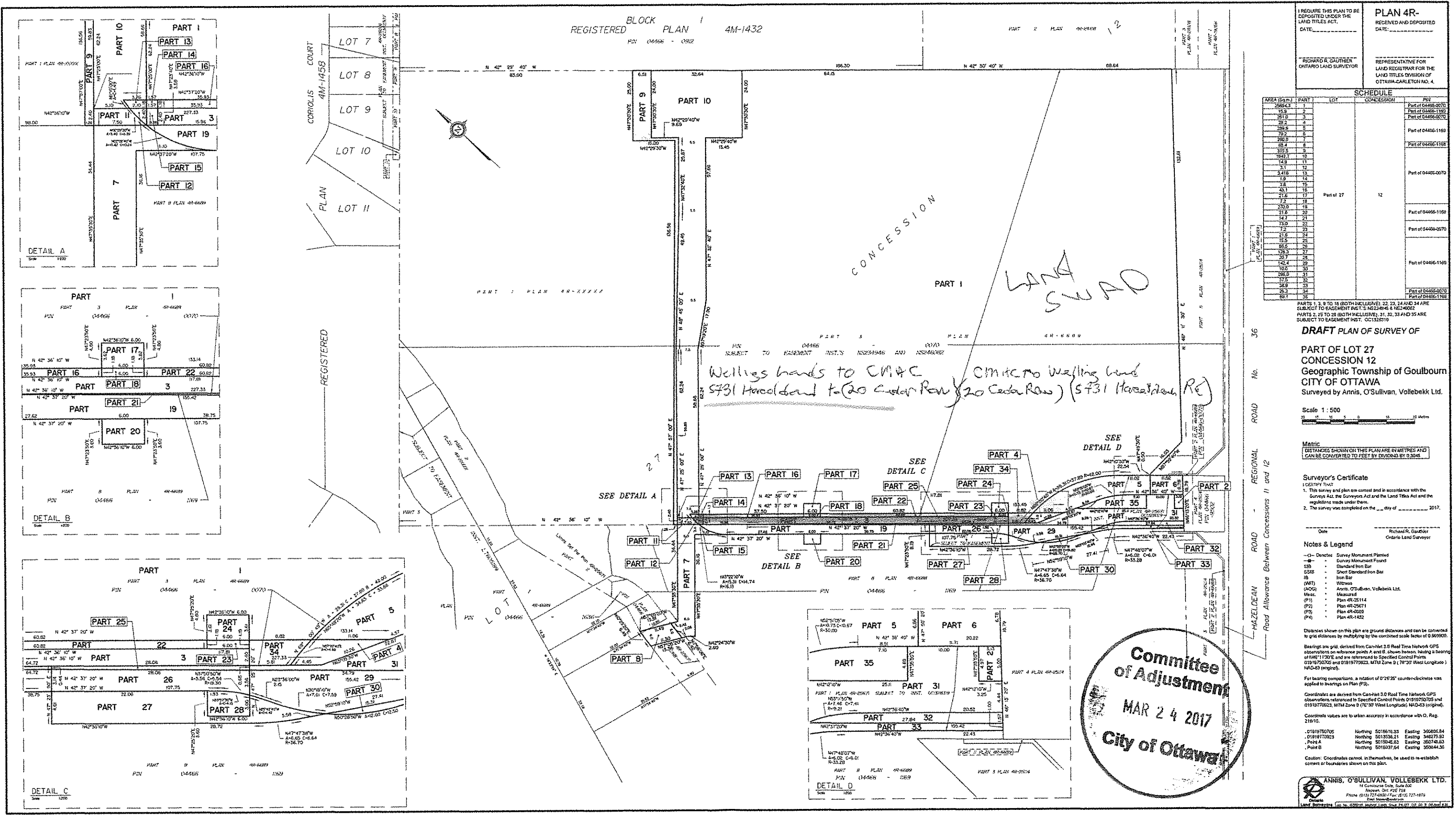
Coordinate values are to urban accuracy in accordance with O. Reg. 216/10.

0191972025 Northing 5015316.53 Easting 369806.64  
0191972023 Northing 5013536.21 Easting 348275.32  
Point A Northing 5015846.53 Easting 350746.53  
Point B Northing 5016031.54 Easting 350844.30

CAUTION: Coordinates carried, in themselves, be used to re-establish corners or boundaries shown on this plan.

ANNIS, O'SULLIVAN, VOLLEBEK LTD.  
14 Concession St., Suite 200  
Ottawa, ON K2E 7G6  
Phone: (613) 727-0850 Fax: (613) 727-1076  
Email: info@anniso.com





REGISTERED BLOCK PLAN 1 4M-1432  
 PLAN 4M-1432  
 PIN 04466 - 0902

REQUIRE THIS PLAN TO BE DEPOSITED UNDER THE LAND TITLES ACT.  
 DATE: \_\_\_\_\_  
 RECEIVED AND DEPOSITED DATE: \_\_\_\_\_  
 REPRESENTATIVE FOR LAND REGISTRY FOR THE LAND TITLES DIVISION OF OTTAWA-CARLETON NO. 4.  
 RICHARD R. GAUTIER  
 ONTARIO LAND SURVEYOR

AREA (sq.m)	PART	LOT	CONCESSION	PIN
2566.43	1			Part of 04466-0070
15.9	2			Part of 04466-1199
251.0	3			Part of 04466-0270
28.2	4			Part of 04466-1199
289.8	5			Part of 04466-0270
29.2	6			Part of 04466-1199
250.0	7			Part of 04466-0270
85.4	8			Part of 04466-1199
312.5	9			Part of 04466-0270
1942.1	10			Part of 04466-0270
14.9	11			Part of 04466-1199
43.1	12			Part of 04466-0270
215.1	13			Part of 04466-1199
7.2	14			Part of 04466-0270
130.0	15			Part of 04466-1199
276.0	16			Part of 04466-0270
21.8	17			Part of 04466-1199
14.7	18			Part of 04466-0270
17.2	19			Part of 04466-1199
15.5	20			Part of 04466-0270
88.2	21			Part of 04466-1199
20.7	22			Part of 04466-0270
142.4	23			Part of 04466-1199
180.0	24			Part of 04466-0270
286.0	25			Part of 04466-1199
37.5	26			Part of 04466-0270
38.9	27			Part of 04466-1199
26.3	28			Part of 04466-0270
89.1	29			Part of 04466-1199

DRAFT PLAN OF SURVEY OF  
 PART OF LOT 27  
 CONCESSION 12  
 Geographic Township of Goulbourn  
 CITY OF OTTAWA  
 Surveyed by Annis, O'Sullivan, Vollebek Ltd.

Scale 1 : 500

Metric  
 DISTANCES SHOWN ON THIS PLAN ARE IN METRES AND CAN BE CONVERTED TO FEET BY DIVIDING BY 3.048

Surveyor's Certificate  
 I CERTIFY THAT  
 1. This survey and plan are correct and in accordance with the Survey Act and the Land Titles Act and the regulations made thereunder.  
 2. The survey was completed on the \_\_\_\_ day of \_\_\_\_\_, 2017.

Date: \_\_\_\_\_  
 Richard R. Gautier  
 Ontario Land Surveyor

- Notes & Legend
- Denticles Survey Monument Planned
  - Survey Monument Found
  - S— Standard Iron Bar
  - SB— Short Standard Iron Bar
  - IB— Iron Bar
  - WB— Wood
  - (M)— Measured
  - (A)— Annis, O'Sullivan, Vollebek Ltd.
  - (P1)— Plan 4R-05114
  - (P2)— Plan 4R-05671
  - (P3)— Plan 4R-0029
  - (P4)— Plan 4R-1432

Distances shown on this plan are ground distances and can be converted to grid distances by multiplying by the combined scale factor of 0.999900.

Bearing and grid derived from CanMet 2.5 Real Time Network GPS observations on reference points A and B shown herein, having a bearing of 118°11'20.0"E and are referred to Specified Control Points 01918750702 and 01918750703 and 01918750702, MTL Zone 9 (76°30' West Longitude) NAD-83 (original).

For bearing comparison, a rotation of 0°25'25" counter-clockwise was applied to bearings on Plan (P3).

Coordinates are derived from CanMet 3.0 Real Time Network GPS observations, referenced to Specified Control Points 01918750703 and 01918750702, MTL Zone 9 (76°30' West Longitude) NAD-83 (original).  
 Coordinate values are to urban accuracy in accordance with O. Reg. 216/10.

Caution: Coordinates control, in the form shown, is used to re-establish correct boundaries shown on this plan.

ANNIS, O'SULLIVAN, VOLLEBEK LTD.  
 11 Concession One, Suite 500  
 Newmarket, Ont. L4Y 1S8  
 Phone (913) 727-0300 / Fax (913) 727-1075  
 Email: annis@anniso.com