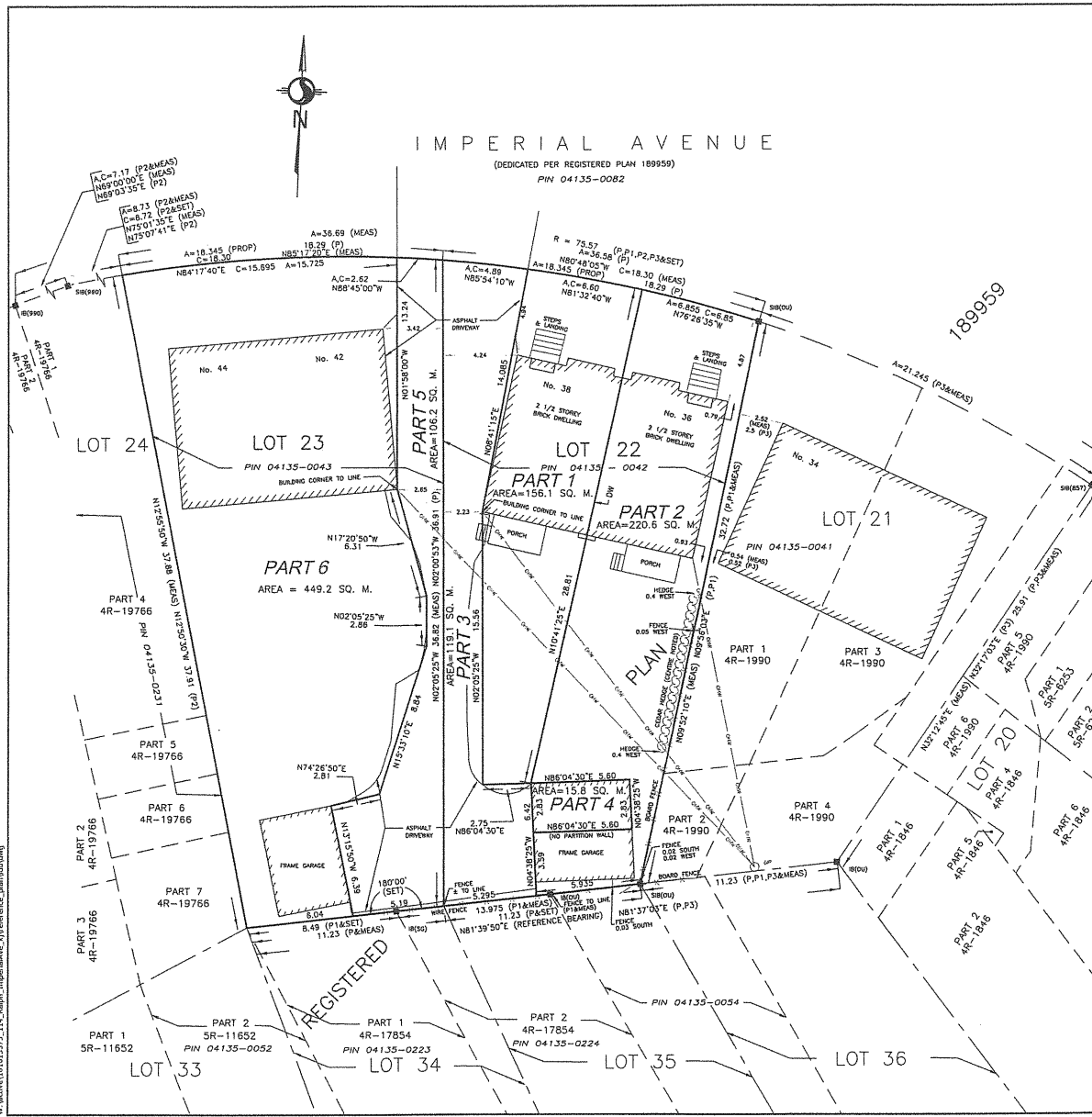


36 Imperial



I REQUIRE THIS PLAN TO BE DEPOSITED UNDER THE LAND TITLES ACT.		PLAN 4R- _____	
_____, 2015		RECEIVED AND DEPOSITED	
BRIAN J. WEBSTER ONTARIO LAND SURVEYOR		DATE: _____	
		REPRESENTATIVE FOR THE LAND REGISTRAR FOR THE LAND TITLES DIVISION OF OTTAWA-CARLETON NO. 4.	
SCHEDULE			
PART	LOT	PLAN	PIN
1			
2	ALL OF 22	189959	ALL OF 04135-0042
3			
4			
5	ALL OF 23	189959	ALL OF 04135-0043
6			

PLAN OF SURVEY of
LOTS 22 & 23
REGISTERED PLAN 189959
CITY OF OTTAWA

Scale 1 : 150

METRIC CONVERSION
 DISTANCES AND COORDINATES SHOWN ON THIS PLAN ARE IN METRES AND CAN BE CONVERTED TO FEET BY DIVIDING BY 0.3048.

GRID SCALE CONVERSION
 DISTANCES ARE GROUND AND CAN BE CONVERTED TO GRID BY MULTIPLYING BY THE COMBINED SCALE FACTOR OF 0.9999942.

BEARING NOTE
 BEARINGS ARE ASTROMONIC AND ARE REFERRED TO THE NORTHERLY LIMITS OF LOTS 24 TO 26, REGISTERED PLAN 189959, AS SHOWN ON PLAN 4R-17854, HAVING A BEARING OF N 81°39'50" E.

OBSERVED REFERENCE POINTS DERIVED FROM GPS OBSERVATIONS USING THE CAN-NET VIRTUAL REFERENCE STATION NETWORK:
 MTM ZONE 9, NAD83 (ORIGINAL).
 COORDINATES TO URBAN ACCURACY PER SEC 14(2) OF O.REG. 216/10

ORP ID	NORTHING	EASTING
(A)	+	+
(B)	+	+

COORDINATES CANNOT, IN THEMSELVES, BE USED TO RE-ESTABLISH CORNERS OR BOUNDARIES SHOWN ON THIS PLAN.

SURVEYOR'S CERTIFICATE
 I CERTIFY THAT:
 1. THIS SURVEY AND PLAN ARE CORRECT AND IN ACCORDANCE WITH THE SURVEYS ACT, THE SURVEYORS ACT AND THE LAND TITLES ACT AND THE REGULATIONS MADE UNDER THEM.
 2. THE SURVEY WAS COMPLETED ON THE DAY OF, 2015.

DATE	BRIAN J. WEBSTER ONTARIO LAND SURVEYOR
LEGEND	
■	FOUND MONUMENTS
□	SET MONUMENTS
IR	IRON BAR
SIB	STANDARD IRON BAR
SSIB	SHORT STANDARD IRON BAR
CI	CONCRETE PIN
ORP	OBSERVED REFERENCE POINT
WIT	WITNESS
PIN	PROPERTY IDENTIFICATION NUMBER
MEAS	MEASURED
PROP	PROPORTIONED
OU	ORIGIN UNKNOWN
SC	STANTEC GEOMATICS LTD.
P1	REGISTERED PLAN 189959
P2	PLAN 4R-17854
P3	PLAN 4R-19766
P4	PLAN 4R-1990
DW	APPROXIMATE CENTRE OF DIVISION WALL
UP	UTILITY POLE OVERHEAD WIRES

Stantec Ontario Land Surveyors
 Canada Land Surveyors
 1331 CLYDE AVENUE, SUITE 400, OTTAWA, ON K2C 3G4
 PHONE (613) 222-4420 FAX (613) 222-2799

DRAWN BY: ME | CHECKED BY: KJ | FIELD: ES | PROJECT No.: 161613373-114
 DRAWING: 161613373-114_36-38 ImperialAve-D4.dwg 3/9/17

W:\survey\161613373_114_36-38 ImperialAve.dwg\reference_solid\drawing