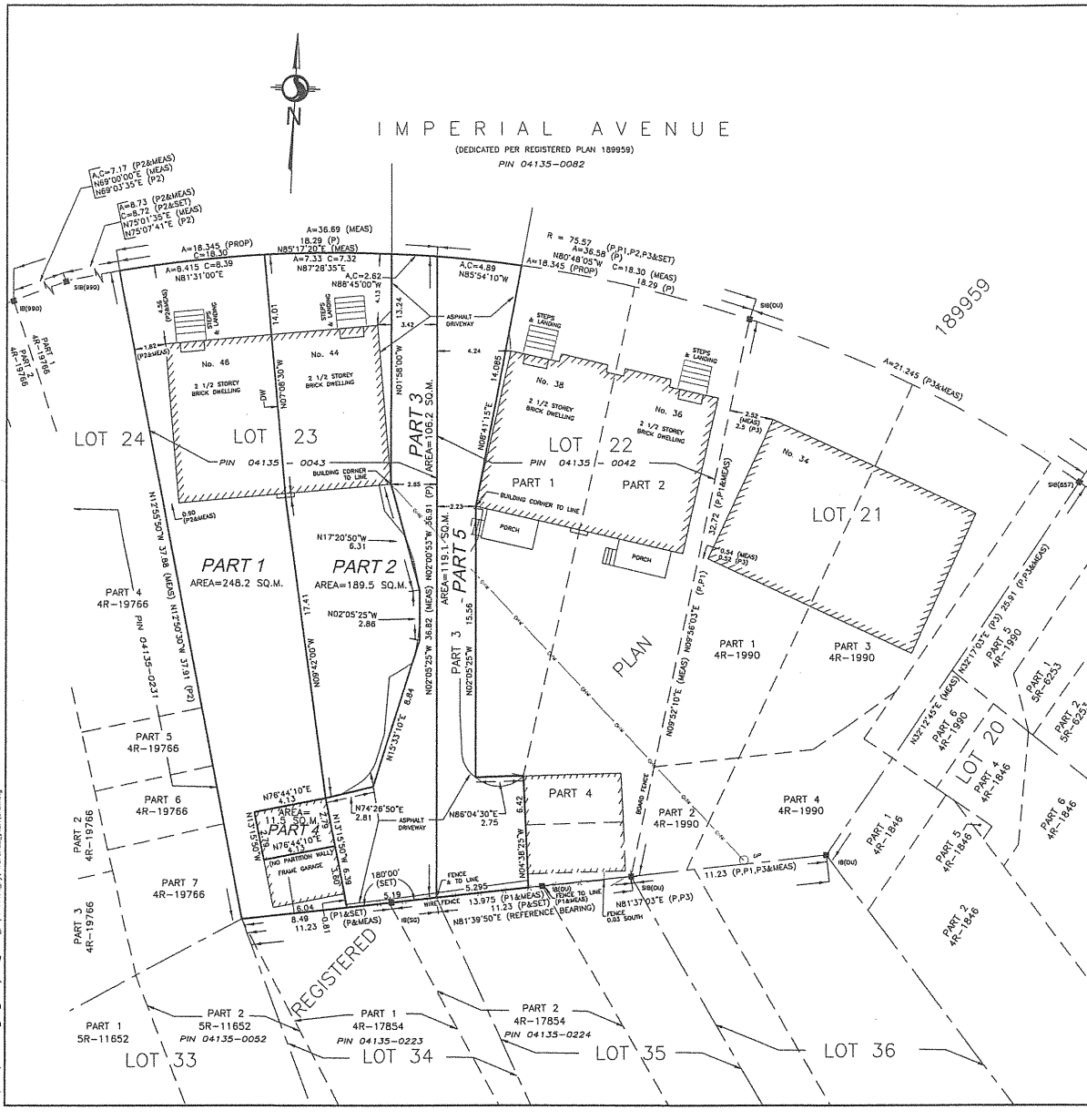


44 IMPERIAL



I REQUIRE THIS PLAN TO BE DEPOSITED UNDER THE LAND TITLES ACT.

PLAN 4R-\_\_\_\_\_ RECEIVED AND DEPOSITED

DATE: \_\_\_\_\_, 2017

BRIAN J. WEBSTER  
ONTARIO LAND SURVEYOR

REPRESENTATIVE FOR THE LAND REGISTRAR FOR THE LAND TITLES DIVISION OF OTTAWA-CARLETON NO. 4.

SCHEDULE			
PART	LOT	PLAN	PIN
1			
2	ALL OF 23	189959	ALL OF 04135-0043
3			
4			
5	PART OF 22	189959	PART OF 04135-0043

**PLAN OF SURVEY OF**  
**LOT 23 & PART OF LOT 22**  
**REGISTERED PLAN 189959**  
**CITY OF OTTAWA**



**METRIC CONVERSION**  
DISTANCES AND COORDINATES SHOWN ON THIS PLAN ARE IN METRES AND CAN BE CONVERTED TO FEET BY DIVIDING BY 0.3048.

**GRID SCALE CONVERSION**  
DISTANCES ARE GROUND AND CAN BE CONVERTED TO GRID BY MULTIPLYING BY THE COMBINED SCALE FACTOR OF 0.999942.

**BEARING NOTE**  
BEARINGS ARE ASTROMONIC AND ARE REFERRED TO THE NORTHERLY LIMITS OF LOTS 34 TO 36, REGISTERED PLAN 189959, AS SHOWN ON PLAN 4R-17854, HAVING A BEARING OF N 81°39'50" E.

OBSERVED REFERENCE POINTS DERIVED FROM GPS OBSERVATIONS USING THE CAN-NET VIRTUAL REFERENCE STATION NETWORK:

NTH ZONE 9, NAD83 (ORIGINAL).

COORDINATES TO URBAN ACCURACY PER SEC 14(3) OF O. REG. 216/10

ORP ID	NORTHING	EASTING
(A)	+	+
(B)	+	+

COORDINATES CANNOT, IN THEMSELVES, BE USED TO RE-ESTABLISH CORNERS OR BOUNDARIES SHOWN ON THIS PLAN.

**SURVEYOR'S CERTIFICATE**

I CERTIFY THAT :

- THIS SURVEY AND PLAN ARE CORRECT AND IN ACCORDANCE WITH THE SURVEYS ACT, THE SURVEYORS ACT AND THE LAND TITLES ACT AND THE REGULATIONS MADE UNDER THEM.
- THE SURVEY WAS COMPLETED ON THE DAY OF , 2017.

DATE	BRIAN J. WEBSTER
	ONTARIO LAND SURVEYOR

LEGEND	DENOTES	FOUND MONUMENTS
□		SET MONUMENTS
▣		IRON BAR
▤		STANDARD IRON BAR
▥		SHORT STANDARD IRON BAR
▦		CONCRETE PIN
○		OBSERVED REFERENCE POINT
●		WITNESS
+		PROPERTY IDENTIFICATION NUMBER
MEAS		MEASURED
PROF		PROPORTIONED
OU		ORIGIN UNKNOWN
SC		STANTEC GEOMATICS LTD.
P		REGISTERED PLAN 189959
P1		PLAN 4R-17854
P2		PLAN 4R-19766
P3		PLAN 4R-1990
DW		APPROXIMATE CENTRE OF DIVISION WALL
UP		UTILITY POLE
OW		OVERHEAD WIRES

**Stantec** Ontario Land Surveyors  
Canada Land Surveyors  
1331 CLYDE AVENUE, SUITE 406, OTTAWA, ON, K2C 3G4  
PHONE (613) 732-4420 FAX (613) 732-3799  
stantec.com

DRAWN BY: ME	CHECKED BY: -	PH: KJ	FIELD: -	PROJECT No.: 161613454-114
DRAWING: 161613454-114_03_c3d.dwg				March 9, 2017

W:\MHW\161613454\_114\_Land\mhw\_114\_46\_imperialave\_Metricance\_plan.dwg