

PLAN 4R-
RECEIVED AND DEPOSITED
DATE: _____

EDWARD J. CARCATER
CHARTERED LAND SURVEYOR
REPRESENTATIVE FOR THE
LAND TITLES DIVISION OF
OTTAWA-CARLETON NO. 4.

SCHEDULE	
LOT	CONCESSION
1	9

**DRAFT PLAN OF SURVEY OF
PART OF LOT 9
CONCESSION 6
Geographic Township of Goulbourn
CITY OF OTTAWA**
Surveyed by Annis, O'Sullivan, Vollbrekk Ltd.
Scale 1:1000

Metric
DISTANCES AND COORDINATES SHOWN ON THIS PLAN
ARE IN METRES AND CAN BE CONVERTED TO FEET BY
DIVIDING BY 0.3048.

Surveyor's Certificate
I, the undersigned, being a duly qualified and licensed Surveyor, do hereby certify that:
1. This survey and plan are correct and in accordance with the Surveyors Act, the Surveyors Regulations and the Land Titles Act and the regulations made under them.
2. The survey was completed on the _____ day of _____, 2017.

Date: _____
Edward J. Carcater
Chartered Land Surveyor

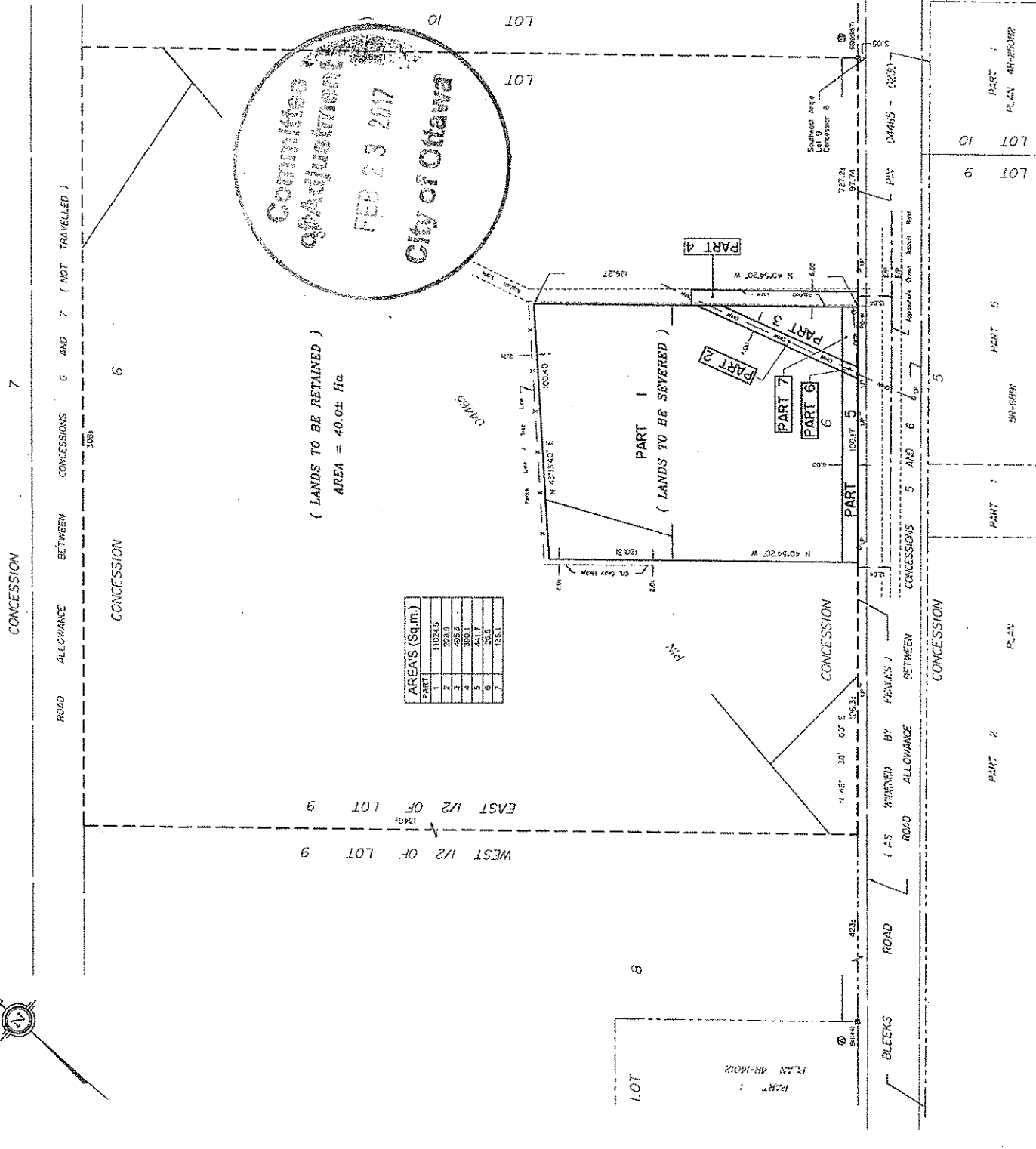
- Notes & Legend**
- Survey Monument Planted
 - Standard Iron Bar
 - Short Standard Iron Bar
 - Iron Bar
 - Wood
 - Aluminum
 - Meas.
 - PT
 - CP
 - EP
 - Overhead Wire

Distances shown on this plan are metric distances and can be converted to feet by multiplying by the combined scale factor of 0.69520.
Bearings are given from the True North Grid (MAGNETIC NORTH) and are in degrees, minutes and seconds. Bearings are given from the True North Grid (MAGNETIC NORTH) and are in degrees, minutes and seconds. Bearings are given from the True North Grid (MAGNETIC NORTH) and are in degrees, minutes and seconds.

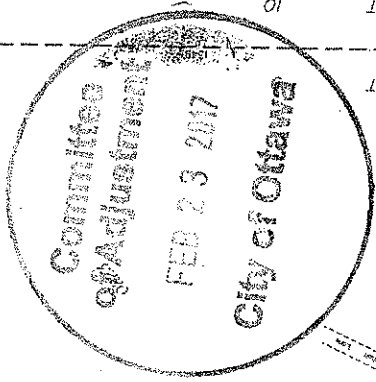
Coordinates are derived from Can-Mat 2011 Real Time Network GPS
0191877023 NAD-83 (original)
0191877023 NAD-83 (original)
0191877023 NAD-83 (original)

Caution: Coordinates cannot, in themselves, be used to re-establish corners or boundaries shown on the plan.

ANNIS, O'SULLIVAN, VOLLEBEKK LTD.
14 Clarence Gate, Suite 200
Ottawa, Ontario
Phone: (613) 737-8827 Fax: (613) 737-1079
www.aosullivan.com



PART	AREAS (Sqm.)
1	11024.5
2	228.9
3	495.4
4	380.1
5	247.7
6	156.3



(LANDS TO BE RETAINED)
AREA = 40.0± Hc

CONCESSION

ROAD ALLOWANCE BETWEEN CONCESSIONS 6 AND 7 (NOT TRAVELLED)

CONCESSION

CONCESSION

ROAD ALLOWANCE BETWEEN CONCESSIONS 5 AND 6

CONCESSION

PART 1

PART 2

PART 3

PART 4

PART 5

PART 6

PART 7

PART 8

PART 9

PART 10

PART 11

PART 12

PART 13

PART 14

PART 15

PART 16

PART 17

PART 18

PART 19

PART 20

PART 21

PART 22

PART 23

PART 24

PART 25

PART 26

PART 27

PART 28

PART 29

PART 30

PART 31

PART 32

PART 33

PART 34

PART 35

PART 36

PART 37

PART 38

PART 39

PART 40

PART 41

PART 42

PART 43

PART 44

PART 45

PART 46

PART 47

PART 48

PART 49

PART 50

PART 51

PART 52

PART 53

PART 54

PART 55

PART 56

PART 57

PART 58

PART 59

PART 60

PART 61

PART 62

PART 63

PART 64

PART 65

PART 66

PART 67

PART 68

PART 69

PART 70

PART 71

PART 72

PART 73

PART 74

PART 75

PART 76

PART 77

PART 78

PART 79

PART 80

PART 81

PART 82

PART 83

PART 84

PART 85

PART 86

PART 87

PART 88

PART 89

PART 90

PART 91

PART 92

PART 93

PART 94

PART 95

PART 96

PART 97

PART 98

PART 99

PART 100

PART 101

PART 102

PART 103

PART 104

PART 105

PART 106

PART 107

PART 108

PART 109

PART 110

PART 111

PART 112

PART 113

PART 114

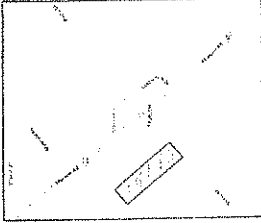
PART 115

PART 116

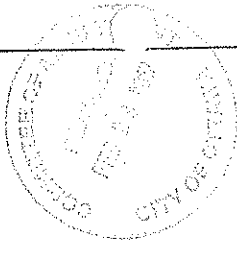
PART 117

PART 118

NO.	DATE	BY	DESCRIPTION
1	01/15/00
2	02/15/00
3	03/15/00
4	04/15/00
5	05/15/00
6	06/15/00
7	07/15/00
8	08/15/00
9	09/15/00
10	10/15/00
11	11/15/00
12	12/15/00



LOCATION PLAN
N.T.S.



- LEGEND
- ▲ EXISTING
- EXISTING
- EXISTING
- ▨ EXISTING
- ▩ EXISTING
- ▧ EXISTING
- ▦ EXISTING
- ▥ EXISTING
- ▤ EXISTING
- ▣ EXISTING
- ▢ EXISTING
- EXISTING
- EXISTING
- ▟ EXISTING
- ▞ EXISTING
- ▝ EXISTING
- ▜ EXISTING
- ▛ EXISTING
- ▚ EXISTING
- ▙ EXISTING
- ▘ EXISTING
- ▗ EXISTING
- ▖ EXISTING
- ▕ EXISTING
- ▔ EXISTING
- ▓ EXISTING
- ▒ EXISTING
- ░ EXISTING
- ▐ EXISTING
- ▏ EXISTING
- ▍ EXISTING
- ▌ EXISTING
- ▋ EXISTING
- ▊ EXISTING
- ▉ EXISTING
- █ EXISTING
- ▇ EXISTING
- ▆ EXISTING
- ▅ EXISTING
- ▄ EXISTING
- ▃ EXISTING
- ▂ EXISTING
- ▁ EXISTING
- ▀ EXISTING
- ▄ EXISTING
- ▃ EXISTING
- ▂ EXISTING
- ▁ EXISTING
- ▀ EXISTING
- ▄ EXISTING
- ▃ EXISTING
- ▂ EXISTING
- ▁ EXISTING
- ▀ EXISTING

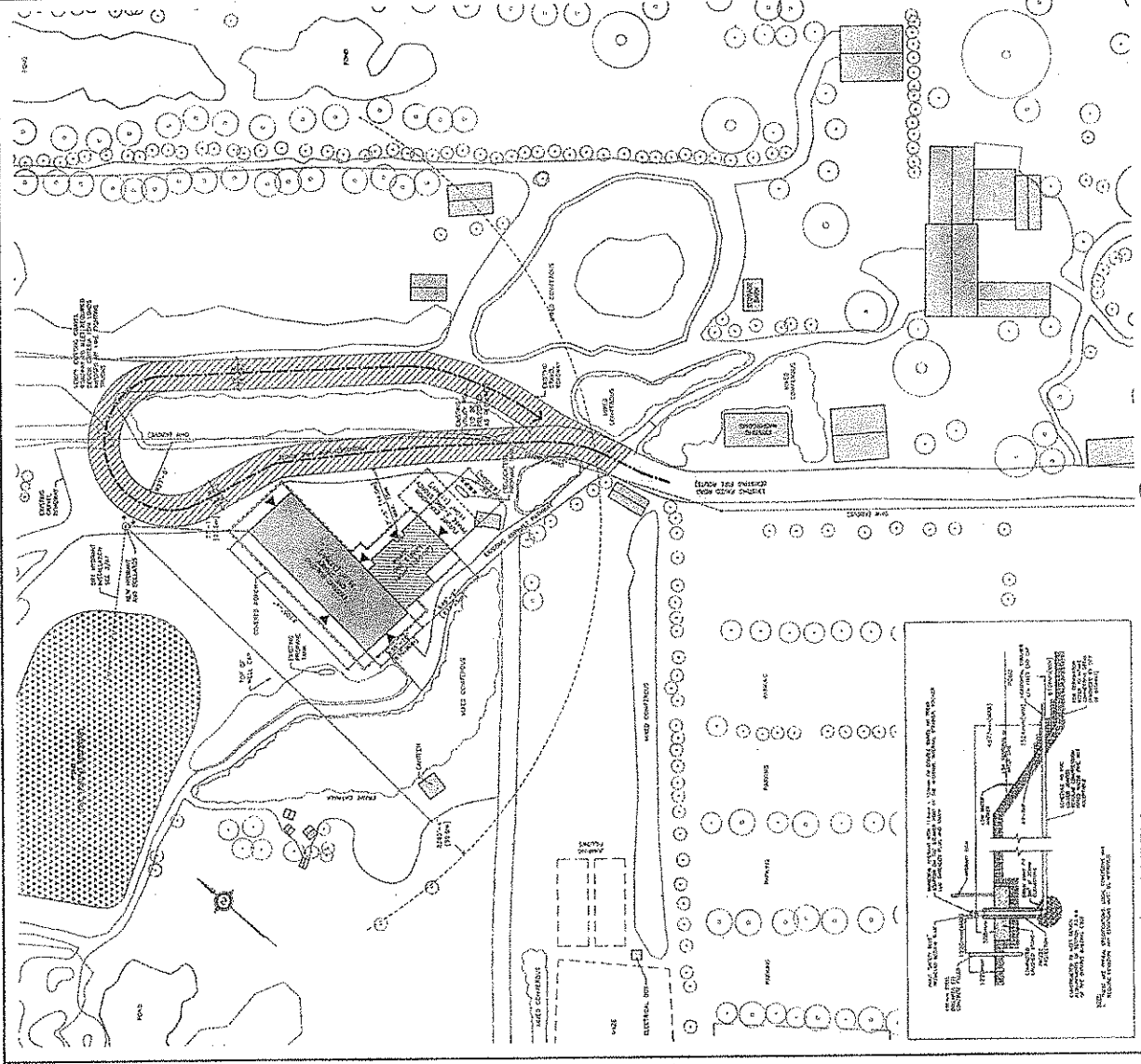


VanDerberg & Wilcoxon
ARCHITECTS

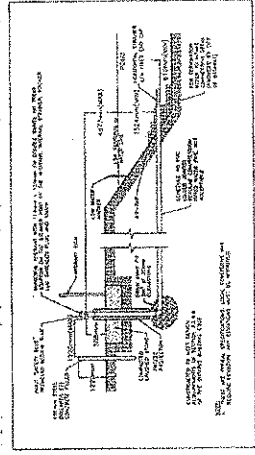
SAUNDERS GROUP ARCHITECTS

SITE PLAN

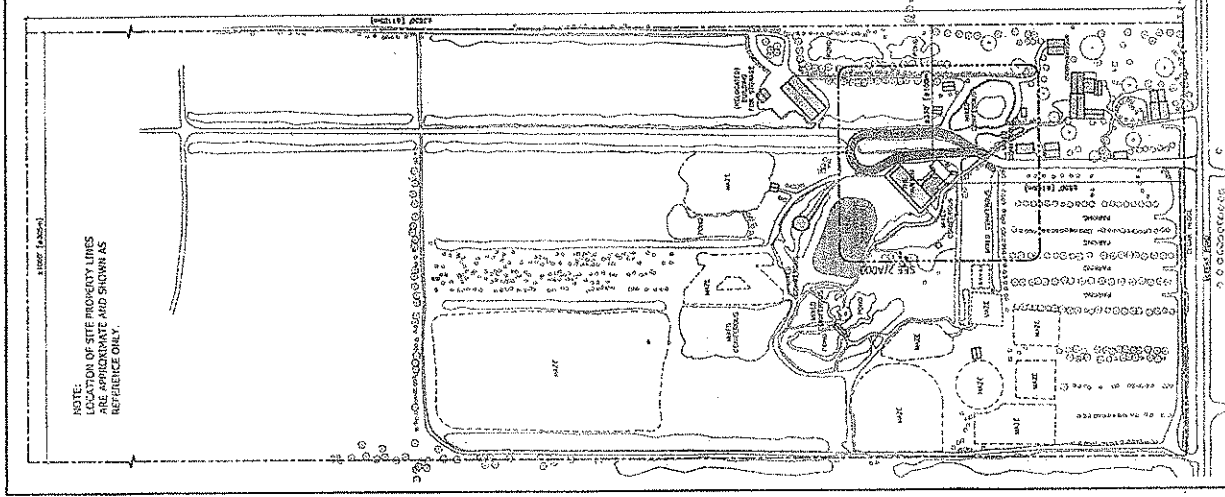
A000



2. SITE PLAN
A000



1. TYPICAL FILL STATIONS
A000



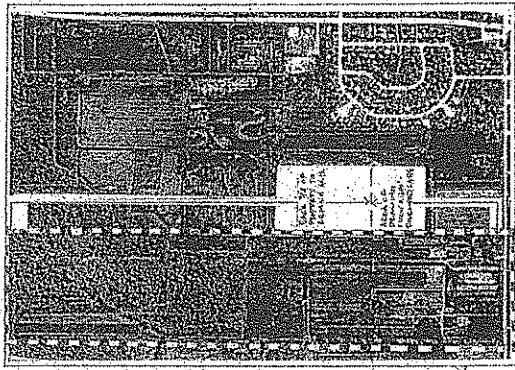
3. OVERALL SITE PLAN
A000

NOTE: DIMENSIONS OF SITE PROPERTY LINES ARE APPROXIMATE AND SHOWN AS REFERENCE ONLY.



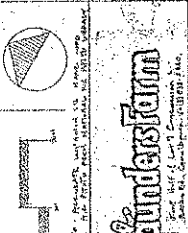
030200-018

APPROVED
DATE: 10/17/77
BY: [Signature]
FOR: [Signature]
PROJECT: [Signature]

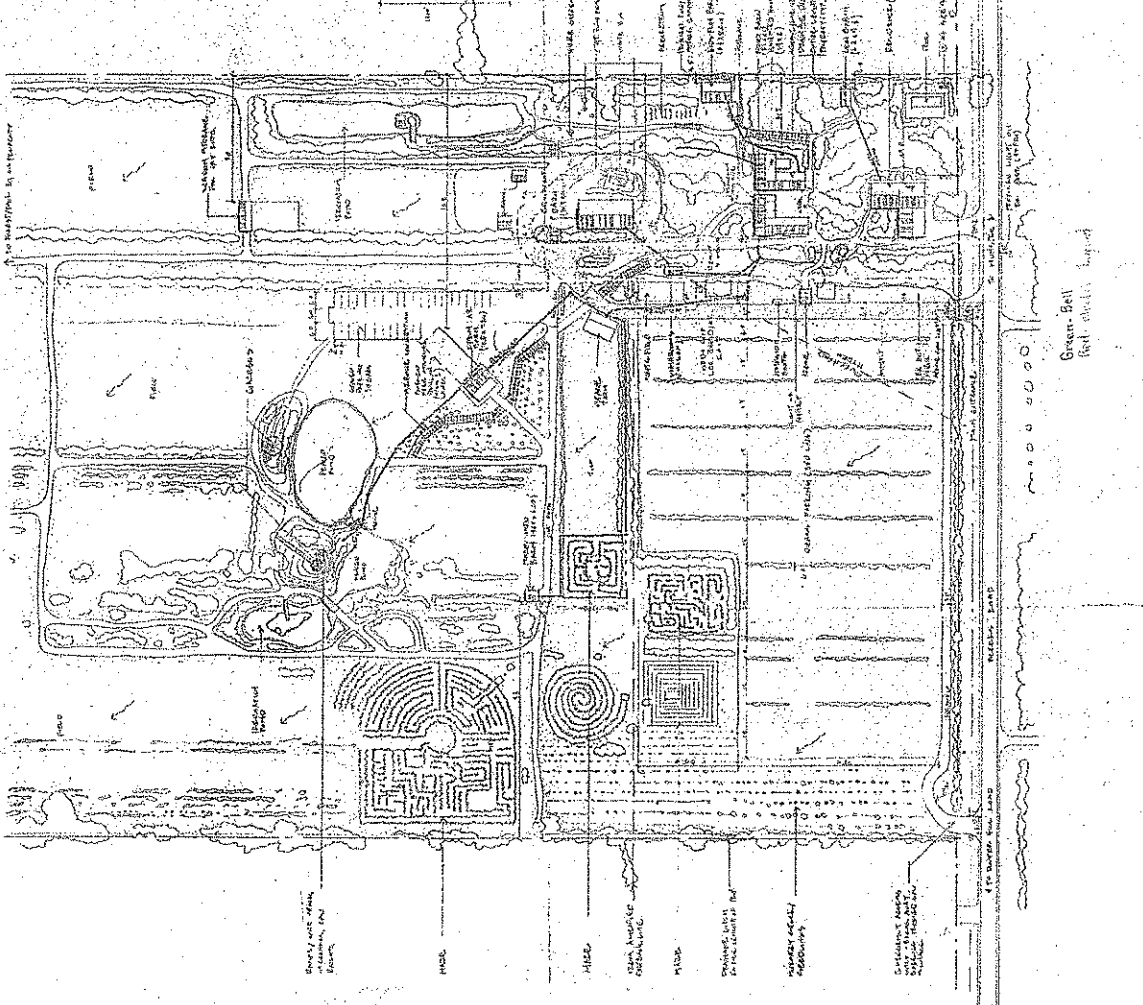


The Saunders Farm
East River Road, Westport, Maryland
East River Road, Westport, Maryland

Site Plan
Scale: 1" = 100'
Date: 1/17/60
Author: Saunders
Client: GVA



NO.	DATE	DESCRIPTION
1	1/17/60	Original Site Plan
2	1/17/60	Revised Site Plan
3	1/17/60	Revised Site Plan
4	1/17/60	Revised Site Plan
5	1/17/60	Revised Site Plan
6	1/17/60	Revised Site Plan
7	1/17/60	Revised Site Plan
8	1/17/60	Revised Site Plan
9	1/17/60	Revised Site Plan
10	1/17/60	Revised Site Plan
11	1/17/60	Revised Site Plan
12	1/17/60	Revised Site Plan
13	1/17/60	Revised Site Plan
14	1/17/60	Revised Site Plan
15	1/17/60	Revised Site Plan
16	1/17/60	Revised Site Plan
17	1/17/60	Revised Site Plan
18	1/17/60	Revised Site Plan
19	1/17/60	Revised Site Plan
20	1/17/60	Revised Site Plan
21	1/17/60	Revised Site Plan
22	1/17/60	Revised Site Plan
23	1/17/60	Revised Site Plan
24	1/17/60	Revised Site Plan
25	1/17/60	Revised Site Plan
26	1/17/60	Revised Site Plan
27	1/17/60	Revised Site Plan
28	1/17/60	Revised Site Plan
29	1/17/60	Revised Site Plan
30	1/17/60	Revised Site Plan
31	1/17/60	Revised Site Plan
32	1/17/60	Revised Site Plan
33	1/17/60	Revised Site Plan
34	1/17/60	Revised Site Plan
35	1/17/60	Revised Site Plan
36	1/17/60	Revised Site Plan
37	1/17/60	Revised Site Plan
38	1/17/60	Revised Site Plan
39	1/17/60	Revised Site Plan
40	1/17/60	Revised Site Plan
41	1/17/60	Revised Site Plan
42	1/17/60	Revised Site Plan
43	1/17/60	Revised Site Plan
44	1/17/60	Revised Site Plan
45	1/17/60	Revised Site Plan
46	1/17/60	Revised Site Plan
47	1/17/60	Revised Site Plan
48	1/17/60	Revised Site Plan
49	1/17/60	Revised Site Plan
50	1/17/60	Revised Site Plan



Scale: 1" = 100'
Date: 1/17/60
Author: Saunders
Client: GVA