

Distances shown on this plan are ground distances and can be converted to grid distances by multiplying by the combined scale factor of 0.999985. Bearings are grid, derived from Can-Net 3.0 Real Time Network GPS observations on reference points A and B, shown hereon, having a bearing of N8°21'50"W and are referenced to Specified Control Points 01919791338 and 01919871649, MTM Zone 9 (76°30' West Longitude) NAD-83 (original).

Coordinates are derived from Can-Net 3.0 Real Time Network GPS observations referenced to Specified Control Points 01919791338 and 01919871649, MTM Zone 9 (76°30' West Longitude) NAD-83 (original). Coordinate values are to urban accuracy in accordance with O. Reg. 216/10.

. 01919760726 Northing 5009740.96 Easting 383093.28
 . 00819900461 Northing 5007460.66 Easting 432311.81
 . Point A Northing 5041202.95 Easting 393447.73
 . Point B Northing 5041284.09 Easting 393435.80

Caution: Coordinates cannot, in themselves, be used to re-establish corners or boundaries shown on this plan.

SCHEDULE				
AREA M ²	PART	LOT	PLAN	PIN
7912.6	1	ALL OF		ALL OF
111.5	2	30	50M-33	14533-0192
8250.5	3			

Part 2 is subject to easement RLT2291.

I REQUIRE THIS PLAN TO BE DEPOSITED UNDER THE LAND TITLES ACT.

DATE: _____

PLAN 4R-

RECEIVED AND DEPOSITED

DATE: _____

EDWARD M. LANCASTER
ONTARIO LAND SURVEYOR

REPRESENTATIVE FOR
LAND REGISTRAR FOR THE
LAND TITLES DIVISION OF
OTTAWA-CARLETON NO. 4.

**DRAFT PLAN OF SURVEY OF
LOT 30
REGISTERED PLAN 50M-33
CITY OF OTTAWA**
Surveyed by Annis, O'Sullivan, Vollebakk Ltd.

Scale 1 : 750



Metric

DISTANCES AND COORDINATES SHOWN ON THIS PLAN ARE IN METRES AND CAN BE CONVERTED TO FEET BY DIVIDING BY 0.3048.

Surveyor's Certificate

I CERTIFY THAT :

1. This survey and plan are correct and in accordance with the Surveys Act, the Surveyors Act and the Land Titles Act and the regulations made under them.
2. The survey was completed on the ___ day of _____, 2017.

Date

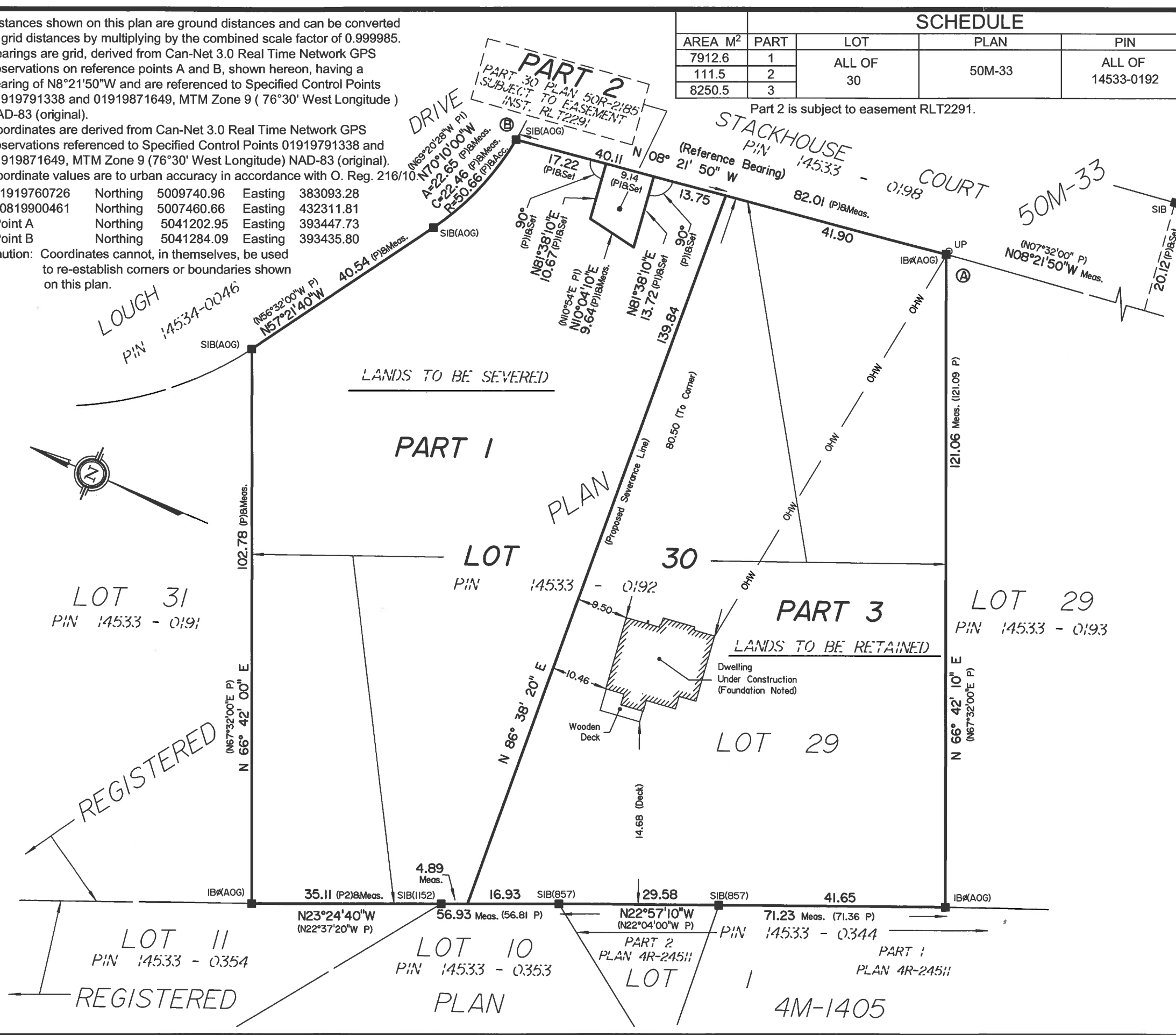
EDWARD M. LANCASTER
Ontario Land Surveyor

Notes & Legend

- Denotes Survey Monument Planted
- " Survey Monument Found
- SIB " Standard Iron Bar
- SSIB " Short Standard Iron Bar
- IB " Iron Bar
- IBØ " Round Iron Bar
- (WIT) " Witness
- (AOG) " Annis, O'Sullivan, Vollebakk Ltd.
- Meas. " Measured
- (P) " Registered Plan 50M-33
- (P1) " Plan 50R-2185
- UP " Utility Pole

ANNIS, O'SULLIVAN, VOLLEBEKK LTD.
 14 Concourse Gate, Suite 500
 Nepean, Ont. K2E 7S6
 Phone: (613) 727-0850 / Fax: (613) 727-1079
 Email: Nepean@aovltd.com

Ontario Land Surveyors Job No. 19116-17 eml



Y:\2017\19116-17\Drawings\19116-17.dwg 03/02/2017 10:52:52 AM